

Acute Kidney and Ureteric Stone - Ultrasound

Information for
patients



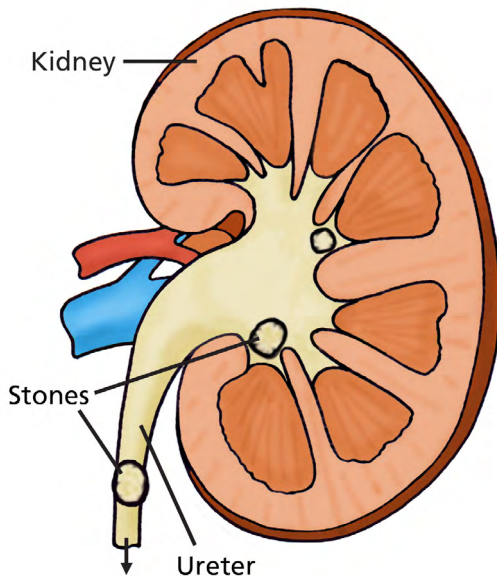
This leaflet has been designed to provide information on suspected ureteric stones pathway at Leeds Teaching Hospitals.

Kidney stones are common and often very painful, but many people recover without needing surgery.

What is going to happen

The symptoms that brought you to hospital might be caused by a ureteric stone. This is a stone in the pipe that drains urine from the kidney to the bladder.

- It is safe for you to go home for now.
- You need to come back for a scan to check if you do have a stone.



Ultrasound

- You will have an ultrasound scan to check for stones.
- You may need a CT scan later but ultrasound is a better test for you to start off with.
- Ultrasound is the type of scan we use for pregnant people to look at their babies. It uses jelly on your skin and a small wand which presses on your skin to get a picture of the kidney. It can sometimes tickle and the jelly can be cold.
- Your Ultrasound Scan will be performed in the Ambulatory Surgical Centre in Chancellor Wing at St James's University Hospital.

Your scan

The date and time of your scan is:

Date:

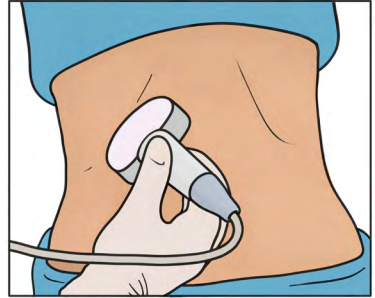
Time:

Location

- The Ambulatory Surgical Centre is in Chancellor Wing, Level 2 at St James's University Hospital, Beckett Street, Leeds, LS9 7TF.
- If you come in via the entrance for A and E it is sign posted from there.

After your scan

- After your scan you can go home.
- A doctor will call you to speak to you about what the scan shows within two working days.
- Please answer calls from the telephone numbers:
0113 392 9999 or **0113 206 9999**.



What do you need to know

Pain

- We recommend that you take regular Paracetamol and Ibuprofen.
- You can get these at pharmacies, supermarkets and convenience stores.
- We will also give you pain killers to go home with.
- The doctor who sees you will explain how to use these.



Emergencies

If you start having the below symptoms when you are at home, please come to the **Surgical Admissions Unit at St James's University Hospital** to be checked by a clinician:

- High temperature (over 38 degrees).
- You feel very hot and have shaking that you can't stop.
- Very bad pain which does not go away with the pain killers we give you.
- You stop passing urine.



Surgical Assessment Unit

- The Surgical Assessment Unit is in Chancellor Wing Level 2 at St James's University Hospital, Beckett Street, Leeds, LS9 7TF.
- If you come in via the entrance for A and E it is sign posted from there.

What might happen

- Some stones don't need treatment and come out on their own.
- Some stones might need help or treatment to come out.
- The doctor that calls you will explain what they think is likely to happen with your stone.
- Information on the two most common treatments can be found at the links on page six. You may want to look at this if your doctor talks to you about this treatment.

Shock waves or ESWL:

Please scan or click the QR code or visit:

[www.baus.org.uk/ userfiles/pages/files /Patients/Leaflets/ESWL.pdf](http://www.baus.org.uk/userfiles/pages/files/Patients/Leaflets/ESWL.pdf)



An operation with a telescope or ureteroscopy:

Please scan or click the QR code or visit:

[www.baus.org.uk/ userfiles/pages/files/Patients/ Leaflets/Ureteroscopy%20for%20stone.pdf](http://www.baus.org.uk/userfiles/pages/files/Patients/Leaflets/Ureteroscopy%20for%20stone.pdf)



Contact us

- If you have a problem or any questions, please contact us via telephone on: **0113 206 5965** (Monday to Friday 08:00 - 16:00 excluding bank holidays).



What did you think of your care?

Visit: www.leedsth.nhs.uk/patients/support/feedback-complaints/friends-family-test/

Scan or click the QR code - Your views matter

© The Leeds Teaching Hospitals NHS Trust • 1st Edition Version 1
Developed by: Lizzie Dharocca - Clinical Fellow Urology
Produced by: Medical Illustration Services • MID code: 20260413_001/MH

LN006218
Publication date
06/2026
Review date
06/2029