

AI-supported same day prostate MRI and biopsy pathway

Information for patients



This leaflet aims to explain the next steps in the suspected prostate cancer pathway, specifically in relation to the AI-supported same day MRI and biopsy service.

What to expect from your appointment

This leaflet explains why you have been invited, how this appointment fits into your care, and what may happen on the day.

It is normal to feel worried at this stage. This appointment is about **understanding what is going on** and deciding **what, if anything, needs to happen next**.

Why you have been invited

You have been offered this appointment because:

- your PSA blood test was higher than expected, or
- you have symptoms that need further checking.

For most men, this does **not** mean cancer.

This clinic brings tests and specialist review together so decisions can be made without long waits between appointments.

This information is being shared before your appointment so you have time to understand what may happen and prepare any questions.

What will happen on the day

You may be at the clinic for several hours, with some waiting time. During the day, you will have:

- An MRI scan of your prostate.
- Specialist review of the scan.
- A conversation about what the scan shows.
- A discussion about what will happen next.

You are welcome to bring someone with you for support.

Why am I having a prostate MRI scan?

You will be having an MRI scan of your **prostate**. The MRI scan takes detailed pictures of the prostate, a small gland in men, just below the bladder.

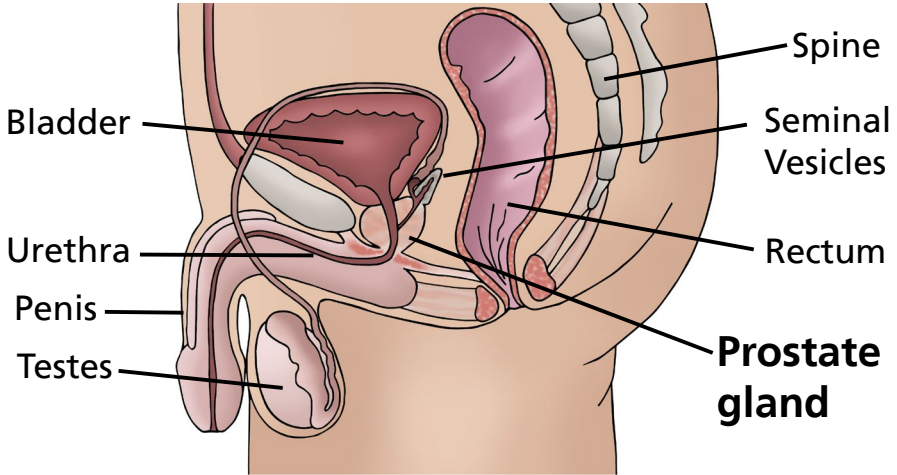
Many people feel anxious about MRI scans. This is common. Staff will explain what to expect and you can ask questions at any point. Please let the team know if you feel claustrophobic or worried, they are used to helping with this.

The scan helps us look for any **signs of prostate cancer** or other problems.

This leaflet explains how your scan is reviewed, how Lucida Pi™ supports us in looking at your scan images, and what may happen next.

The prostate is a gland around the size of the walnut that sits beneath the bladder.

Prostate and pelvic anatomy



How your scan is reviewed

At our hospital we use a computer tool called *Lucida Pi* to help us look at prostate MRI scans.

- It is a type of **artificial intelligence (AI)**.
- It looks at the pictures from your scan and **highlights areas that may look unusual**.
- It is used to **support, not replace**, the radiologist (a specialist doctor who reads MRI scans).

What happens after the scan?

1. Lucida Pi checks your scan

- The computer marks any areas that it thinks may need a closer look.

2. The radiologist reviews everything

- They look carefully at your scan, the Lucida Pi results, and your PSA result.
- They then decide if your risk of prostate cancer seems higher or low at this time.

Possible outcomes

1. If your risk of prostate cancer is higher

If the radiologist thinks there is a higher chance of prostate cancer, we may recommend a prostate biopsy. A biopsy means:

- A thin needle is used to take small samples of tissue from your prostate.
- These samples are examined under a microscope to check for cancer.

Before the biopsy you will have the chance to:

- Hear why a biopsy is being recommended.
- Ask questions.
- Talk about the benefits and risks before you decide what to do.

If you are attending a one-stop clinic, a biopsy may be offered on the same day. This can mean spending most of the day in hospital.

2. If your risk of prostate cancer is low

If your scan does not show any worrying changes and your overall risk is low, we will not recommend a biopsy at this stage.

You will receive clear advice about future PSA blood tests and follow-up. Your GP and/or hospital team may continue monitoring your prostate health.

No test is perfect. A reassuring MRI greatly reduces the chance of significant prostate cancer, but it does not rule it out completely. This is why ongoing monitoring is important.

3. If Lucida Pi™ and the radiologist do not fully agree

Sometimes Lucida Pi™ may mark an area as suspicious, but the radiologist may feel it is unlikely to be cancer after carefully reviewing the images.

If this happens, your scan will be reviewed by a second radiologist (a second opinion). This extra check is part of our safety process to help ensure nothing important is missed.

After the second opinion, we will either recommend a biopsy or continue with PSA monitoring. In either case, we will explain the decision and what it means for you.

Who makes the final decision?

A radiologist (a specialist doctor who reads scans) always makes the final decision. They will:

- Carefully review your MRI images.
- Look at any areas of interest highlighted by Lucida Pi.
- Consider your PSA blood test, your medical history and symptoms.

The radiologist, not the computer, makes the final decision about your level of risk and what should happen next.

Important things to consider

- It is likely that **you will be in hospital for up to 6 hours** on the day of your tests.
- Please **make sure you have breakfast** on the day, and **bring some food and drink with you**.
- As this project is part of a pilot to shape our future services, **we may ask you to fill in some feedback forms** about your experience.
- Although we will be collecting data about you, **any data collected will be anonymised**, and only stored at your local hospital.

Your questions and choices

Any biopsy or follow-up plan is your choice. Nothing happens without your consent and agreement.

You are encouraged to:

- Ask questions at any point.
- Bring a partner, family member or friend.
- Tell us if anything is unclear or worrying.

What happens after the appointment

Before you leave, you should be told:

- How you will receive results.
- Roughly when to expect them.
- Who to contact if you have questions while waiting.

We are here to support you

If anything in this leaflet is unclear, please ask a member of our team to go through it with you.

If you need more support

It is normal to feel anxious at this stage. If you need support, speak to the clinic team or ask about nursing and support services.

If you have questions about your scan or next steps, please contact:

Urology team / Clinical Nurse Specialist:

- **Telephone: 0113 206 7872**
(Monday to Friday 9am - 5pm excluding bank holidays)

Radiology department:

- **Telephone: 0113 206 8964**
(Monday to Friday 8am - 5pm excluding bank holidays)

For emotional or practical support

Macmillan Cancer Support

- **Telephone: 0808 808 00 00**
(Open 7 days a week from 8am to 8pm)
- Website - Scan the QR code or follow the link below:

www.macmillan.org.uk/cancer-information-and-support/get-help



Prostate Cancer UK

- **Telephone: 0800 074 8383**
- Website - Scan the QR code or follow the link below:

<https://prostatecanceruk.org/prostate-information-and-support>



About your information

To use Lucida Pi™, some information from your scan and related tests may be processed through secure NHS systems. This may include your MRI scan, PSA results, biopsy results (if taken), and treatment information.

This information is used to support your care and for quality assurance, to ensure the software is working safely.

Your data is handled securely. Lucida Pi™ does not change your images and does not make a diagnosis.



What did you think of your care?

Visit: www.leedsth.nhs.uk/patients/support/feedback-complaints/friends-family-test/

Scan or click the QR code - Your views matter

© The Leeds Teaching Hospitals NHS Trust • 1st Edition Version 1
Developed by: Olly Hulson, Consultant Radiologist and Hannah Benashour,
Business Manager
Produced by: Medical Illustration Services • MID code: 20251205_006/MH

LN006186
Publication date
03/2026
Review date
03/2029