

# Kidney Biopsy

Information for patients,  
carers and relatives

**Easy  
Read**



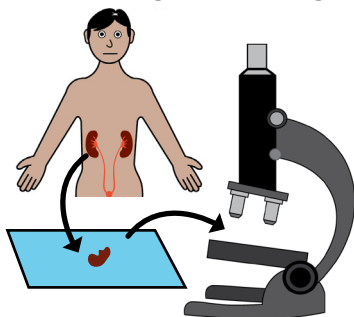
## easy read



This booklet uses easy words and pictures.

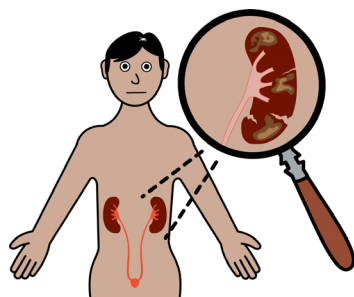
You might want to ask someone to help you read it.

## kidney biopsy



A kidney biopsy is where sample of a kidney is removed from the body.

## kidney problem



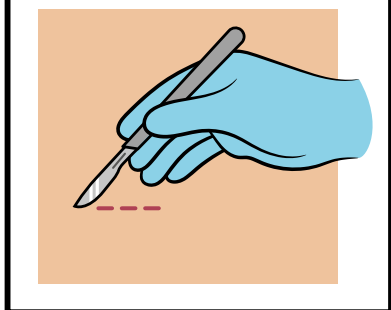
A kidney biopsy is usually done when other tests have not found cause of a kidney problem.

## ultrasound scan



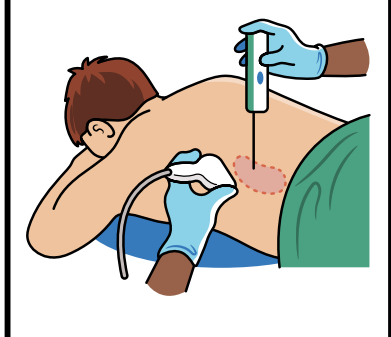
An ultrasound scanner is used to locate the precise part of the kidney for the biopsy.

## small cut



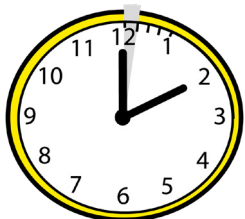
The doctor will make a small cut to the skin.

## large needle

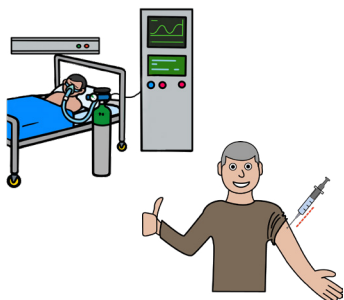


They will then insert a large needle which will take the biopsy.

**2 minutes**



**anaesthetic**



**easy read  
anaesthetic  
information**



The biopsy is quick.

Your doctor will talk about if you would like a local or general anaesthetic.

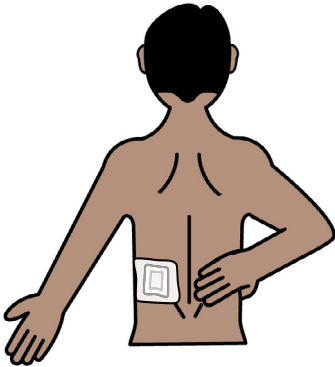
We have other easy read information to explain the difference.

## ward



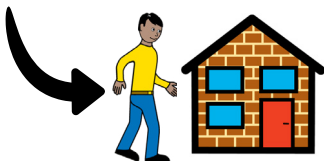
After the biopsy you will go back to the ward to rest.

## dressing



You will have a dressing on your biopsy site you need to keep on for 2-3 days.

## go home



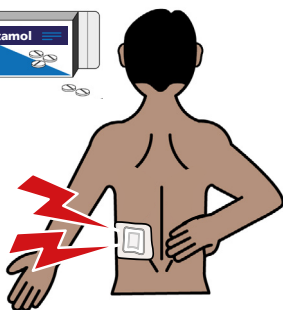
The Doctors will tell you when you can go home, this is usually the same day.

## get help



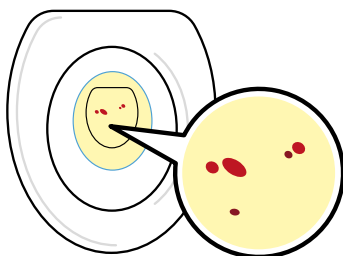
Before you leave the ward, you will be told when to get help if:

## pain



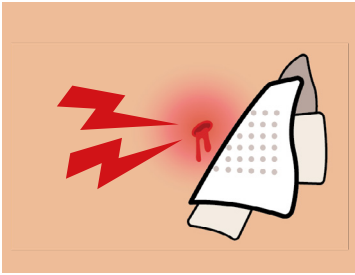
- The biopsy site is very painful, even with the use of paracetamol.

## blood in wee



- You can see blood, or blood clots in your wee after 24 hours.

## biopsy site



- There is any oozing or bleeding from the biopsy site, or if it becomes red.

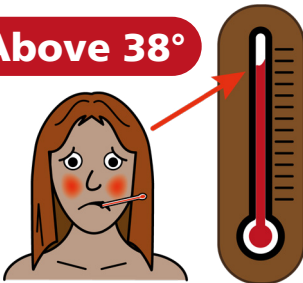
## cannot wee



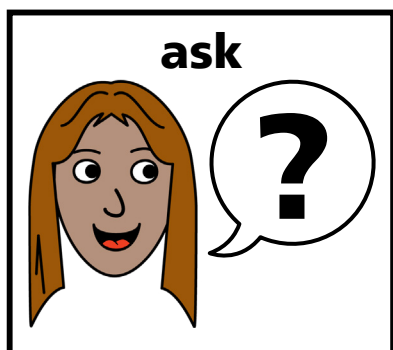
- You cannot wee.

## temperature

**Above 38°**



- You get a fever (temperature above 38°C).



- You feel faint or dizzy.

If you have any questions, you can ask the staff.

If you have a Learning Disability or Autism diagnosis please complete a **Health Passport** and return it to the Learning Disability and Autism team on:

**leedsth-tr.lidautism@nhs.net**







## The National Kidney Federation

The Point, Coach Road,  
Shireoaks, Worksop,  
Notts, S81 8BW

Email: [nkf@kidney.org.uk](mailto:nkf@kidney.org.uk)

Telephone:  
(01909) 544 999

**HELPLINE:**  
0800 169 09 36  
(free from UK Landlines  
and mobiles)



**What did you think of your care?**

Scan the QR code or visit [bit.ly/nhsleedsfft](https://bit.ly/nhsleedsfft)

***Your views matter***



© The Leeds Teaching Hospitals NHS Trust • 1<sup>st</sup> edition Ver 1.0  
Co-developed by: The Leeds Teaching Hospitals and the National Kidney Federation.  
Developed by: Rachel Barwick, CNS for Learning Disabilities & Autism Team  
All images / Resources Copyright © LYPFT easyonthei  
Produced by: Medical Illustration Services • MID code: M20250319\_032/DG

LN006027  
Publication date  
10 / 2025  
Review date  
10 / 2028