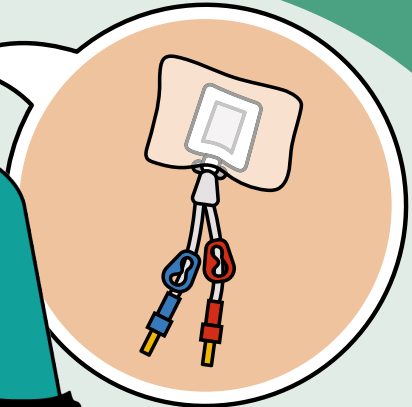


When and where to get help with your dialysis line

Information for patients,
carers and relatives

**Easy
Read**



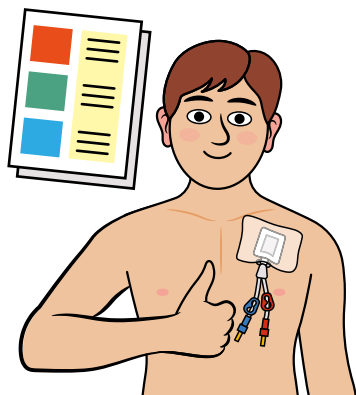
easy read



This booklet uses easy words and pictures.

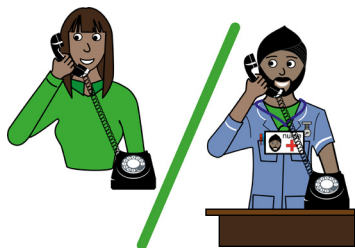
You might want to ask someone to help you read it.

care for line



Please read 'How to care for your line' easy read leaflet.

tell someone



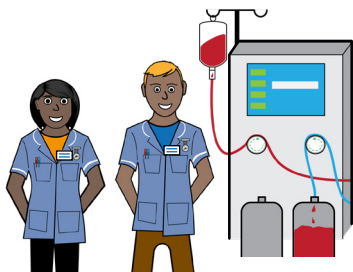
If you notice any changes to your line tell someone.

who to tell



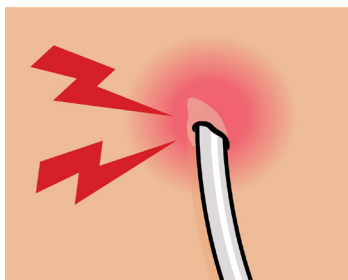
This leaflet explains who you need to tell depending on what is wrong with the line.

dialysis team



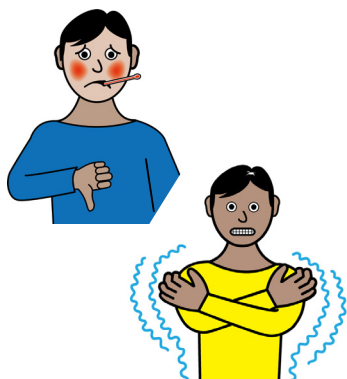
Tell your dialysis team if:

skin



The skin around your dialysis line is painful, swollen, red or has a discharge.

fever / chills



You have fevers or chills.

unwell



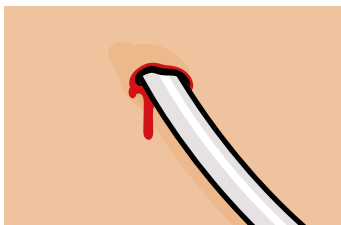
You are generally unwell.

Renal unit



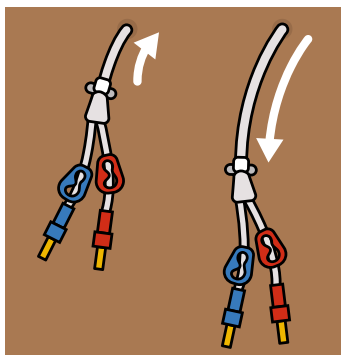
Contact your renal unit if:

light bleeding



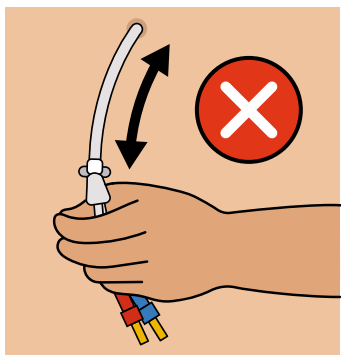
There is light bleeding from or around the tube.

line length



Or your line looks longer or shorter than normal.

change length



Never push or pull the line to change the length.

Call 999



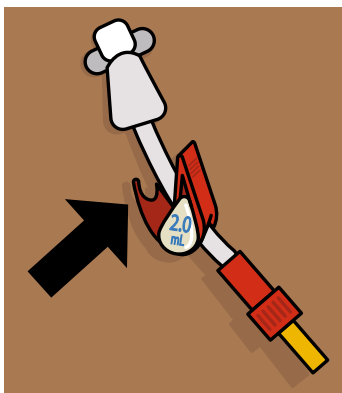
Call 999 and ask for an ambulance if:

lots of bleeding



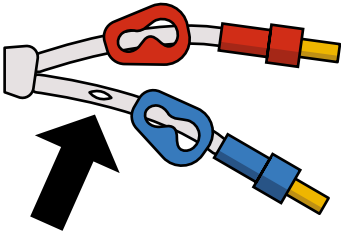
- There is a lot of bleeding.

broken clamp



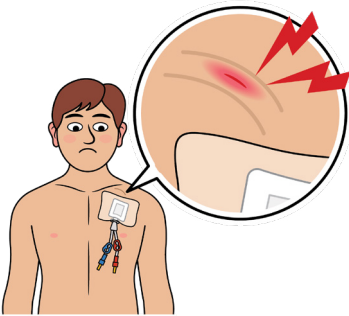
- The clamp has broken or fallen off.

hole in line



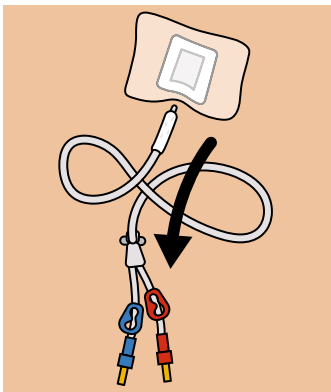
- There is a hole in your line.

skin broken



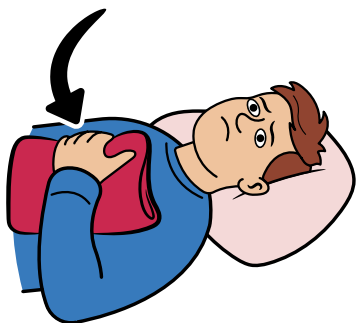
- If the skin has broken open over the line.

line fallen out



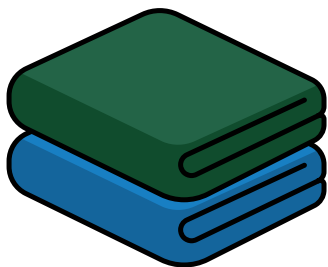
- Your line has fallen out.

apply pressure



If this happens, use a clean towel or or item of clothing to apply pressure to the area, and then lie down.

dark towels



Use dark towels if you have them.

support



The person answering your 999 call will support you until the paramedic comes.

ask staff



You can ask staff for more information if you are worried.

health passport



If you have a Learning Disability or Autism diagnosis please complete a **Health Passport** and return it to the Learning Disability and Autism team on:

leedsth-tr.ldautism@nhs.net



The National Kidney Federation

The Point, Coach Road,
Shireoaks, Worksop,
Notts, S81 8BW

Email: nkf@kidney.org.uk

Telephone:
(01909) 544 999

HELPLINE:
0800 169 09 36
(free from UK Landlines
and mobiles)



What did you think of your care?

Scan the QR code or visit bit.ly/nhsleedsfft

Your views matter



© The Leeds Teaching Hospitals NHS Trust • 1st edition Ver 1.0
Co-developed by: The Leeds Teaching Hospitals and the National Kidney Federation.
Developed by: Rachel Barwick, CNS for Learning Disabilities & Autism Team
All images / Resources Copyright © LYPFT easyonthei
Produced by: Medical Illustration Services • MID code: M20250319_022/DG

LN006017
Publication date
10 / 2025
Review date
10 / 2028