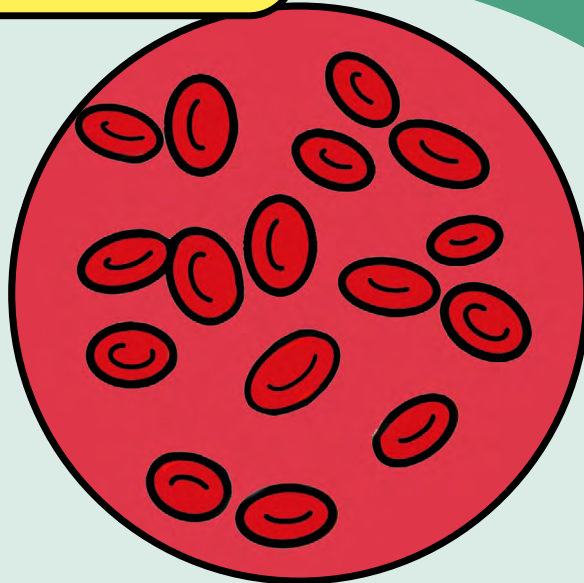


Chronic kidney disease - Anaemia management

Information for patients

Easy Read



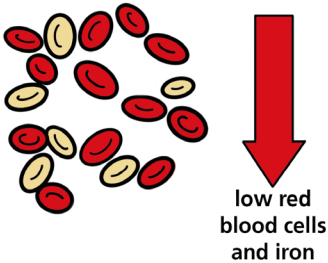
easy read



This booklet uses easy words and pictures.

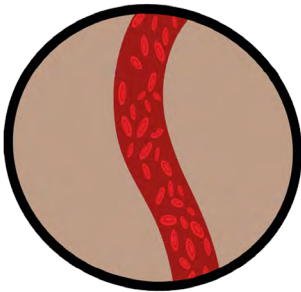
You might want to ask someone to help you read it.

anaemia



Anaemia is when you have low red blood cells and iron levels in your blood

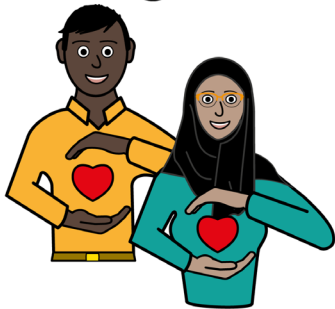
oxygen



These carry the oxygen around your body.

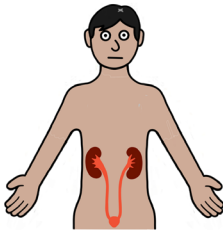
They are very important.

being well



Your organs need oxygen and healthy blood to keep working.

damage to the kidney



When your kidneys aren't working this can make you Anaemic.

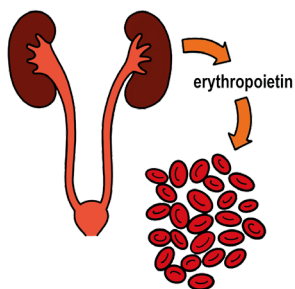
This is called renal anaemia.

normal anaemia



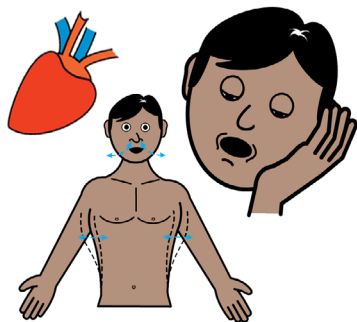
It is common for people with poorly kidneys to be anaemic.

hormone



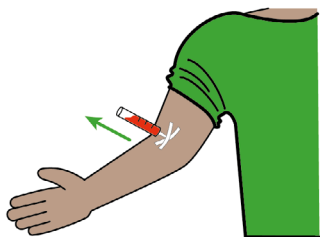
Your kidneys make a hormone that helps to make your red blood cells.

tired



Anaemia can cause, tiredness, breathing difficulties and makes your heart work harder.

taking blood



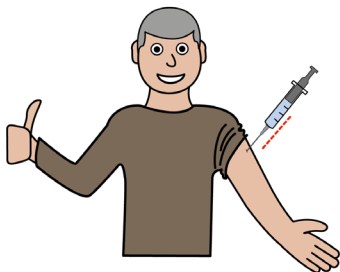
The hospital staff will check your bloods regularly to monitor.

prescription



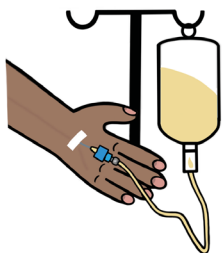
If you are anaemic you will be given a treatment plan that might include:

injection



An injection to replace the hormone.

cannula with iron



Intravenous (IV) Iron, to boost your iron levels.

This is given at the hospital.

phone your hospital

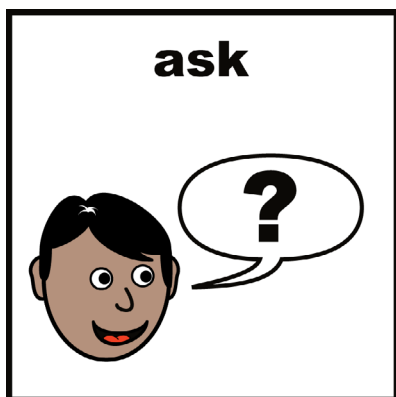


Your nurse will let you know your blood results and if you need treatment

easy read



We have other easy reads available to help you understand.



If you have a Learning Disability or Autism diagnosis please complete a Health Passport and return it to the Learning Disability and Autism team on: leedsth-tr.lautism@nhs.net

If you have any questions, please speak to your team.



The National Kidney Federation,

The Point, Coach Road,
Shireoaks, Worksop, Notts,
S81 8BW

Email:

nkf@kidney.org.uk

Telephone:

(01909) 544 999

HELPLINE:

0800 169 0936

(free from UK Landlines
and Mobiles)



What did you think of your care?

Scan or click QR code, or visit [bit.ly/nhs leeds fft](https://bit.ly/nhs_leeds_fft)

Your views matter

© The Leeds Teaching Hospitals NHS Trust • 1st Edition Version 1
Co-developed by: The Leeds Teaching Hospitals and the National Kidney Federation.

Author: Kathleen Smith • QI Clinician, Learning Disabilities and Autism.
All images / Resources Copyright © LYPFT easyonthei

Produced by: Medical Illustration Services • MID code: 20250319_017/RC

LN006013
Publication date
10/2025
Review date
01/2029