

# Chronic kidney disease - Haemodialysis

Information for patients

**Easy Read**





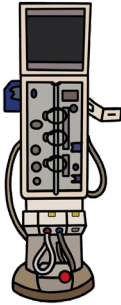
## easy read



This booklet uses easy words and pictures.

You might want to ask someone to help you read it.

## dialyser



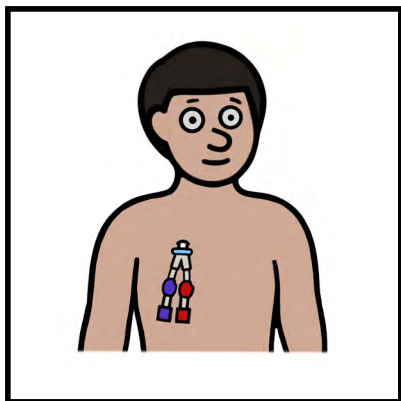
Haemodialysis is using a machine called a dialyser



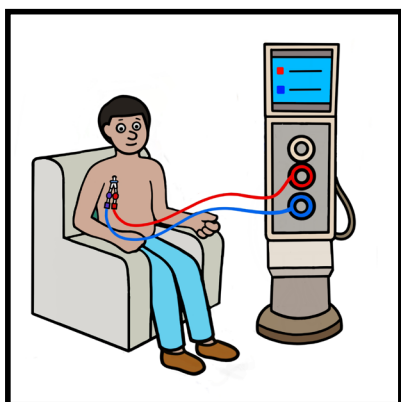
It does the work of your kidneys to clean your blood.



You will have either a fistula which the dialyser will connect to.

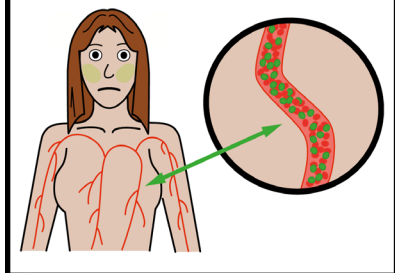


Or you will have a permanent line inserted into a vein.

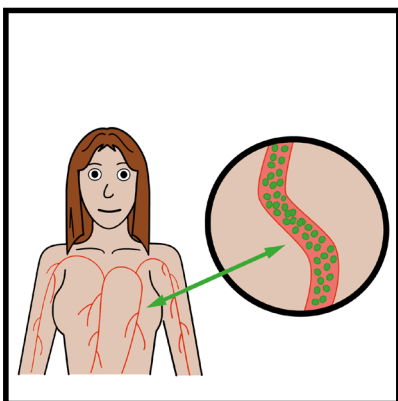


These are used to attach you to the dialyser machine.

## toxins

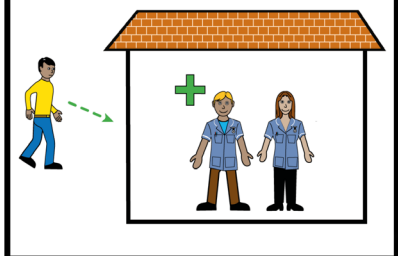


Blood from your body goes into the machine and the toxins are removed



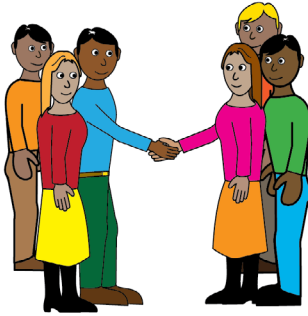
The clean blood then goes back into your body.

## appointment

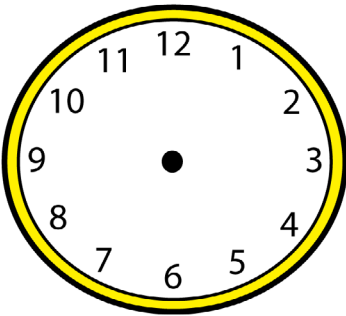


You will visit the department before to prepare.

## meeting people

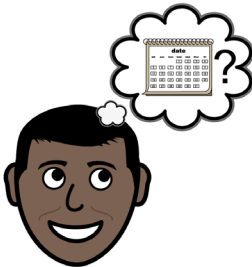


You will get to meet the team before your first session



Each dialysis treatment takes four hours although this can sometimes be longer or shorter.

## when



You will go for dialysis on the same day, and at the same time each week.

## activities



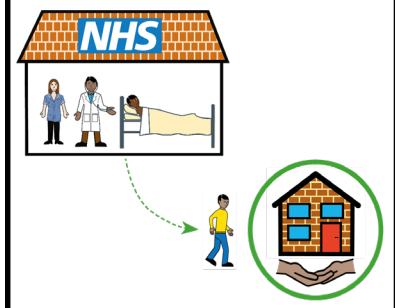
You can bring activities to do while you wait.



You can have dialysis at hospital or a clinic closer to home.

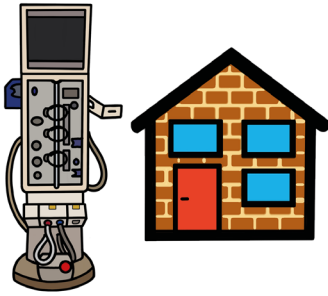
Some people even have dialysis at home

## satellite unit



Clinics in the community are called satellite units.

## home



To have dialysis at home you will need space for the specialist equipment.

## support



You will need someone who is able to support all the sessions.

## team



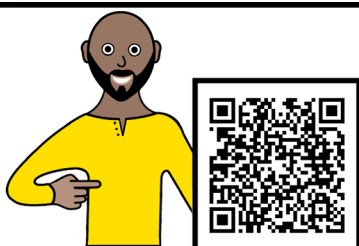
There is a specialist home haemodialysis team that support this service



# easy read



We have other easy reads available to help you understand.



**Get me? Get Me Better!**



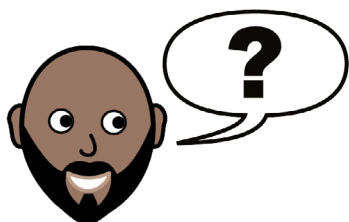
**Hospital Passport**

My name is

I like to be called

If you have a Learning Disability or Autism diagnosis please complete a Health Passport and return it to the Learning Disability and Autism team on: [leedsth-tr.ldautism@nhs.net](mailto:leedsth-tr.ldautism@nhs.net)

**ask**



If you have any questions, please speak to your team.





## **The National Kidney Federation,**

The Point, Coach Road,  
Shireoaks, Worksop, Notts,  
S81 8BW

### **Email:**

[nkf@kidney.org.uk](mailto:nkf@kidney.org.uk)

### **Telephone:**

(01909) 544 999

### **HELPLINE:**

0800 169 0936  
(free from UK Landlines  
and Mobiles)



## **What did you think of your care?**

Scan or click QR code, or visit [bit.ly/nhs leeds fft](https://bit.ly/nhs_leeds_fft)

***Your views matter***

© The Leeds Teaching Hospitals NHS Trust • 1st Edition Version 1  
Co-developed by: The Leeds Teaching Hospitals and the National Kidney Federation.

Author: Kathleen Smith • QI Clinician, Learning Disabilities and Autism.  
All images / Resources Copyright © LYPFT easyonthei

Produced by: Medical Illustration Services • MID code: 20250319\_016/RC

LN006012  
Publication date  
10/2025  
Review date  
01/2029