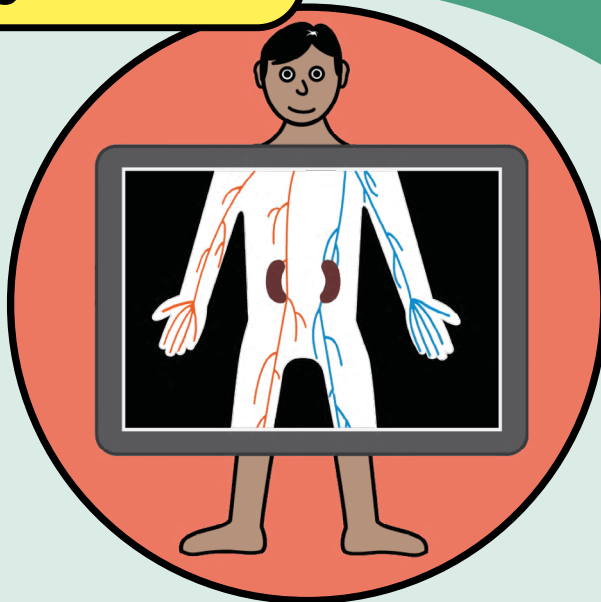


Renal - Fistulogram

Information for patients

Easy Read



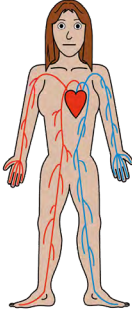
easy read



This booklet uses easy words and pictures.

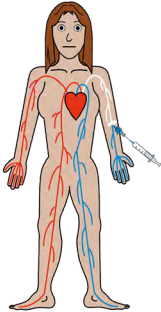
You might want to ask someone to help you read it.

heart and veins



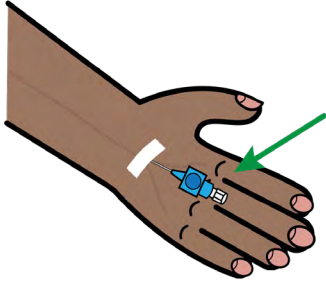
This is an examination of your blood vessels

contrast fluid



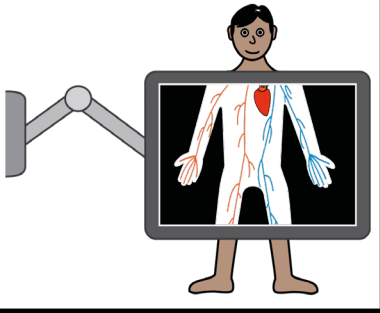
Some colour dye is injected into your blood stream

cannula



The nurse will do this by fitting a cannula in your vein.

x-ray

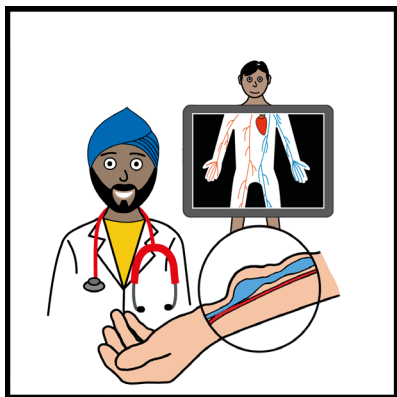


This will show up your blood vessels on an x-ray.

doctor



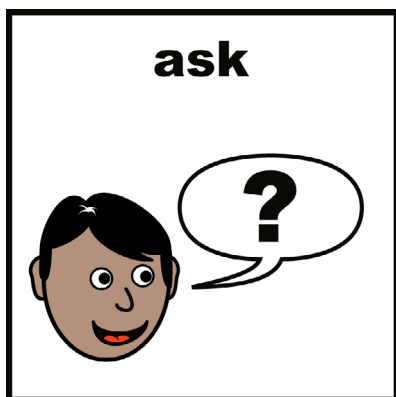
This means the doctor can see where your blood vessels are in your body.



This helps them find a good place to make your fistula



We have other easy reads available to help you understand.



If you have a Learning Disability or Autism diagnosis please complete a Health Passport and return it to the Learning Disability and Autism team on: leedsth-tr.l autism@nhs.net

If you have any questions, please speak to your team.



The National Kidney Federation,

The Point, Coach Road,
Shireoaks, Worksop, Notts,
S81 8BW

Email:

nkf@kidney.org.uk

Telephone:

(01909) 544 999

HELPLINE:

0800 169 0936
(free from UK Landlines
and Mobiles)



What did you think of your care?

Scan or click QR code, or visit [bit.ly/nhs leeds fft](https://bit.ly/nhs_leeds_fft)

Your views matter

© The Leeds Teaching Hospitals NHS Trust • 1st Edition Version 1
Co-developed by: The Leeds Teaching Hospitals and the National Kidney Federation.

Author: Kathleen Smith • QI Clinician, Learning Disabilities and Autism.
All images / Resources Copyright © LYPTF easyonthei

Produced by: Medical Illustration Services • MID code: 20250319_012/RC

LN006008
Publication date
10/2025
Review date
01/2029