

Catheter fitting for continuous ambulatory peritoneal dialysis

Information for patients

Easy Read



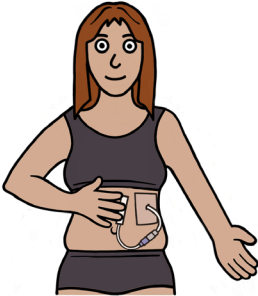
easy read



This booklet uses easy words and pictures.

You might want to ask someone to help you read it.

catheter



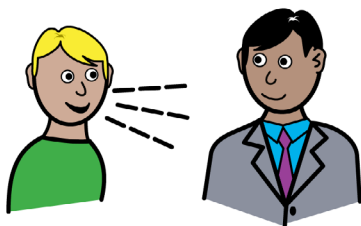
You need to have Peritoneal Dialysis, a catheter (or line) called a Tenckhoff catheter, will be fitted.

stomach



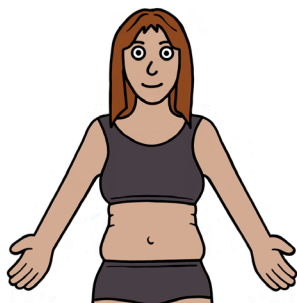
It is a small plastic tube that will be put into the lower part of your abdomen.

talk to



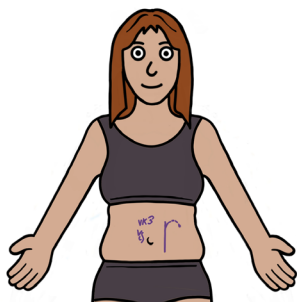
The doctor will talk to you about where the catheter is placed.

skin



They will avoid;
Skin folds,
Area where your clothing waist bands sit
And the side you sleep on.

marks



The doctors will mark where they are putting the catheter before the operation.

having an anaesthetic



sleeping



stomach pain

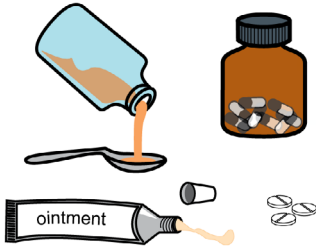


They will give you some medicine called General Anaesthetic.

You will be asleep during the operation.

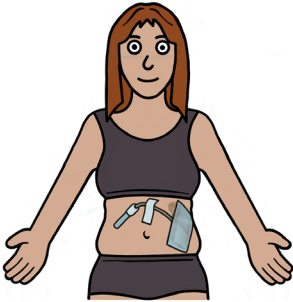
You will not feel anything during the operation.

medication



When you wake up staff will give you pain relief if you need it .

dressings



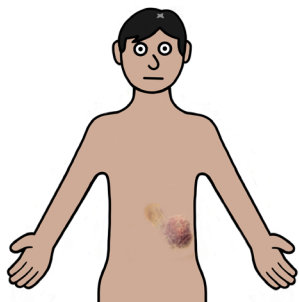
You will have a dressing over and stiches where the catheter is fitted.

date

sat	sun	mon	tues	wed	thur	fri
			1	2	3	4
5	6	7	8	9	10	11
12	13	14	15	16	17	18
19	20	21	22	23	24	25
26	27	28	29	30	31	

You will keep these on for 10 days.

bruising



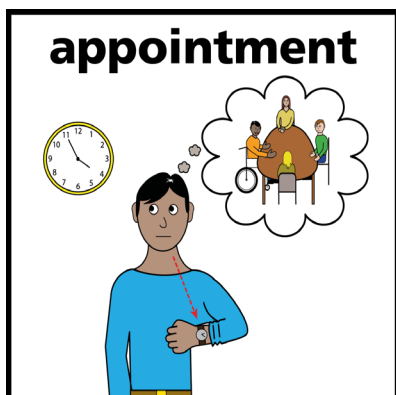
You might have some bruising on your skin, where the tube has gone in.

leave hospital

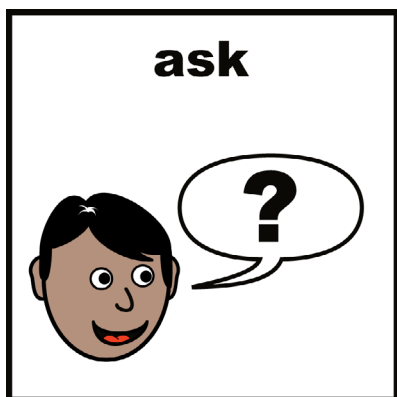


You should be able to go home the same day.

appointment



You will get an appointment to see the nurses for review after your surgery.



If you have a Learning Disability or Autism diagnosis please complete a Health Passport and return it to the Learning Disability and Autism team on: leedsth-tr.ldautism@nhs.net

If you have any questions, please speak to your team.



The National Kidney Federation,

The Point, Coach Road,
Shireoaks, Worksop, Notts,
S81 8BW

Email:

nkf@kidney.org.uk

Telephone:

(01909) 544 999

HELPLINE:

0800 169 0936
(free from UK Landlines
and Mobiles)



What did you think of your care?

Scan or click QR code, or visit [bit.ly/nhs leeds fft](https://bit.ly/nhs_leeds_fft)

Your views matter

© The Leeds Teaching Hospitals NHS Trust • 1st Edition Version 1
Co-developed by: The Leeds Teaching Hospitals and the National Kidney Federation.

Author: Kathleen Smith • QI Clinician, Learning Disabilities and Autism.
All images / Resources Copyright © LYPFT easyonthei

Produced by: Medical Illustration Services • MID code: 20250319_004RC

LN006003
Publication date
10/2025
Review date
01/2029