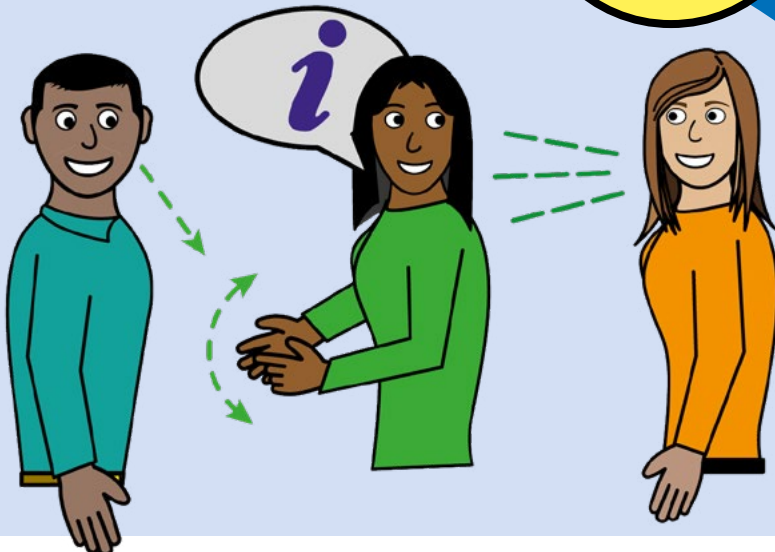


Interpreting Services at Leeds Hospitals

Information for patients

**Easy
Read**



easy read



This booklet uses easy words and pictures.

You might want to ask someone to help you read it.

other languages

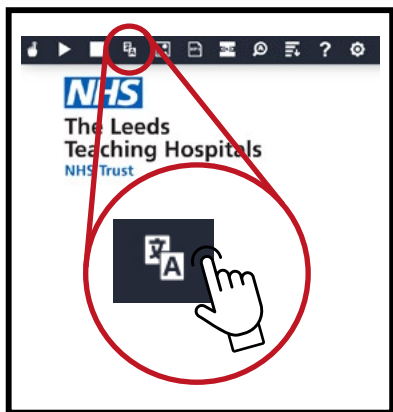


If you don't speak English you may need help with translation.



The Trust website will translate into your language.

Click on this symbol.



You will see this.

Click to select
Translation.



If you use British Sign
Language (BSL) you
may need help with
interpreting.



The Trust website shows
you how to contact us
to tell us you need a BSL
interpreter.

convo



Download the 'Convo Now' app to your device from the app store or Google Play.

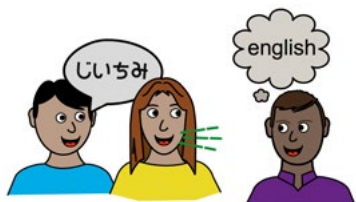


Search Leeds Teaching Hospitals in the Community Directory.

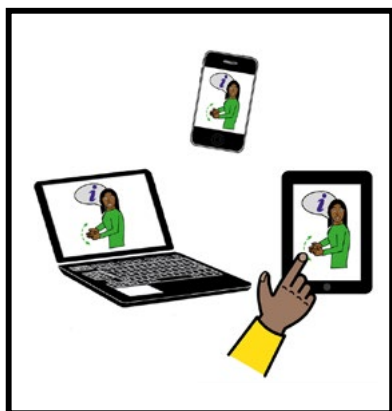


We can ask a British Sign Language interpreter to support you when you attend the hospital.

interpreter



We can get an interpreter to support with non-English verbal language communication.



We can provide an interpreter on our iPads, laptops and mobile devices.



If you would like an interpreter when you come to hospital, let us know before you come.

The phone number will be on your letter.

website



www.leedsth.nhs.uk/patients/resources

Visit www.leedsth.nhs.uk/patients/resources to read all our patient information leaflets in English and non-English languages.

hospital passport



If you have a Learning Disability or Autism diagnosis please complete a Health Passport and return it to the Learning Disability and Autism team on:

**leedsth-tr.l autism
@nhs.net**



What did you think of your care?

Scan the QR code or visit bit.ly/nhsleedsfft

Your views matter



© The Leeds Teaching Hospitals NHS Trust • 1st edition (Version 2)
Developed by: Alison Sherry, Lead for Patient Information Leaflets, Patient Experience Team
All images / Resources Copyright © LYPFT easyonthei
Produced by: Medical Illustration Services • MID code: M20250221_008/BP

LN005998
Publication date
Ver 2 10 / 2025
Review date
05 / 2028