

Advance care planning

Information for patients



Easy Read



Leeds Palliative
Care Network

easy read



This booklet uses easy words and pictures.

You might want to ask someone to help you read it.

our choice



Advance care planning is when you make choices about your care in the future.



Sometimes in an emergency, or if you are very unwell, you might not be able to tell people what matters to you.



Having this written down before means people will know what you want.



You do not have to do it.



It can be difficult to talk about a time when you might be less well.

help writing your plan



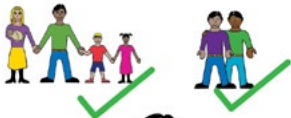
You can get support from your doctors, nurses or social care team to do this.

important to me



You are the most important person in this and what you want matters.

people important to me



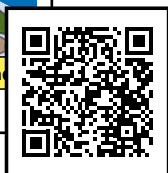
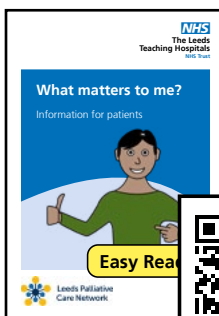
You can decide who you want to be included in these conversations.

Who is important to you?

write down



Once you all have agreed on a plan, you can write this down.



Please use our leaflet;

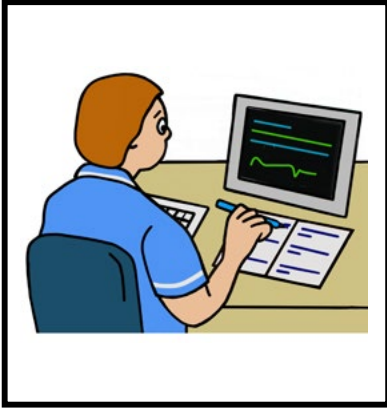
What matters to me?

To help think about what you want to write down.

write down

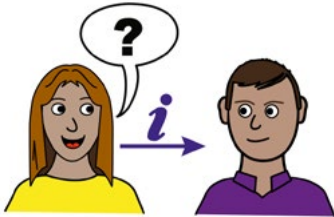


Your doctor, nurse or social worker can give you a booklet to write in.



They will then record your wishes on your care record.

share information



This is so everyone looking after you knows what matters to you.

change your mind



If you change your mind about some of your choices, this is ok.

You can change your mind at any time.

review of your care plan



Your doctor, nurse or social worker will ask you about the plan regularly.

This is to check if anything has changed.

talk to keyworker



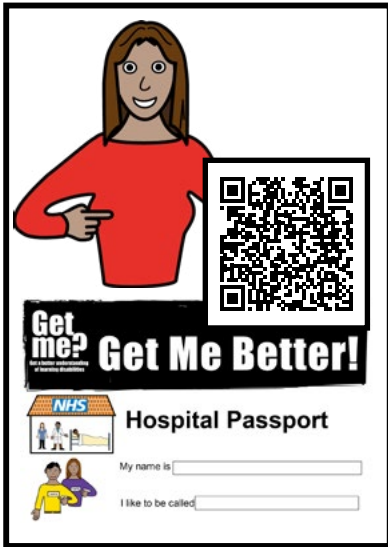
If you, or anyone involved, is not happy with the plan tell your care team.

They will support.

ask



If you have any questions, you can ask at any time.



Please visit:

www.leedspalliativecare.org.uk for information about local services in Leeds.

We have other Easy reads leaflets available here.

If you have a Learning Disability or Autism diagnosis please complete a Health Passport and return it to the Learning Disability and Autism team on: leedsth-tr.ldautism@nhs.net



What did you think of your care?

Scan the QR code or visit bit.ly/nhsleedsfft

Your views matter



© The Leeds Teaching Hospitals NHS Trust • 1st edition (Ver 1)
Developed by: Kathleen Smith, QI Clinician, Learning Disabilities and Autism
All images / Resources Copyright © LYPFT easyonthei
Produced by: Medical Illustration Services • MID code: M20240705_005/BP

LN005858
Publication date
09/2024
Review date
09/2027