

Viral Gastroenteritis

Information for patients,
carers and relatives

**Easy
Read**



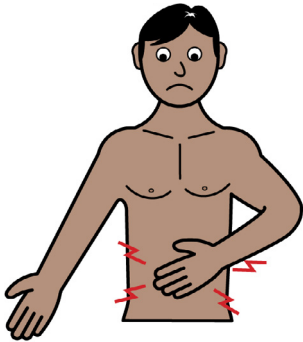
easy read



This booklet uses easy words and pictures.

You might want to ask someone to help you read it.

tummy



Viral Gastroenteritis is an illness that affects your tummy.

unwell



It might give you some symptoms that make you feel unwell.

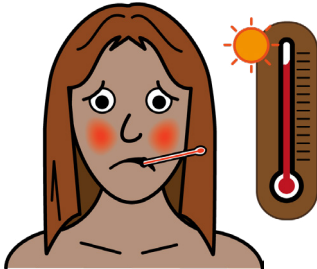
vomit



diarrhoea



high temperature



You might get the following symptoms:

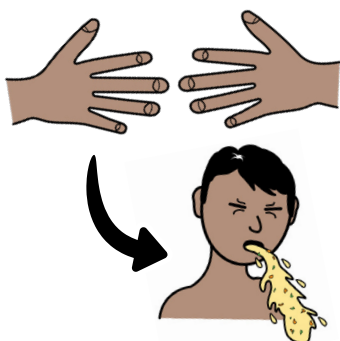
- You might feel sick and vomit.
- You might get diarrhoea.
- You might get a high temperature.

headache



- You might get a headache.

spreads



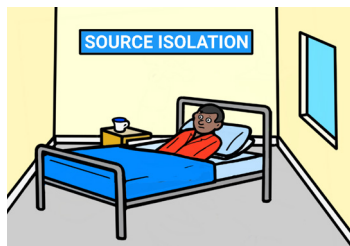
Viral Gastroenteritis is an infection that spreads from person to person by touch.

wash hands



Good hand washing is very important.

source isolation



You will be moved to a separate area on the ward - this is called source isolation.

separate toilet



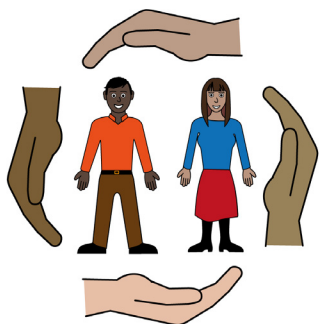
You will use a separate toilet to other patients.

poo sample



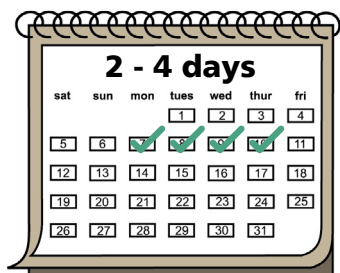
You will need to give a sample of your poo if you have diarrhoea.

everyone safe



This is to help stop the infection spreading to others and keep everyone safe.

2 - 4 days



Symptoms usually last between 2 and 4 days.

feel better



People usually get better without any treatment.

drink water



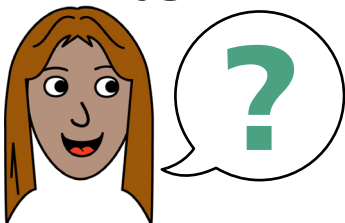
It is important to drink a lot of water to stay hydrated.

visitors wash hands



Anyone visiting you in hospital must wash their hands with soap and water as they come in and leave your room.

ask



If you have any questions, you can ask the staff.

health passport



If you have a Learning Disability or Autism diagnosis please complete a **Health Passport** and return it to the Learning Disability and Autism team on:

leedsth-tr.lautism@nhs.net



What did you think of your care?

Scan the QR code or visit bit.ly/nhsleedsfft

Your views matter



© The Leeds Teaching Hospitals NHS Trust • 1st edition Ver 1.0

Developed by: Kathleen Smith, QI Clinician, Learning Disabilities and Autism
All images / Resources Copyright © LYPFT easyonthei

Produced by: Medical Illustration Services • MID code: M20240603_010/DG

LN005851

Publication date
09 / 2025
Review date
09 / 2028