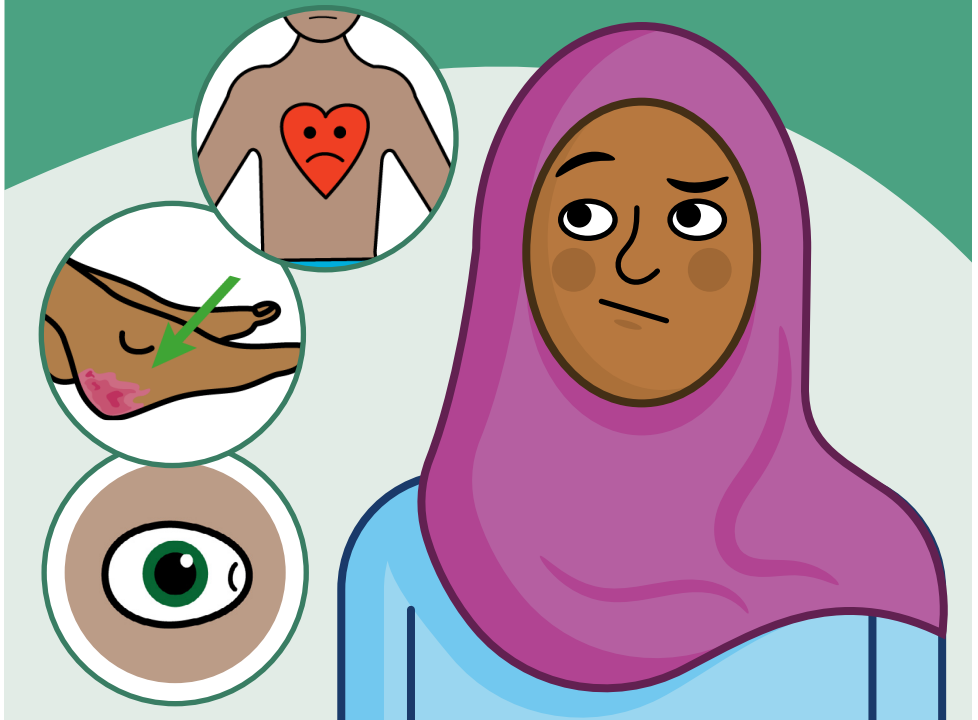


# Type 2 Diabetes - What happens without treatment?

Information for patients,  
carers and relatives

**Easy  
Read**



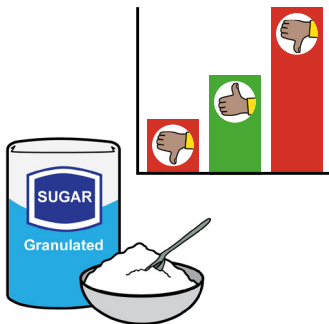
## easy read



This booklet uses easy words and pictures.

You might want to ask someone to help you read it.

## blood sugar



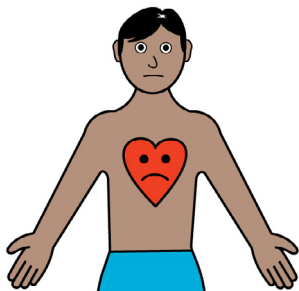
If your blood sugar levels are not treated your health will get worse.

## ill



It can lead to very serious health conditions.

## heart disease



**Some health problems you can develop are:**

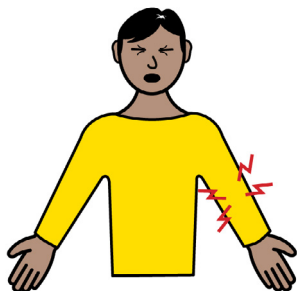
Heart disease / stroke.

## feeling in hands and feet



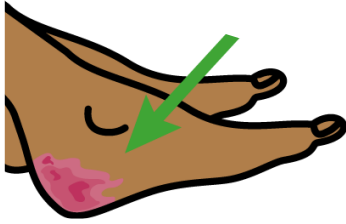
Loss of feeling in your hands or feet.

## pain



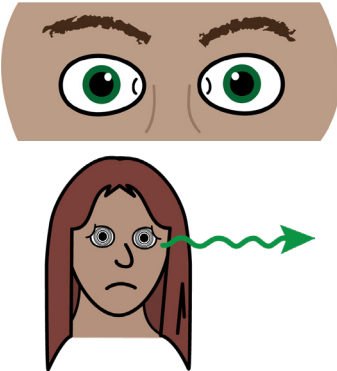
Neuropathic (nerve) damage and pain.

## foot sores



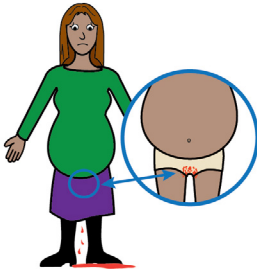
Foot sores and infection that can lead to amputation.

## eye problems



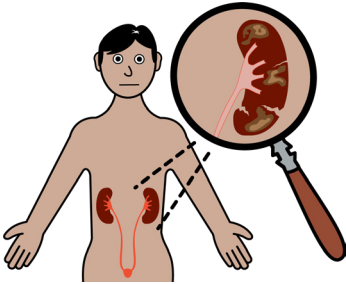
Vision loss and blindness.

## pregnancy problems



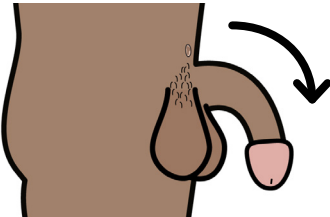
Still birth and miscarriage.

## **damage to kidneys**



Damage to your kidneys.

## **erection problems**



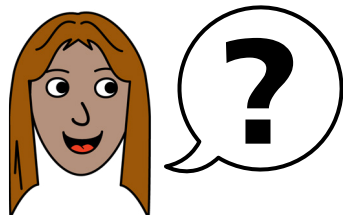
Problems keeping or getting an erection.

## **speak to GP**



It's important to get help, speak to your GP.

ask



## health passport



## easy read leaflets



If you have any questions, you can ask the staff.

If you have a Learning Disability or Autism diagnosis please complete a **Health Passport** and return it to the Learning Disability and Autism team on:

**leedsth-tr.ldautism@nhs.net**

We have other easy reads to support you. Scan or click this QR code to see our range of easy read leaflets.







## What did you think of your care?

Visit: [www.leedsth.nhs.uk/patients/support/feedback-complaints/friends-family-test/](http://www.leedsth.nhs.uk/patients/support/feedback-complaints/friends-family-test/)

*Scan or click the QR code - Your views matter*



© The Leeds Teaching Hospitals NHS Trust • 1st edition Ver 1.0

Developed by: Kathleen Smith • Quality Improvement Clinician for Learning Disability and Autism. All images / Resources Copyright © LYPFT easyonthei  
Produced by: Medical Illustration Services • MID code: 20240529\_002/DG

**LN005844**

Publication date  
01 / 2026  
Review date  
01 / 2029