

When to contact the hospital after Chemotherapy

Information for
patients, carers
and relatives

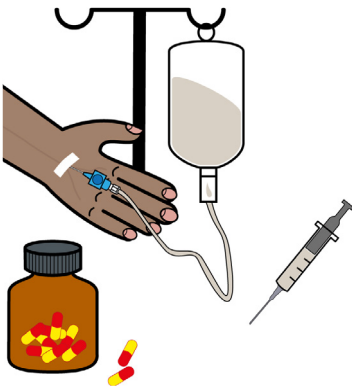
**Easy
Read**



easy read



chemotherapy



poorly



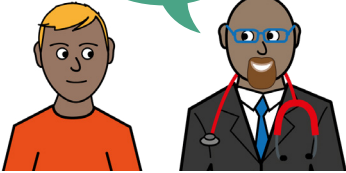
This booklet uses easy words and pictures.

You might want to ask someone to help you read it.

Chemotherapy is a drug usually given to treat cancer.

It has side effects that can make you feel poorly.

advice



You will be given advice and medicines to help these side effects.

contact for help



You will need to contact the Oncology team for help if:

high temperature

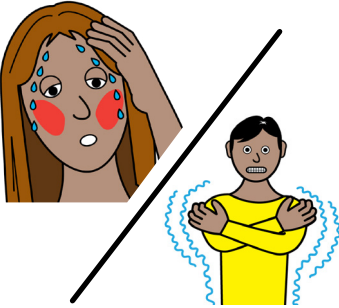
Above 38°



You have a high temperature **above 38 degrees**.

Even if you do not feel unwell.

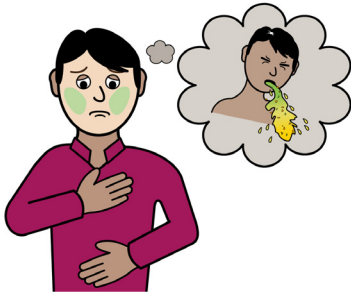
hot or cold shivers



If you have any signs of infection;

Feeling hot or cold - shivers.

feeling sick



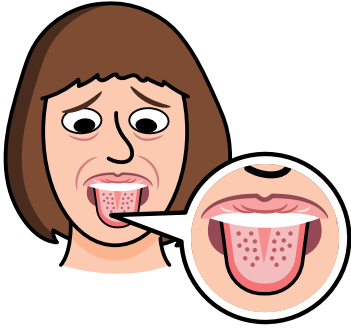
Nausea or vomiting not controlled by your medicines.

diarrhoea



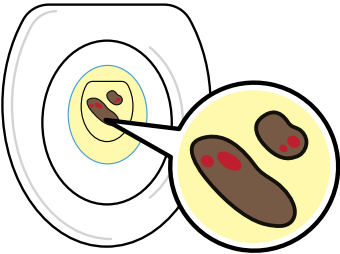
Diarrhoea lasting more than 24 hours.

sore mouth



A sore mouth that stops you eating or drinking.

blood in wee or poo



Blood in your wee or poo.

coughing



You can't stop coughing.

**don't stop
bleeding**



dentist



who to call



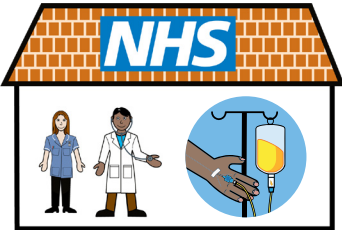
You will need to contact the Oncology team for help if:

You can not stop the bleeding from a cut.

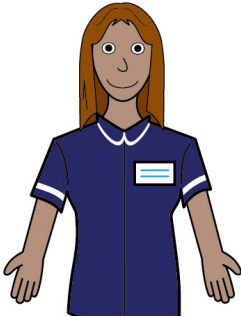
You need dental treatment.

Who to call?

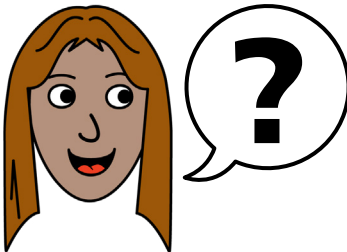
oncology unit



hospital switchboard



ask



Monday to Friday

8:30am - 6:00pm

Ring the Oncology unit
on:

Out of hours phone the
hospital switchboard
and ask for the oncology
bleep holder on:

If you have any
questions, you can ask
the staff.

hospital passport



If you have a Learning Disability or Autism diagnosis please complete a Health Passport and return it to the Learning Disability and Autism team on:

leedsth-tr.ldautism@nhs.net

easy read leaflets



We have other easy reads to support you.

Scan this QR code to see our range of easy read leaflets.



What did you think of your care?

Scan the QR code or visit bit.ly/nhsleedsfft

Your views matter



© The Leeds Teaching Hospitals NHS Trust • 1st edition Ver 1.0

Developed by: Kathleen Smith • Quality Improvement Clinician for Learning Disability and Autism. All images / Resources Copyright © LYPFT easyonthei
Produced by: Medical Illustration Services • MID code: M20240110_007/DG

LN005776
Publication date
05 / 2024
Review date
05 / 2027