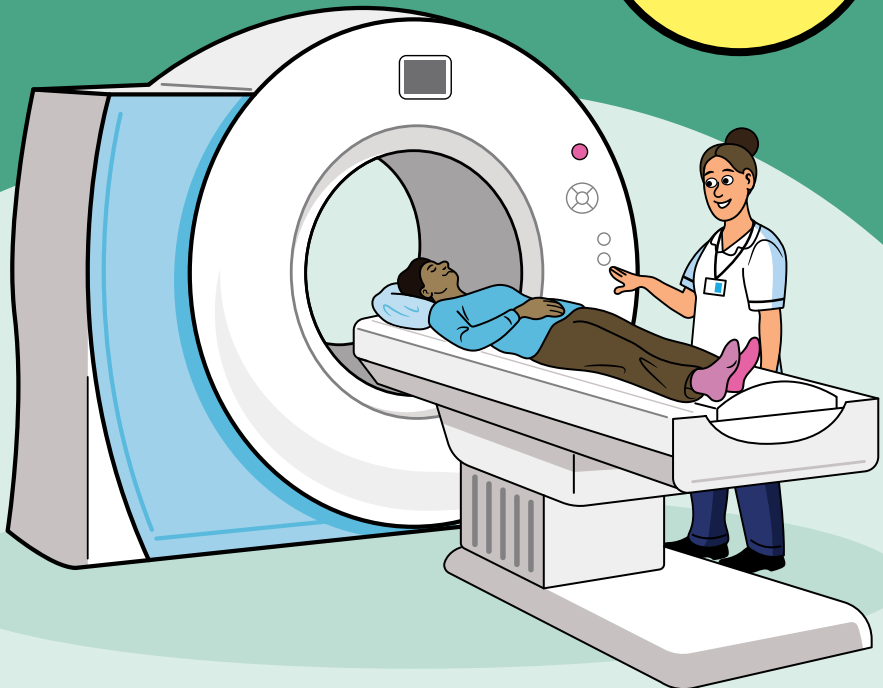


Having a CT scan

Information for patients,
carers and relatives

**Easy
Read**



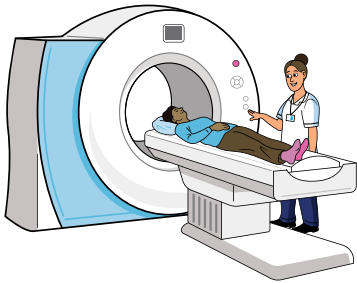
easy read



This booklet uses easy words and pictures.

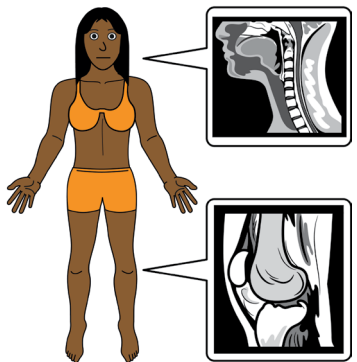
You might want to ask someone to help you read it.

CT scan



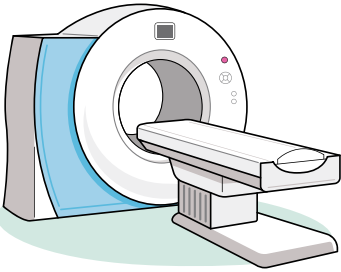
This booklet is about having an CT scan.

CT pictures



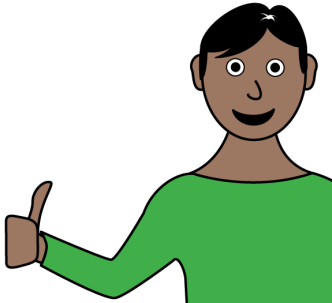
An CT scan takes pictures of the inside of your body.

CT scanner



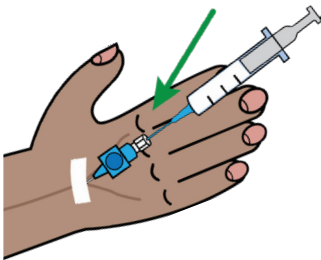
The scanner looks like a big donut with a hole in it. It has a special bed for you to lie on.

does not hurt



The CT scan does not hurt and is not bad for you.

injection



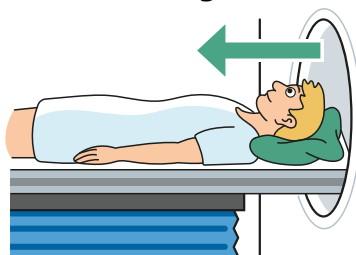
Sometimes people have an injection of a liquid called contrast.

This goes into your veins.

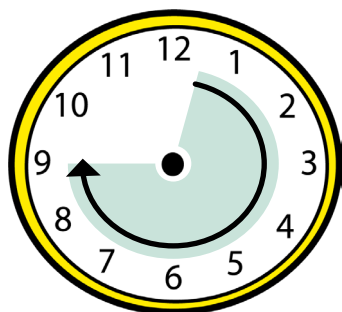
lay still



scanner moves over you



2 - 45 minutes

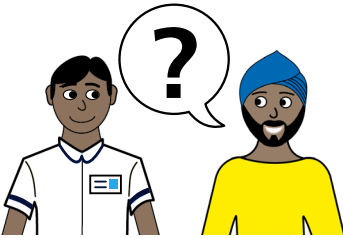


You need to lay still during the scan.

The bed you lay on will stay still. The scanner will move.

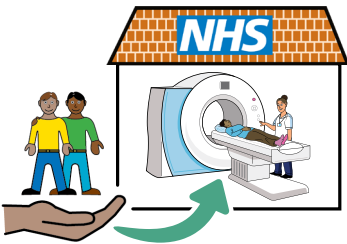
The scan usually lasts 2—45 minutes.

talk to staff



You will be able to talk to the staff all the time.

support during scan



You will be on your own in the scanning room for short periods.

Tell staff if you need someone with you at all times.

hospital passport



If you have a Learning Disability or Autism diagnosis please complete a Health Passport and return it to the Learning Disability and Autism team on:

leedsth-tr.lidautism@nhs.net

easy read leaflets



We have other easy reads to support you.

Scan this QR code to see our range of easy read leaflets.



What did you think of your care?

Scan the QR code or visit bit.ly/nhsleedsfft

Your views matter



© The Leeds Teaching Hospitals NHS Trust • 1st edition Ver 1.0
Developed by: Rachel Barwick CNS - Learning Disability and Autism Team.
All images / Resources Copyright © LYPFT easyonthei
Produced by: Medical Illustration Services • MID code: M20231123_005/DG

LN005756
Publication date
11 / 2023
Review date
11 / 2026