

Coming to Bexley Wing for Radiology

Information for patients,
carers and relatives

**Easy
Read**



easy read



Bexley wing



Reception



This booklet uses easy words and pictures.

You might want to ask someone to help you read it.

You will come to the Bexley wing at St James Hospital.

When you enter there is the reception area with shops and seating in the entrance.

ground floor



walk towards the green lifts



Radiology Department



You will stay on the ground floor.

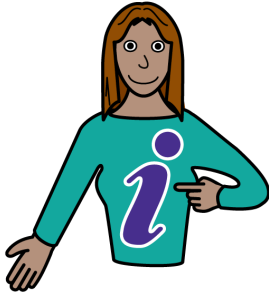
Walk past the piano and seating area, until you get to the green lifts.

The Radiology Department is on the left side (Opposite the green lift).

reception area



information about me



write down



When you enter the department, you will see the reception area.

Staff will ask you your:

- Name
- NHS number
- Address

All our staff wear name badges.

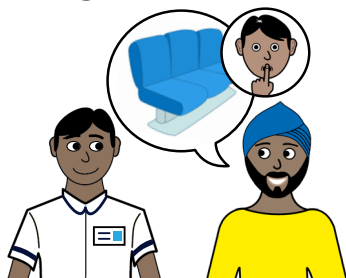
If you are worried you can have these written down or bring your letter with you.

waiting area



Staff will tell you which waiting area you need to wait in.

reasonable adjustments



Please let staff know if you have any reasonable adjustments - like needing a quiet area to wait in.

support



You can bring someone with you to support you.

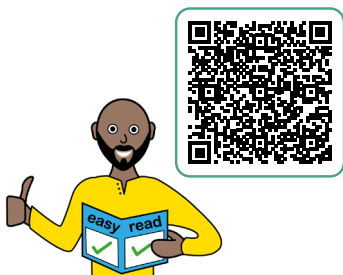
bring items



staff will come get you



easy read leaflets



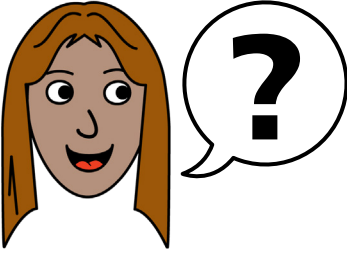
You can bring any sensory or occupation items you might need for the wait.

Staff will come to get you when it's your appointment.

We have other easy reads that will explain the scans in Radiology if you would like more information.

Scan this QR code to see our range of easy read leaflets.

ask



If you have any questions, you can ask the staff.

hospital passport



If you have a Learning Disability or Autism diagnosis please complete a Health Passport and return it to the Learning Disability and Autism team on:

**leedsth-tr.lidautism
@nhs.net**



What did you think of your care?

Scan the QR code or visit bit.ly/nhsleedsfft

Your views matter



© The Leeds Teaching Hospitals NHS Trust • 1st edition Ver 1.0
Developed by: Rachel Barwick CNS - Learning Disability and Autism.
All images / Resources Copyright © LYPFT easyonthei
Produced by: Medical Illustration Services • MID code: M20231122_009/DG

LN005755
Publication date
11 / 2023
Review date
11 / 2026