

Clostridioides Difficile Infection (CDI)

Information for patients,
carers and relatives

**Easy
Read**



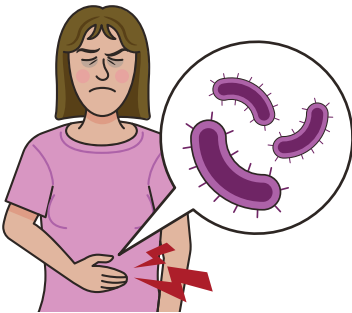
easy read



This booklet uses easy words and pictures.

You might want to ask someone to help you read it.

CDI



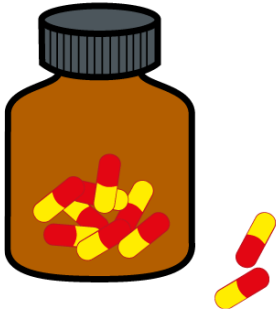
CDI is an infection that can cause you to feel poorly, have diarrhoea and sometimes have stomach pain.

poo sample



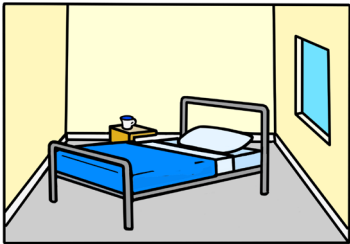
You doctor or nurse may ask for a sample of your poo to test.

antibiotics



If you have the infection, you will be giving some antibiotics (tablets).

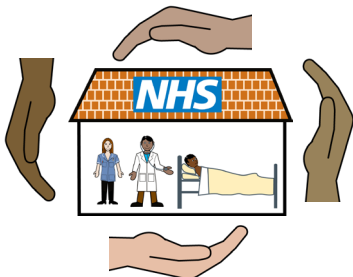
side room



You will move to a side room or a separate area on the ward.

This is called source isolation.

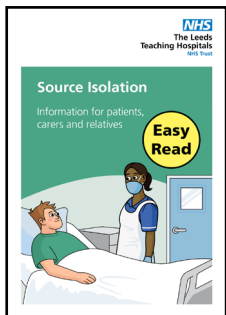
safe



This is to keep you and everyone in hospital safe.

And help stop the spread of infections.

source isolation



We have an easy read leaflet about source isolation.

Scan the QR code to read it.



wash hands



Good hand washing is important to stop the infection spreading to other people.

monitor



Your doctors and nurses will monitor you

feel better



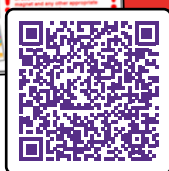
Most people start to feel better after just a few days of antibiotics.

ask



If you have any questions, you can ask the staff.

hospital passport



If you have a Learning Disability or Autism diagnosis please complete a Health Passport and return it to the Learning Disability and Autism team on:

**leadsth-tr.lidautism
@nhs.net**

easy read leaflets



We have other easy reads to support you.

Scan this QR code to see our range of easy read leaflets.

