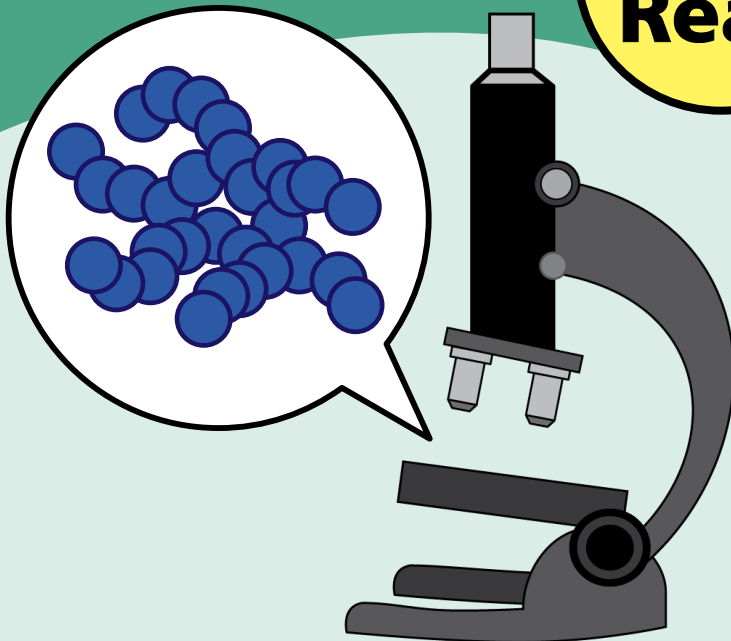


Group A Streptococcus (Strep A)

Information for patients,
carers and relatives

**Easy
Read**



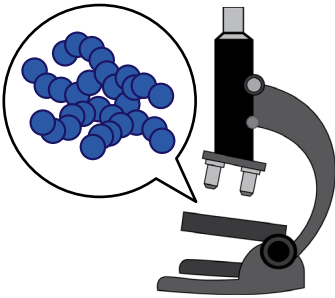
easy read



This booklet uses easy words and pictures.

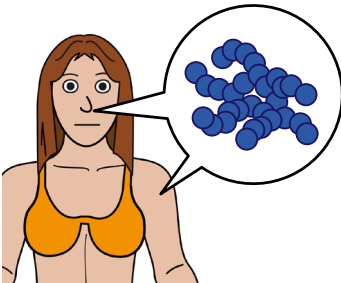
You might want to ask someone to help you read it.

Strep A



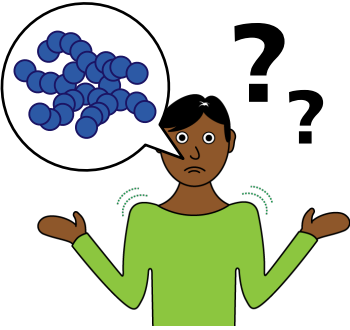
Group A Streptococcus (Strep A) is a bacteria or germ.

on skin or inside body



It can live on your skin or inside your body.

do not know



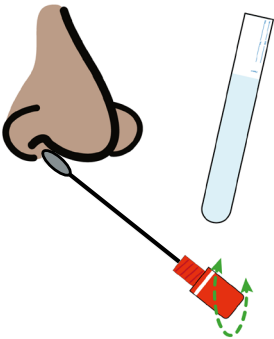
Some people have Strep A and do not know it is there.

poorly



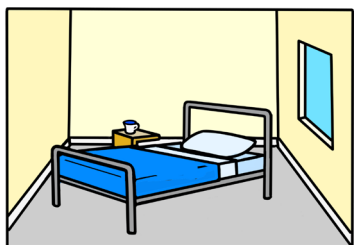
If you are poorly and we are not sure why, staff might test you for Strep A.

swab

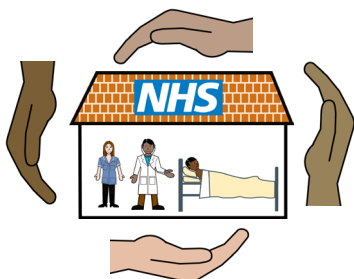


You will have a swab taken from a wound or your throat or somewhere else.

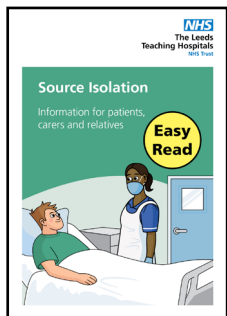
side room



safe



source isolation



If your test is positive,
you have Strep A.

You will move to a side
room or a separate area
on the ward.

This is to keep you and
everyone in hospital
safe.

And help stop the spread
of infections.

This is called Source
Isolation. We have a
leaflet about this.

Scan the
QR code
to read it.



gloves and aprons



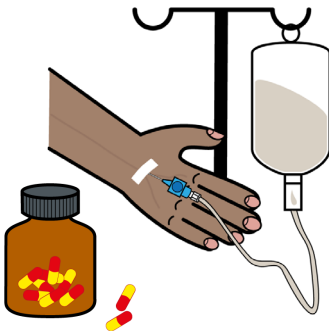
Staff may need to wear gloves and aprons when caring for you.

wash hands



You and your visitors must wash your hands regularly.

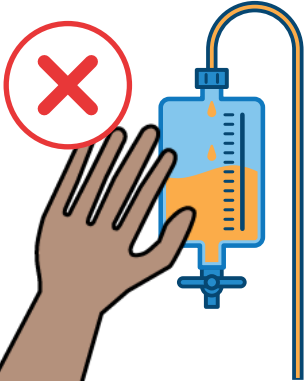
antibiotics



Sometimes you might have antibiotics to treat the infection.

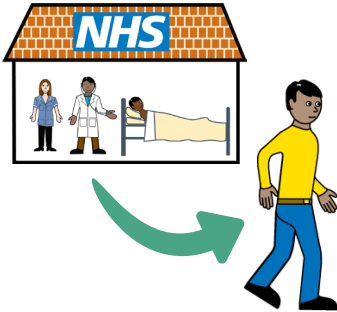
Sometimes you do not need any treatment at all.

do not touch



Do not touch any equipment, drips, catheters or lines attached to you.

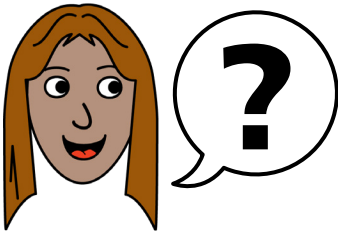
leave hospital



Your doctor or nurse will tell you when you can leave hospital.

Having Strep A should not delay this.

ask



If you have any questions, you can ask the staff.

hospital passport



If you have a Learning Disability or Autism diagnosis please complete a Health Passport and return it to the Learning Disability and Autism team on:

**leedsth-tr.lidautism
@nhs.net**



© The Leeds Teaching Hospitals NHS Trust • 1st edition Ver 1.0
Developed by: The Infection Prevention Team.
All images / Resources Copyright © LYPFT easyonthei
Produced by: Medical Illustration Services • MID code: M20231107_006/DG

LN005739
Publication date
11 / 2023
Review date
11 / 2026