

Grommets

Information for patients,
carers and relatives

**Easy
Read**



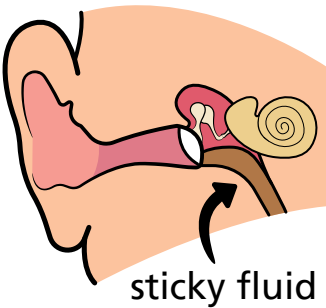
easy read



This booklet uses easy words and pictures.

You might want to ask someone to help you read it.

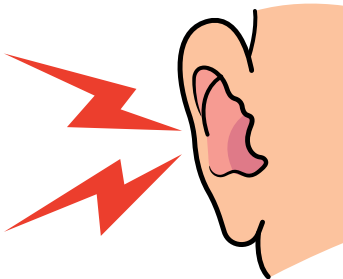
glue ear



Sometimes people have a build up of sticky fluid behind their ear drum.

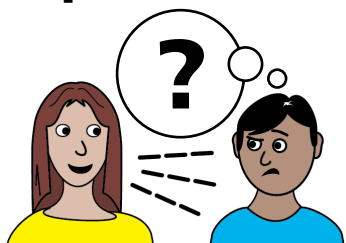
This is called glue ear.

pressure and pain



This can cause pressure and pain.

hearing problems



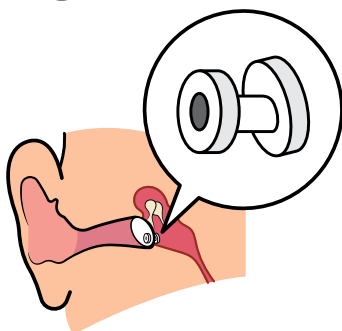
Glue ear can also cause hearing problems.

help



Doctors want to help by putting in grommets.

grommets



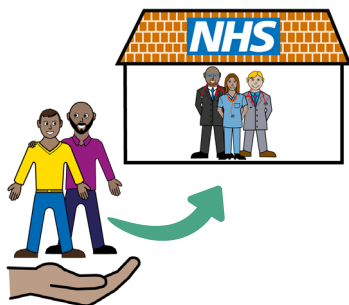
Grommets are tiny tubes that go into the ear drum to release the pressure.

hospital



This is an operation and done in hospital.

support



You can bring someone with you for support.

anaesthetic



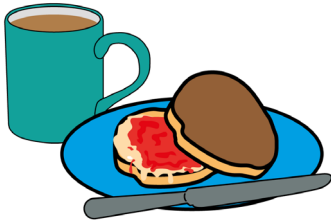
You will need an anaesthetic.

recovery



After the operation you will go to recovery.

eat and drink



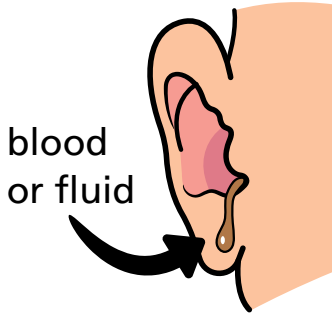
The nurses will get you something to eat and drink after an hour.

support going to toilet



They will help you go to the toilet if you need to.

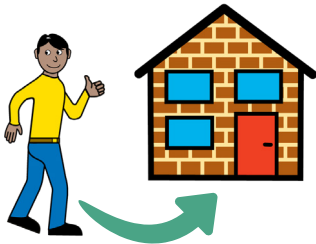
ears leak



You may have some blood or fluid leaking from your ear afterwards.

This is ok.

go home



When you are ready you can go home.

look after your ears



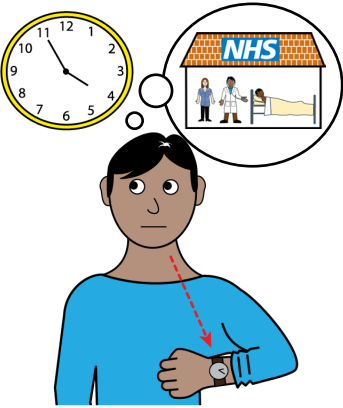
Doctors and nurses will tell you how to look after your ears at home.

keep ears dry



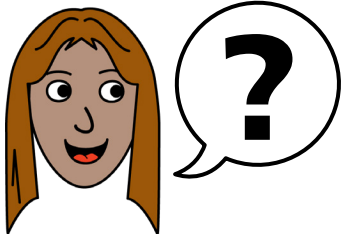
Avoid getting them wet in the bath or swimming until you have seen the doctors again.

appointment



You will be given a follow up appointment.

ask



If you have any questions, you can ask the staff.

hospital passport



If you have a Learning Disability or Autism diagnosis please complete a Health Passport and return it to the Learning Disability and Autism team on:

**leedsth-tr.ldautism
@nhs.net**



What did you think of your care?

Scan the QR code or visit bit.ly/nhsleedsfft

Your views matter



© The Leeds Teaching Hospitals NHS Trust • 1st edition Ver 1.0
Developed by: Kathleen Smith • Quality Improvement Clinician for Learning Disability and Autism. All images / Resources Copyright © LYPFT easyonthei
Produced by: Medical Illustration Services • MID code: M20231012_015/DG

LN005713
Publication date
10 / 2023
Review date
10 / 2026