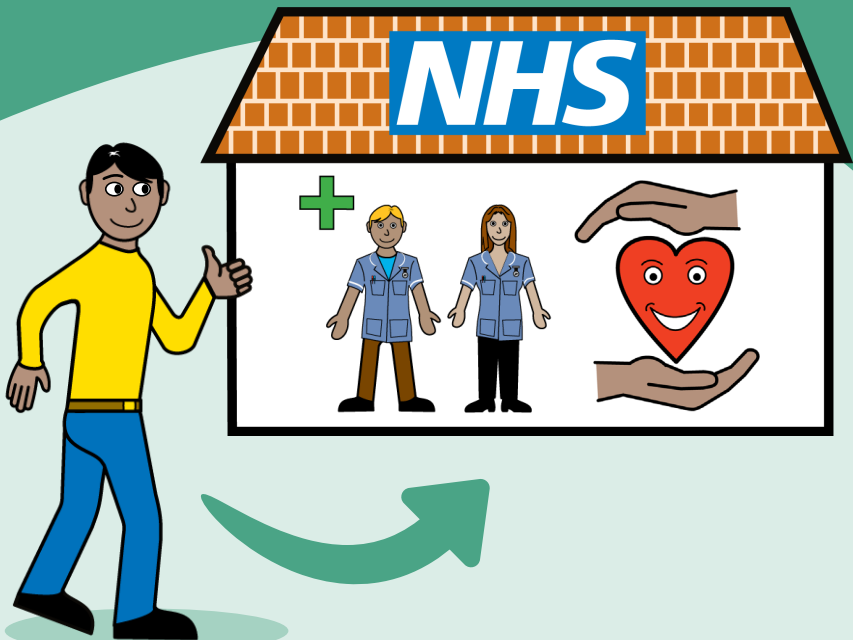


Cardiology Outpatient Appointment

**Easy
Read**

Information for patients,
carers and relatives



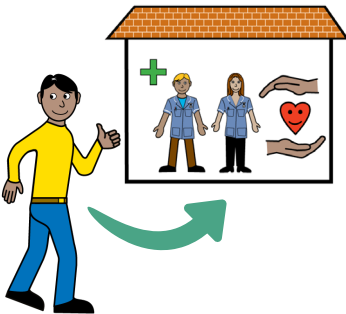
easy read



This booklet uses easy words and pictures.

You might want to ask someone to help you read it.

appointment



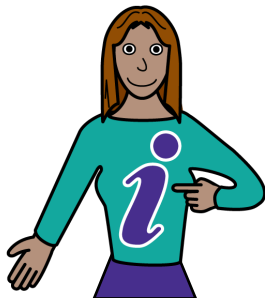
You are coming to an outpatient appointment at the hospital.

reception



You will need to check in at reception.

your information



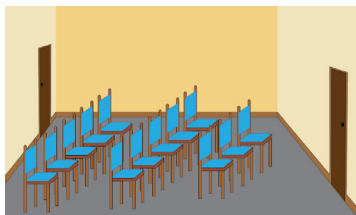
They will ask you for your name, address and date of birth.

write down



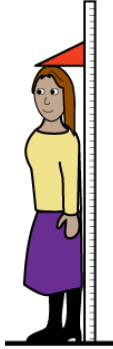
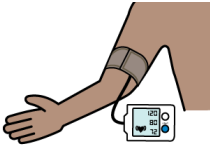
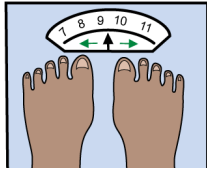
If you are a little nervous you could write these down if you're coming on your own.

waiting room



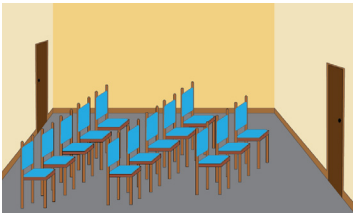
You will be asked to wait in a waiting room until the Clinician is ready to see you.

height, weight and blood pressure



Sometimes you might need to have your height and weight checked, and your blood pressure taken.

waiting room



You might need to wait in the waiting room again.

Clinician



The Clinician will call you into the room when it's your turn.

ask questions



The doctor will ask some questions about your health.

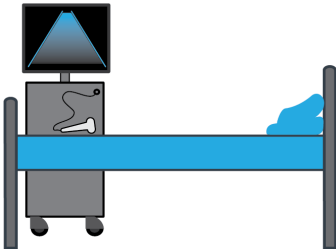
stethoscope



They might listen to your chest using a stethoscope.

This might feel cold.

scan



They will complete an echocardiogram.

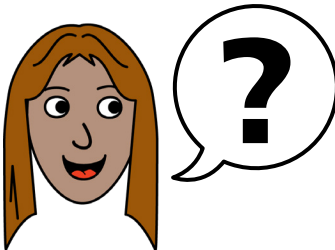
plan



accessible leaflets



ask



Once these are completed the doctor will talk to you about your treatment plan if you need one.

We have other accessible information available on the Trust website which may help understand some of the procedures mentioned.

If you have any questions, you can ask the staff.

hospital passport



If you have a Learning Disability or Autism diagnosis please complete a Health Passport and return it to the Learning Disability and Autism team on:

**leedsth-tr.lidautism
@nhs.net**



What did you think of your care?

Scan the QR code or visit bit.ly/nhsleedsfft

Your views matter



© The Leeds Teaching Hospitals NHS Trust • 1st edition Ver 1.0
Developed by: Kathleen Smith • Quality Improvement Clinician for Learning
Disability and Autism. All images / Resources Copyright © LYPFT easyonthei
Produced by: Medical Illustration Services • MID code: M20231010_013/DG

LN005710
Publication date
10 / 2023
Review date
10 / 2026