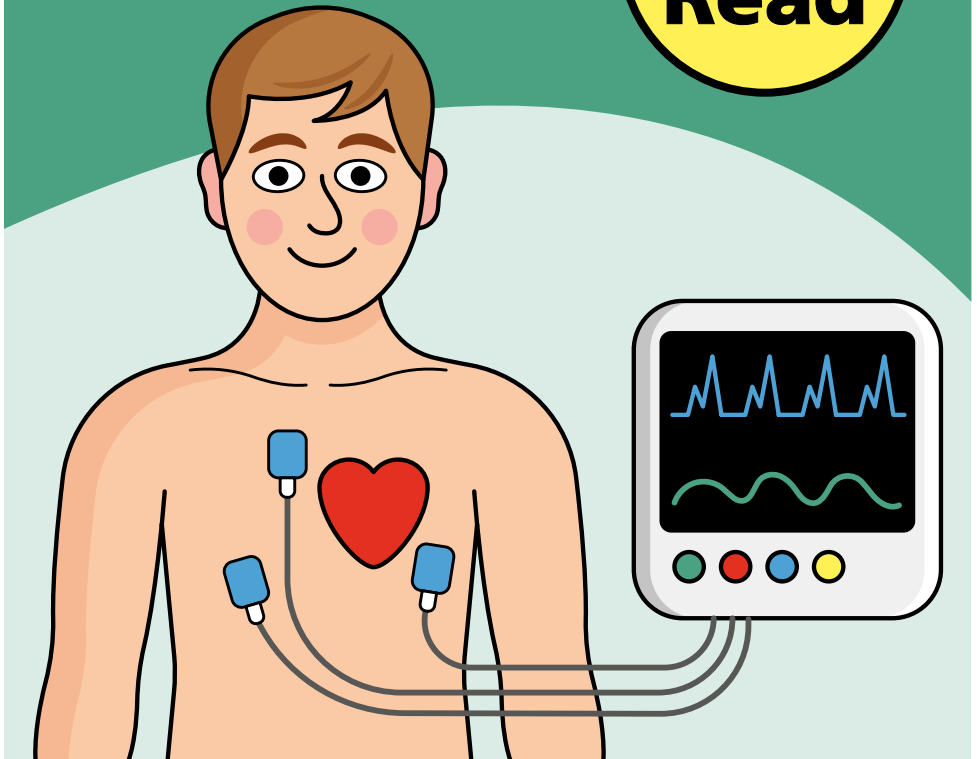


Echocardiogram (ECHO)

Information for patients,
carers and relatives

**Easy
Read**



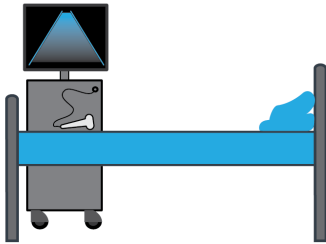
easy read



This booklet uses easy words and pictures.

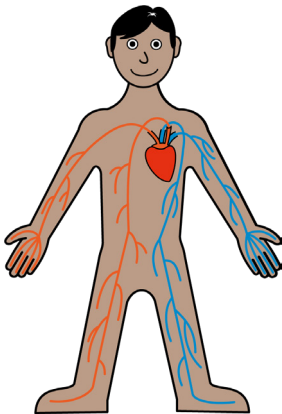
You might want to ask someone to help you read it.

echo



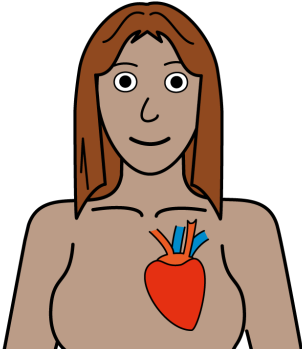
You are coming to the hospital today to have an echocardiogram, sometimes people call it an echo.

heart



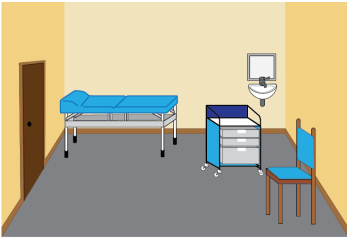
The echocardiogram looks at how well the heart is working.

heart



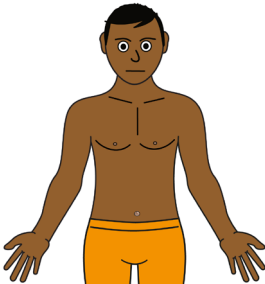
It can also tell us how healthy the heart looks.

clinic room



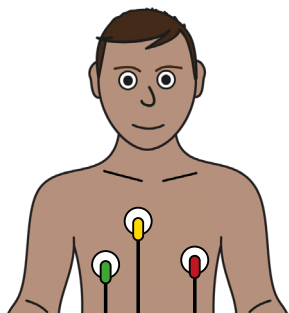
You will go into the room and be asked to lay on the bed.

take off clothes

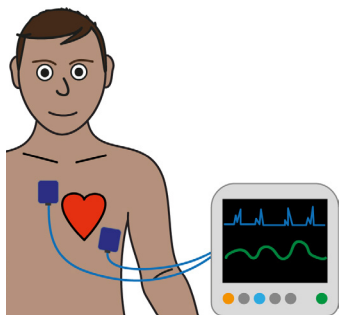


You will need to remove clothing on the top half of your body.

stickers



check heartbeat



jelly

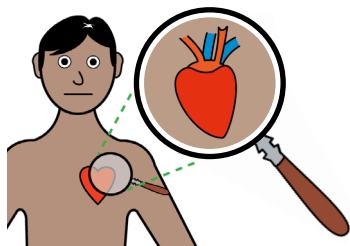


The doctor stick ECG stickers you your chest.

This allows the doctors to check your heartbeat.

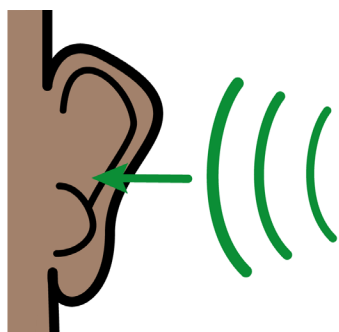
The doctor will then put some jelly on your chest.

ultrasound



They will then use a ultrasound scanner to look at your heart.

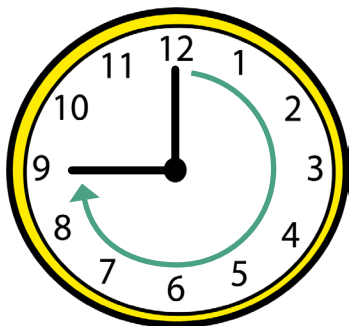
hear heart



You might be able to hear your heart beating.

This is the blood pumping through your heart.

45 minutes



The test can take up to 45 minutes.

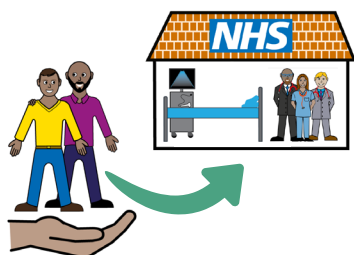
cold jelly



This will not hurt, but the jelly might feel cold.

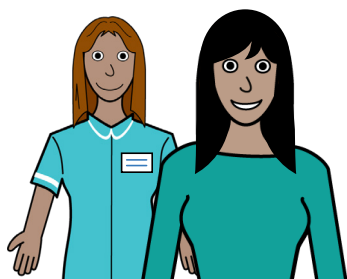
You might feel some pressure as the scanner touches you.

support going for test



You can bring someone with you to support you.

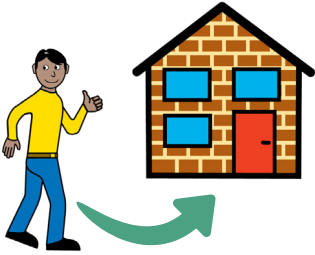
chaperone



Or you can ask for support from hospital staff.

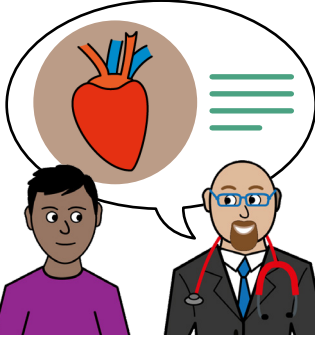
This is called a chaperone.

go home



Once the test is completed you can go home.

results



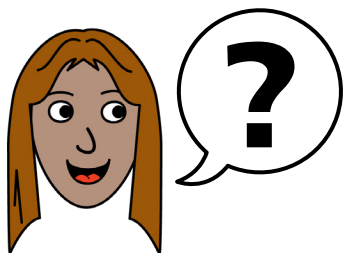
You will get your results in your next clinic appointment.

accessible leaflets



We have other accessible information available on the trust website.

ask



If you have any questions, you can ask the staff.

hospital passport



If you have a Learning Disability or Autism diagnosis please complete a Health Passport and return it to the Learning Disability and Autism team on:

leedsth-tr.laautism@nhs.net



What did you think of your care?

Scan the QR code or visit bit.ly/nhsleedsfft

Your views matter



© The Leeds Teaching Hospitals NHS Trust • 1st edition Ver 1.0
Developed by: Kathleen Smith • Quality Improvement Clinician for Learning Disability and Autism. All images / Resources Copyright © LYPFT easyonthei
Produced by: Medical Illustration Services • MID code: M20231009_024/DG

LN005709
Publication date
10 / 2023
Review date
10 / 2026