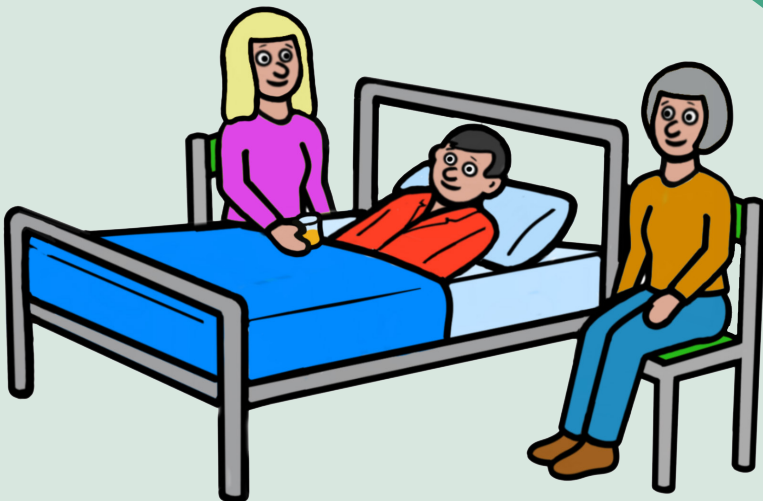
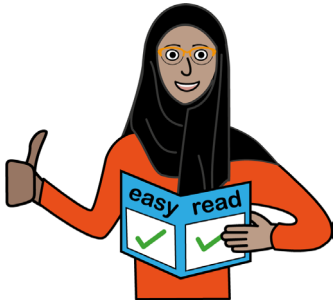


Infection Prevention advice for relatives, carers and visitors to the hospital

Easy Read

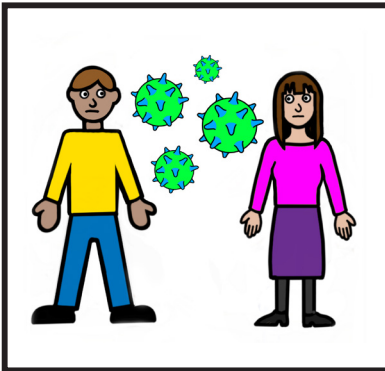


easy read

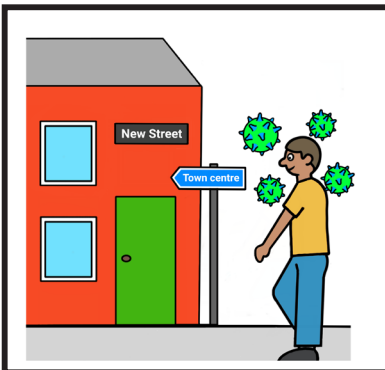


This booklet uses easy words and pictures.

You might want to ask someone to help you read it.



Some bugs, or germs, can live on our skin or in our bodies without us knowing.



So some people do not know that they have an infection that they can spread.

safe



In hospital we have to keep everyone safe.

We want to stop these bugs coming into the hospital.

hand wash



We ask everyone to wash their hands using soap and water or alcohol gel.

This helps get rid of any bugs on our skin.



Everyone must do this when entering the hospital, wards or clinics.

Or if their hands are dirty.

visitors



To help reduce the risk of infections spreading we restrict the number of visitors and visiting times.

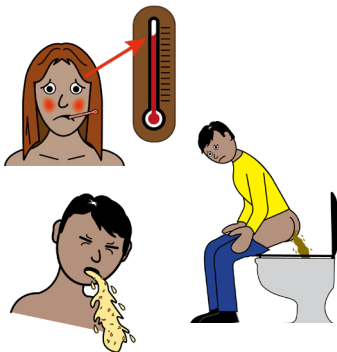
Please check with the ward before entering.



Please only bring essential items from home.

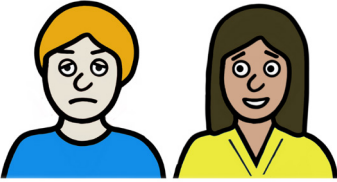
We do not allow flowers on the wards.

unwell



Do not visit the hospital if you feel unwell or think you may have an infection that could spread.

don't visit

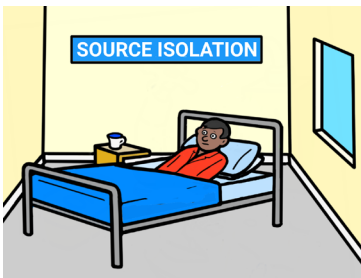


Do not visit if you have been in contact with someone who is unwell with an infection.



If a patient has an infection that can spread, they will be cared for in a separate area of the ward or side room.

SOURCE ISOLATION



This is called source isolation.

Please speak to the nurse in charge before visiting patients in source isolation.



If you are clinically vulnerable, we advise you not to visit patients in source isolation.

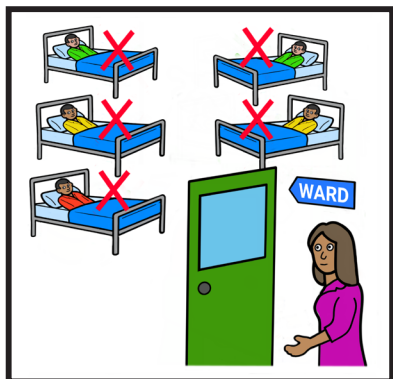


wash hands

You must wash your hands before and after visiting patients in source isolation.

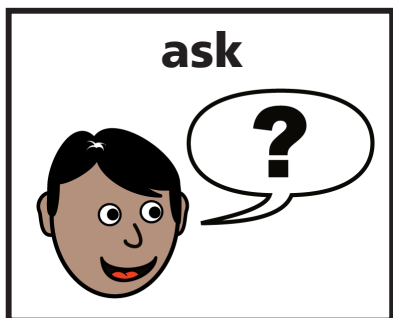


If you wish to help with care you must wear protective equipment, like gloves and aprons.



After visiting someone in source isolation, you must go straight home.

Do not visit other patients, wards or departments in the hospital.

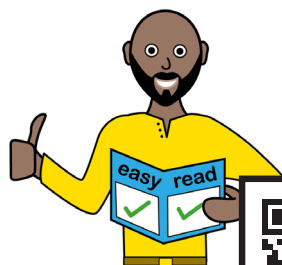


If you have any questions, you can ask the staff.



If you have a Learning Disability or Autism diagnosis please complete a Health Passport and return it to the Learning Disability and Autism team on: leedsth-tr.ldautism@nhs.net

easy read



We have other easy reads available to support you.



What did you think of your care?

Scan the QR code or visit bit.ly/nhsleedsfft

Your views matter



© The Leeds Teaching Hospitals NHS Trust • 1st edition Ver 1.0

Developed by: Halina Davidson, Project Support Nurse,
Infection Prevention and Control

All images / Resources Copyright © LYPFT easyonthei

Produced by: Medical Illustration Services • MID code: M20231003_005/NR

LN005701
Publication date
12/2023
Review date
12/2026