

What is a Chaperone?

Information for patients,
carers and relatives

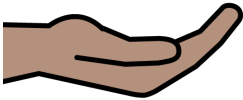
**Easy
Read**



easy read



hospital



examination



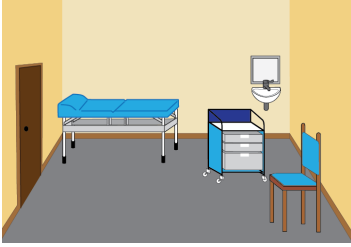
This booklet uses easy words and pictures.

You might want to ask someone to help you read it.

We want you to feel safe and supported when you come to hospital.

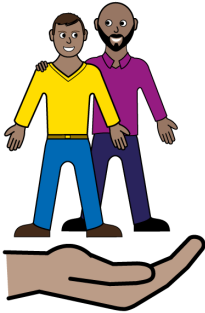
Our staff may need to assess you or give you treatment.

clinic room



They might ask you to go into a clinic room or bedspace to be examined.

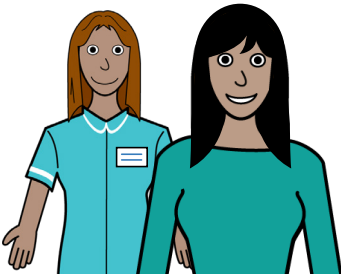
chaperone



You can ask for someone to be with you for this.

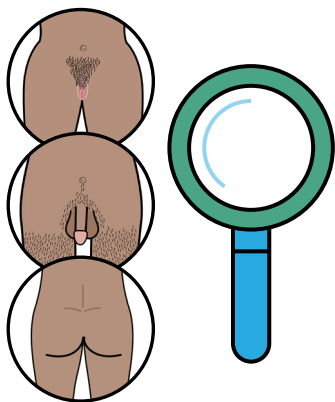
This is called a chaperone.

clinical support worker



This can be someone who usually supports you or someone who works at the hospital.

examination



If the examination is of a private area like breasts, genitals (penis or vagina) or your bottom, the hospital will always provide a member of staff as a chaperone.

supported



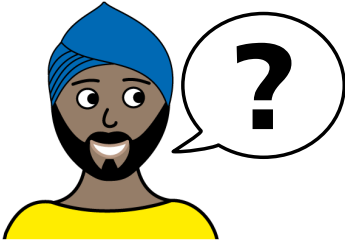
This is to help you feel safe and supported.

staff explain



Our staff will explain what will happen during your assessment or treatment.

ask questions



At any point you can ask questions if you do not understand.

hospital passport



If you have a Learning Disability or Autism diagnosis please complete a Health Passport and return it to the Learning Disability and Autism team on:

**leedsth-tr.lidautism
@nhs.net**

easy read leaflets



We have other easy reads to support you.

Scan this QR code to see our range of easy read leaflets.



What did you think of your care?

Scan the QR code or visit bit.ly/nhsleedsfft

Your views matter



© The Leeds Teaching Hospitals NHS Trust • 1st edition Ver 2.0
Developed by: Daniella Hembra - Specialist Nurse Advisor for Safeguarding
All images / Resources Copyright © LYPFT easyonthei
Produced by: Medical Illustration Services • MID code: M20230927_002/DG

LN005699
Publication date
10 / 2023
Review date
10 / 2026