

Your Heart Surgery Journey - before your operation

Information for patients



Easy Read

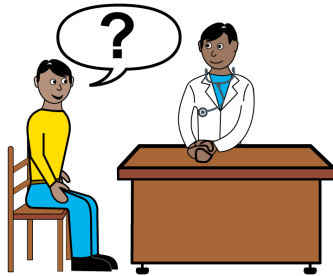
easy read



This booklet uses easy words and pictures.

You might need someone to help you understand it.

clinic



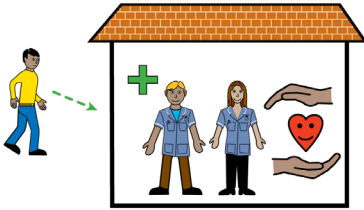
You have met with the surgeon and agreed you need an operation.

waiting list



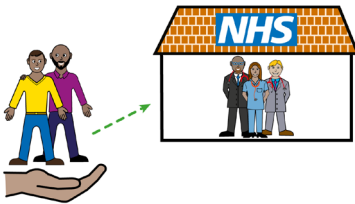
You are now on a waiting list.

appointment



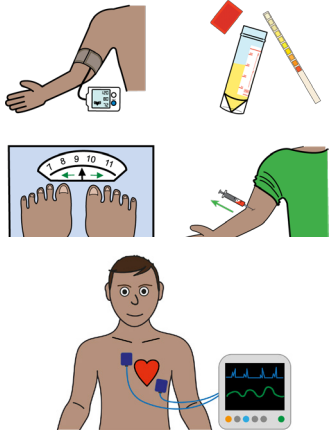
Before your operation you will be given an appointment in pre-assessment clinic.

support going to hospital

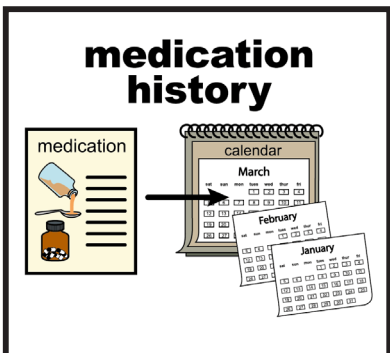
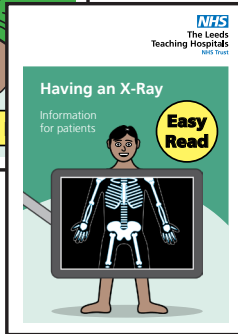
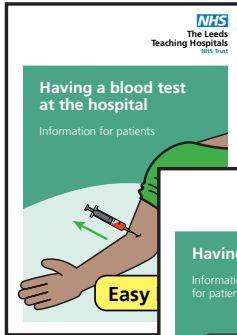


It is important you attend this appointment.

Please let us know if you need support to attend.



Here you will have some medical tests to make sure you are well enough for surgery.



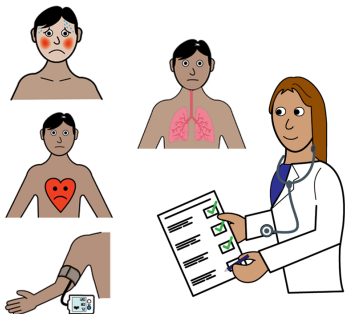
We have other easy reads explaining these tests.

You will speak the Heart Specialist Nurse.

They will complete your assessment.

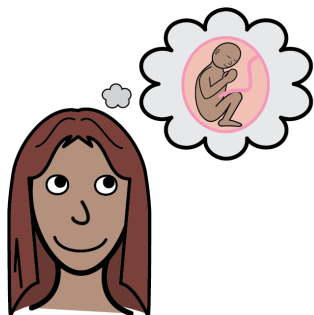
They will ask about your medications.

recent health



And your general health.

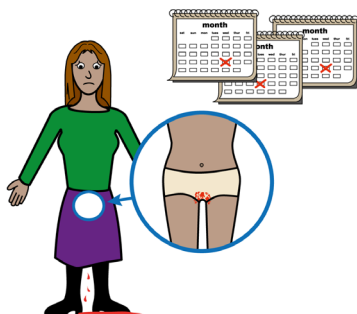
what



If you have female reproductive organs they will check if you could be pregnant.

If you could be pregnant they will check if you are.

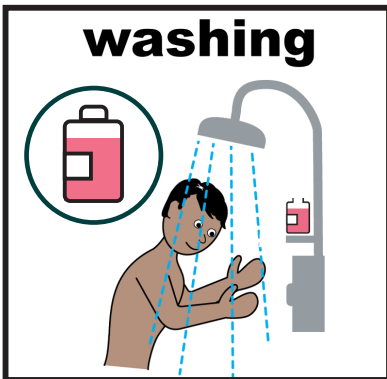
periods



And when you are due to next bleed/ have a period.

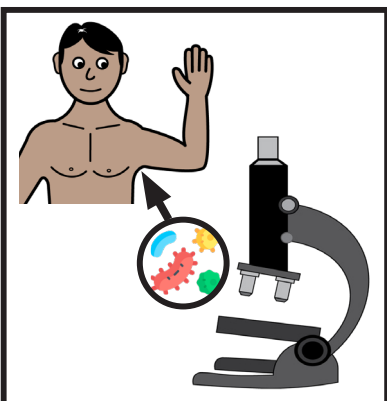


You will need to have had a recent dental check - they will check when this was.



washing

You will be given a hair and body wash to use at home, for 5 days, before you come in for your operation.



This is to get rid of any bugs living on your skin that you do not know about.



We want you to be as well as you can be before surgery.

We will ask you about smoking, drinking alcohol and exercise.

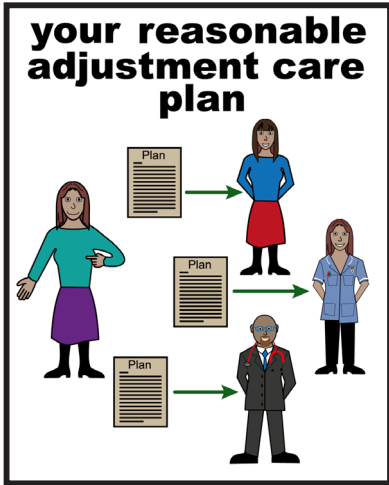


This website has lots of good information on it to help you:

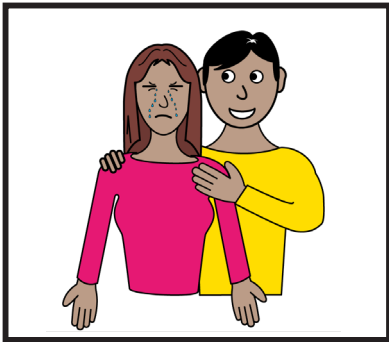
www.leedsth.nhs.uk/shape-up-for-surgery



Your Cardiac Nurse will help you make a plan.



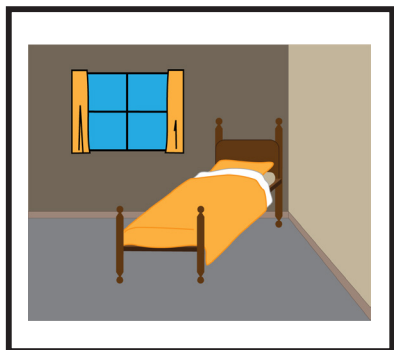
This plan will include what reasonable adjustments you might need to stay in hospital.



You might need someone to stay with you for support.



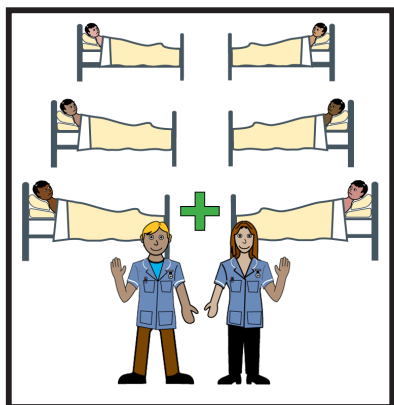
You might prefer a quiet area to wait.



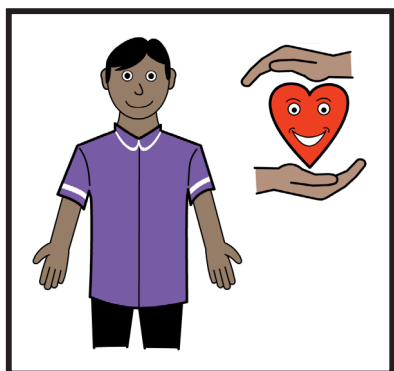
You may prefer a side room.

If a relative is staying with you.

We will always try our best to support this.



You may want to visit the ward area before admission and meet some of the staff.



You can ask the heart specialist nurse any questions and about what happens next.



If you have a Learning Disability or Autism diagnosis please think about completing a Health Passport

Please email this to the Learning Disability and Autism Team at Leeds Teaching Hospitals on Leedsth-tr.LDAutism@nhs.net

This will then be added to your medical records so staff understand you better.



What did you think of your care?

Scan the QR code or visit bit.ly/nhsleedsfft

Your views matter



© The Leeds Teaching Hospitals NHS Trust • 1st edition Ver 1.0
Developed by: Sarah Gardner, Adult Congenital Heart Disease Nurse Specialist
All images / Resources Copyright © LYPFT easyonthei
Produced by: Medical Illustration Services • MID code: M20230310_003/NR

LN005602
Publication date
06/2023
Review date
06/2026