

Keeping Safe from Abuse (Adults)

Information for
patients



**Easy
Read**



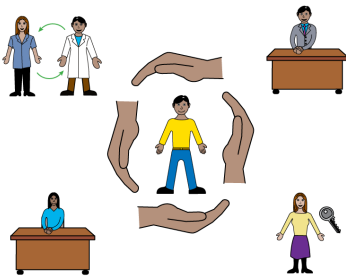
easy read



This booklet uses easy words and pictures.

You might want to ask someone to help you read it.

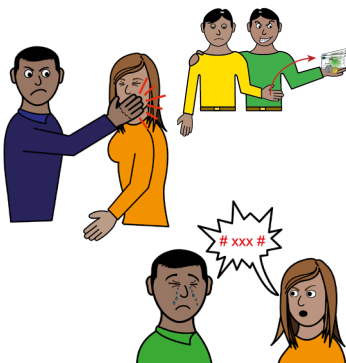
safeguarding



We want to help protect everyone from all types of abuse.

This is called Safeguarding.

abuse



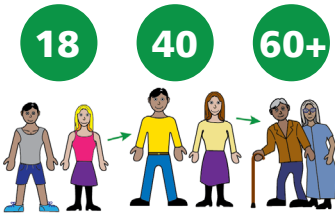
Abuse happens when someone does something to hurt, scare or upset another person. on purpose.

care



Or someone does not give you the care that you need to keep you safe.

adults



This leaflet is for adults.
All those over 18 years old.

risk



People who need support to live their life are more at risk of abuse.

other leaflets



abuse



help



Abuse comes in many forms.

We have another easy read leaflet on types of abuse.

We think no one should have to live with any type of abuse.

We want to help.

We will ask you if you want help at hospital.



We know it is hard to talk about things.

But abuse is always wrong and we want to help stop it.

Talk to someone if you think you might be being abused.

Any member of staff at the hospital will help. They will have a Hospital name badge on.



Here is a list of places and people you can talk to for help:

ambulance



If anyone is hurt and it is life threatening call **999**.

If it is not life threatening but someone is still hurt, call **111**.

police



If you think a crime has been committed call the police:

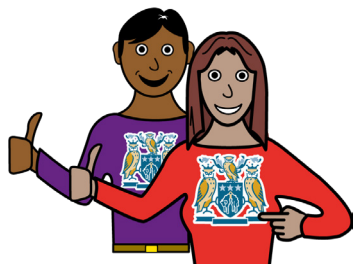
999 in an emergency.

101 if not an emergency or you are not sure.

care for you



adult social care



write number



Talk to any professional or support worker helping you that you trust.

If you are worried that this is the person hurting you, tell another professional.

Your local adult social care team will have a safeguarding person that will be able to help.

In Leeds their number is: **0113 222 4401.**

If you are from outside of Leeds you can write your local number here:



What did you think of your care?

Scan the QR code or visit bit.ly/nhsleedsfft

Your views matter



© The Leeds Teaching Hospitals NHS Trust • 1st edition Ver 1.0
Developed by: Daniella Hembra - Specialist Nurse Advisor for Safeguarding Adults. All images / Resources Copyright © LYPFT easyonthei
Produced by: Medical Illustration Services • MID code: M20230309_015/DG

LN005601
Publication date
09 / 2023
Review date
09 / 2026