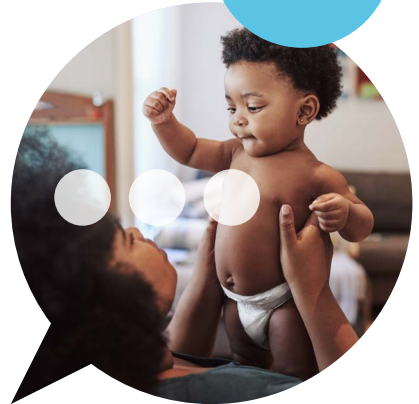


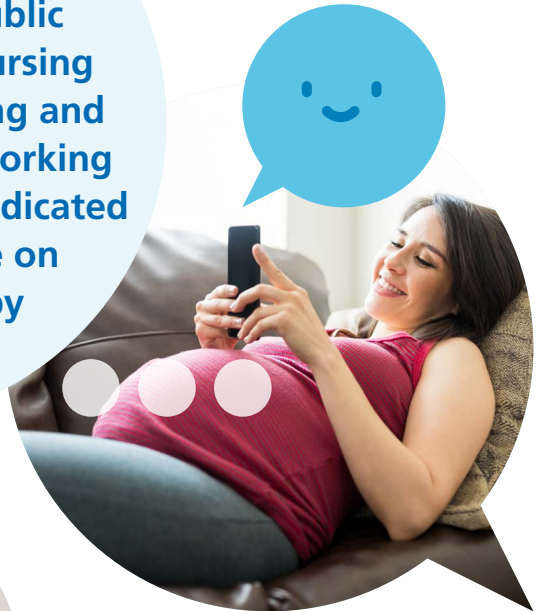
The logo for 'Babybubble Leeds' features the text 'Babybubble Leeds' in a light blue, rounded, sans-serif font. The text is arranged in a curve around a large, light blue speech bubble with a simple smiley face. Several smaller, light blue circles of varying sizes are scattered around the main speech bubble.

We would like to invite you to join Baby Bubble Leeds, a closed Facebook group if you are pregnant and having care with Leeds Teaching Hospital's Maternity service.



- Be in a small group with others throughout your pregnancy to becoming a new parent.
- Get expert advice from professionals working in Leeds.
- Ask questions and share information in a safe space.

Leeds Teaching Hospitals Midwifery Service and 0-19 Public Health Integrated Nursing Service (Health Visiting and School Nursing) are working together to provide dedicated support and advice on all questions baby related.



Scan the QR code and complete the sign-up form to join today



If you have any concerns about your pregnancy, baby or related health worries about yourself contact your community midwife or call your named 0-19 Specialist Public Health Nurse (Health Visitor).

Baby Bubble Leeds is a partnership between:

Leeds Community Healthcare NHS Trust and Leeds Teaching Hospitals Trust

www.leedscommunityhealthcare.nhs.uk/babybubble