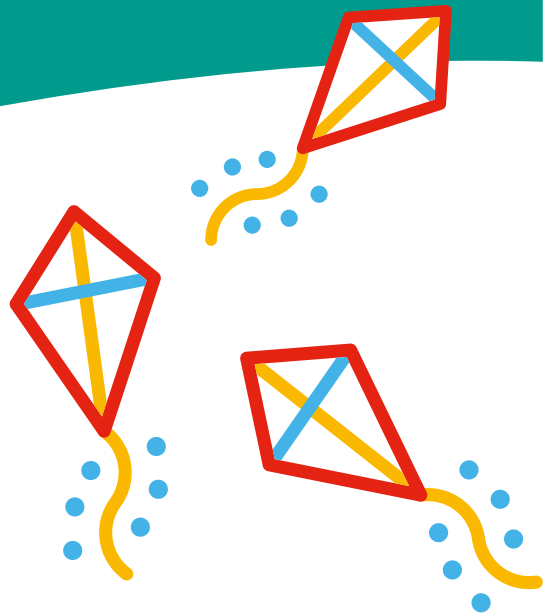


Children's Complex Care Team

Information for patients and families



leeds children's
hospital

caring about children

The complex care team at Leeds Children's Hospital was set up in 2022 aiming to improve the experience of children and families with complex needs whilst in hospital.

What we aim to do

- Get to know the child/ young person and their family so we can better understand their needs.
- Start discharge planning early on to try and reduce time spent in hospital.
- Improve coordination and communication between Leeds Children's Hospital, various hospital and community teams, and other agencies such as Social Care.

Referral criteria

- Any child with two or more systems affected and a length of stay of 14 days or longer.
- Children with one system of involvement may be referred if length of stay exceeds 30 days.
- Children on long-term ventilation.

What we do and how can we help?

Our team already has a wealth of contacts in Leeds, West Yorkshire and beyond! We can provide advice and information whilst in hospital and refer you on to continued support after discharge. A lot of our patients and families can spend a long time in hospital which can be very difficult, we are here to support you in hospital and during the transition back home. We can signpost you to agencies and charities that can support you both emotionally and financially.

Discharge planning

We will start discharge planning from early on in your admission as medically complex children often have prolonged stays in hospital, sometimes longer than medically necessary.

Early engagement and planning will enable us to put in referrals to other agencies and keep community teams updated and aware of any changes in your child's care.

You and your child can attend these meetings to ensure that your voice is heard and both you and your child's needs and priorities appreciated by professionals involved and be kept updated with discharge plans. By addressing any worries and concerns you may have about going home early on, we can hopefully minimise any delays in your child's discharge.

You can help us in this process by giving us as much information as possible about your child's condition and needs. We will use a questionnaire to aid this information gathering and will ask for the names of any other professionals involved so we can keep them updated whilst your child is in hospital.

Meet the complex care team

Dr Archana Soman:

Archana has been a consultant in paediatric palliative medicine and medical complexity at LTH since July 2022 and leads the West Yorkshire Specialist Palliative Care Team. Before this, she was a consultant in paediatric palliative medicine at Sheffield Children's Hospital.

Jenny Mallows, Lead Nurse:

Jenny has worked at Leeds Children's Hospital since 2005 in a variety of different roles. She will coordinate MDT's, signpost you to different services whilst in hospital and refer you on to other services for support after discharge.

Get in touch

Email: leedsth-tr.childrenscomplexcare@nhs.net

Phone: **07717 484 850**

Office: **0113 392 3169**



What did you think of your care?

Scan the QR code or visit bit.ly/nhsleedsfft

Your views matter

