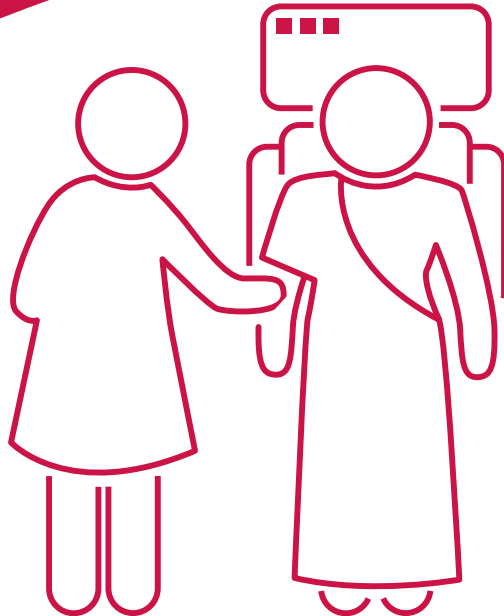


Leeds Wakefield Breast Screening programme

Information for patients

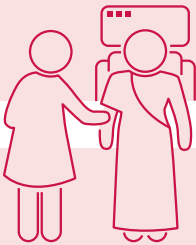


50-70 year old women registered with a GP are invited

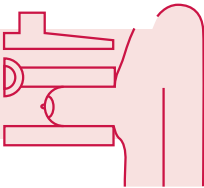
10 minutes of your time, **every three years**

Local sites in the community in a hospital setting or mobile van

We aim to **detect breast cancer early** before any signs or symptoms appear



Your mammogram will be carried out by a woman.



You will be asked to remove your clothes on your top half, including bra.

Your breasts will be placed one at a time on the machine and then pressed firmly.

You can still have a mammogram if...

- You have a disability
- You do not speak English
- You are transgender
- You are over 70
- You have breast implants



Morley Site

Breast Screening Mobile Unit, Morley Asda Car Park,
Howley Park Road, Morley, Leeds, LS27 0BP

Rothwell Site

Breast Screening Mobile Unit, Rothwell Sports Centre Car
Park, Wakefield Road, Oulton, Leeds, LS26 8EL

Pudsey Site

Breast Screening Mobile Unit, Pudsey Civic Hall Car Park,
Dawsons Corner, Pudsey, LS28 5TA

Hunslet Site

Breast Screening Mobile Unit, St George's Centre,
St George's Road, Middleton, Leeds, LS10 4UZ

Garforth Local GP's

Breast Screening, Lincoln Wing, St James's Hospital

Breast Screening Mobile Unit, Wharfedale General
Hospital, Newall Carr Road, Otley, Leeds, LS21 2LY

Trinity Walk Shopping Centre, Unit 37a, Wakefield, WF1 1QS.

Breast Screening Mobile Unit, South Kirby & Moorthorpe
Town Council Car Park, The Grove, Stockingate, South
Kirby, Pontefract, WF9 3QF

Junction 32 Outlet, Shopping Village, Glasshoughton,
Castleford, WF10 4FR

Contact us on:

0113 733 4974



What did you think of your care?

Scan the QR code or visit bit.ly/nhsleedsfft

Your views matter



© The Leeds Teaching Hospitals NHS Trust • 2nd edition (Ver 1.0)
Developed by: Clare Bridge, Principal Radiographer (Breast Services)
Produced by: Medical Illustration Services • MID code: 20240403_001/RC

LN005255
Publication date
04/2024
Review date
04/2027