

Not Safe to Swallow (Nil by Mouth)

Information for patients

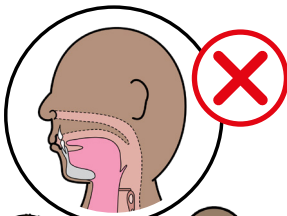
**Easy
Read**



easy read



problems swallowing



This booklet uses easy words and pictures.

You might want to ask someone to help you read it.

You are having problems swallowing food and drinks.

It is making you unwell.

The doctor has said you can not swallow anything.

no eating



You can not eat.

no drinking

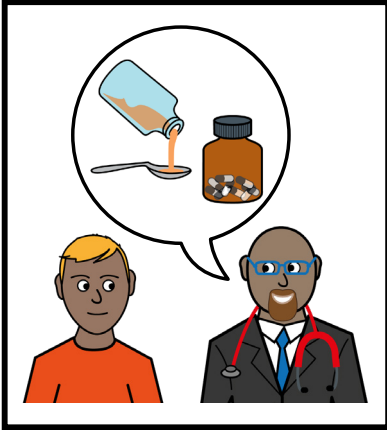


You can not drink.

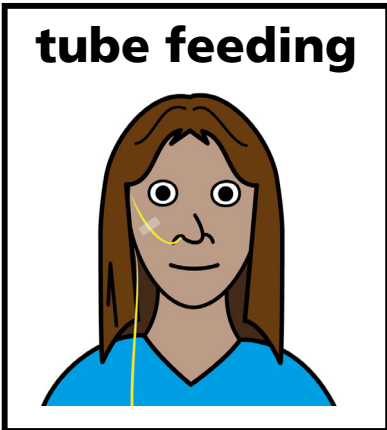
no medication



You can not take your medication.

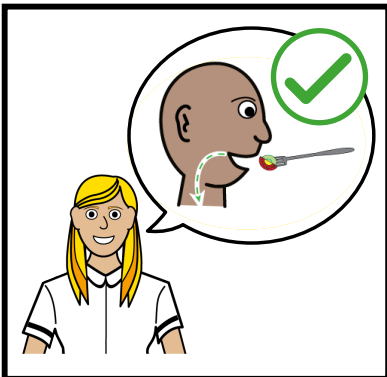


Your doctor will tell you if you need to have medicines a different way.

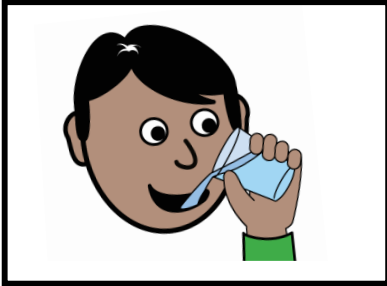


Your doctor will tell you if you need food and fluids from a tube.

Not everyone needs this.

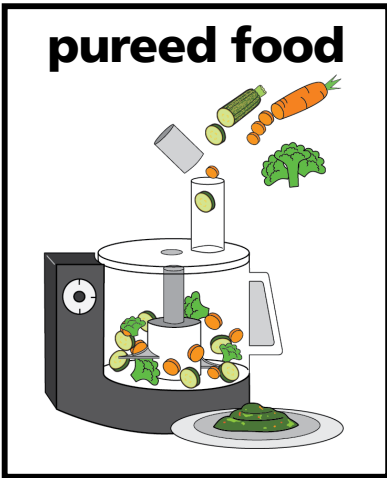


A speech therapist will tell you when it is safe to eat and drink again.



You might need thicker drinks.

Not everyone needs this.



pureed food

You may need different textured food.



advice on what to eat

Staff will give you advice on what to eat.



What did you think of your care?

Scan the QR code or visit bit.ly/nhsleedsfft

Your views matter



© The Leeds Teaching Hospitals NHS Trust • 1st edition Ver 1.0
Developed by: Natalie Lloyd • CNS for Learning Disabilities and Autism.
All images / Resources Copyright © LYPFT easyonthei
Produced by: Medical Illustration Services • MID code: M20220317_007/DG

LN005238
Publication date
02 / 2023
Review date
02 / 2026