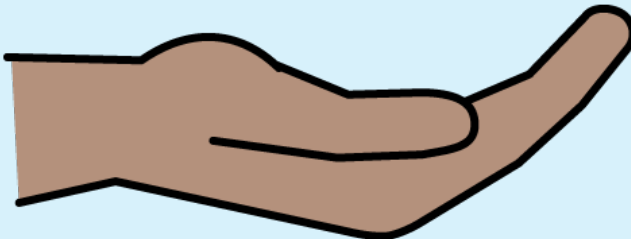
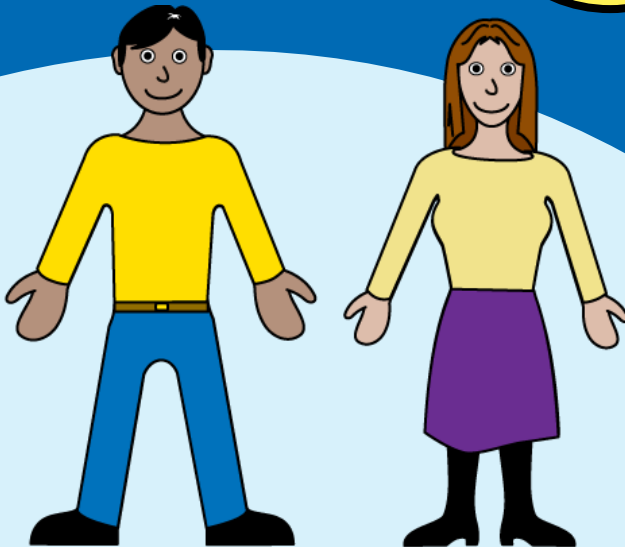


Information for Carers

**Easy
Read**



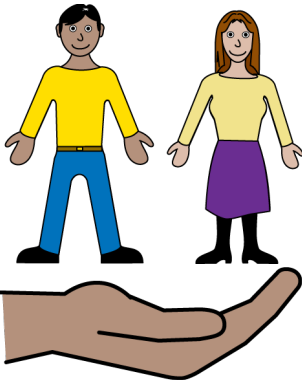
easy read



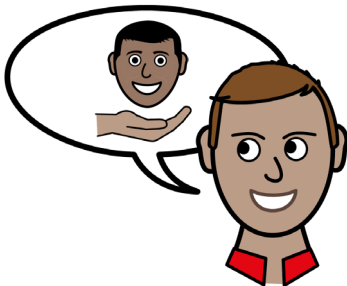
This booklet uses easy words and pictures.

You might want to ask someone to help you read it.

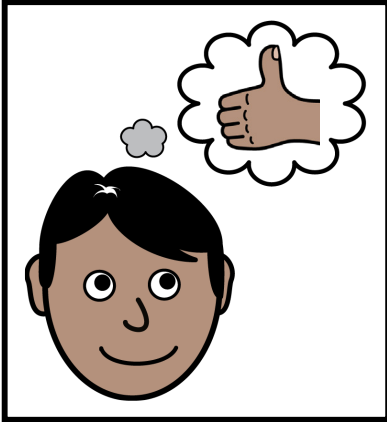
carer



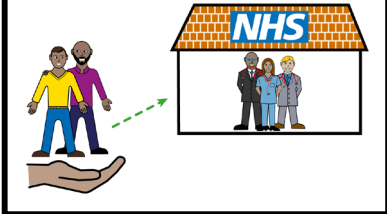
You are a carer if you help to look after someone.



We want you to tell us about the person that you care for.



best support going to hospital



Carers Conversation sheet		
1	_____	✓
2	_____	✓
3	_____	✓
4	_____	✓
5	_____	
6	_____	

A hand holding a pen is shown writing on the table, specifically marking a checkmark in the third column of the row numbered 4.

We know you can help us understand how to give them the best care and support.

We want to support you to look after the person you care for when they are in hospital.

We will write this down on a **carers conversation** sheet.

carers passport

I am a Carer

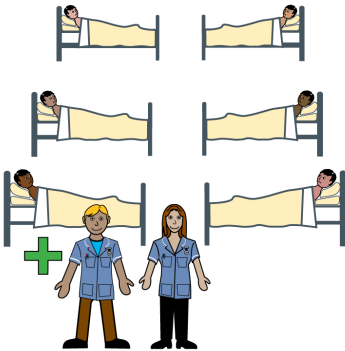
NHS
The Leeds
Teaching Hospitals
Trust

I am the main carer for a patient at this hospital.

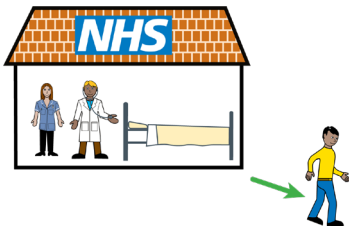
This passport is only valid with a form of ID

Version 1

ward



leave the ward



We will also give you a Carers Passport.

This is to help our staff know who you are when you are on the ward.

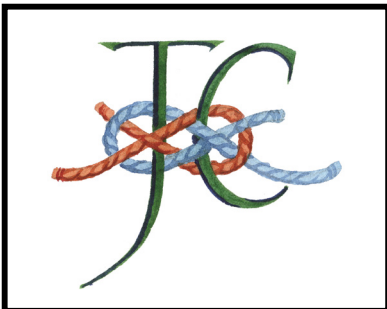
Sometimes we might need to ask you to leave the ward.



We will let you know why and when you can come back.

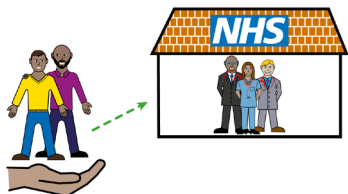


We will work with you to provide the best care.



This is the logo for **John's Campaign.**

dementia support



John's Campaign helps patient's with dementia.

The hospital supports John's Campaign.



You can find out more about John's Campaign by scanning this QR code.

carer support



Carers Leeds offers support to carers in the Leeds Teaching Hospitals NHS Trust.



You can find out more about Carers Leeds by scanning this QR code.

Carers Leeds advice line



For more information
contact the **Carers Leeds
Advice Line:**

Telephone:

0113 380 4300

(Mon - Thur - 9am - 5pm,
Friday - 9am - 4:30pm)

Email: **advice@carers
leeds.org.uk**



What did you think of your care?

Scan the QR code or visit bit.ly/nhsleedsfft

Your views matter



© The Leeds Teaching Hospitals NHS Trust • 1st edition Ver 1.0

Developed by: Jenny Gaunt • Project Manager Patient, Carer & Public
Involvement. All images / Resources Copyright © LYPFT easyonthei

Produced by: Medical Illustration Services • MID code: M20220308_002/DG

LN005229

Publication date
03 / 2023

Review date
03 / 2026