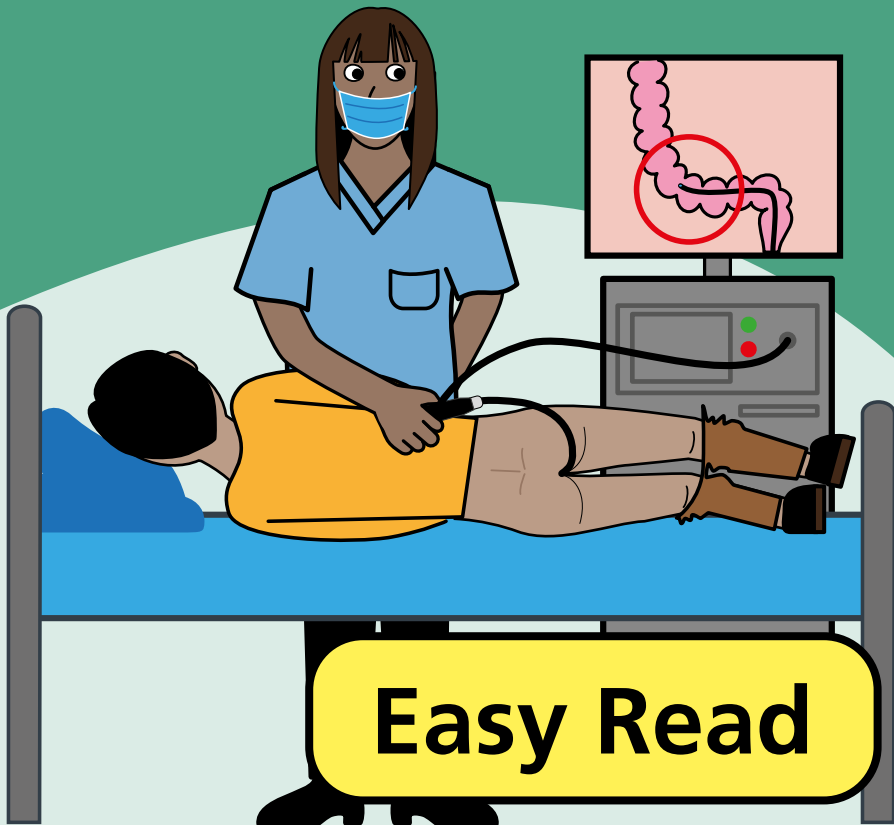


What is a flexible sigmoidoscopy

Information for patients



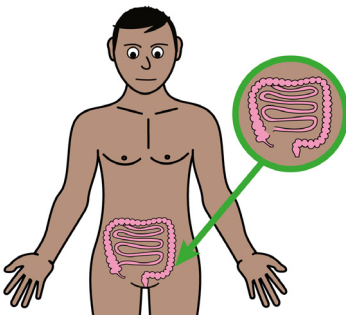
easy read



This booklet uses easy words and pictures.

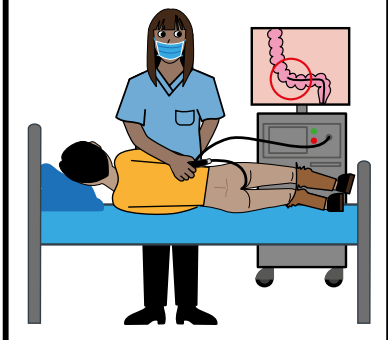
You might want to ask someone to help you read it.

bowel



The doctor would like to look inside your bowel.

sigmoidoscopy



You can have a flexible sigmoidoscopy.

Phosphate enema



The nurse will give you
an enema.

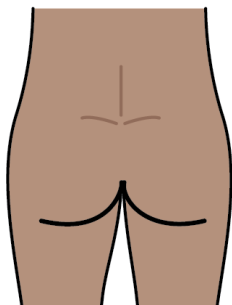


This will make you poo.



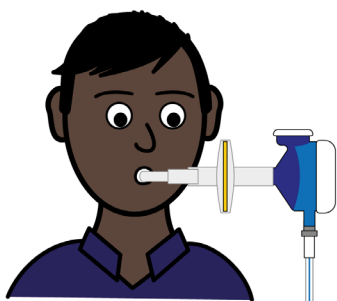
The hospital staff can
use a camera on the end
of a long bendy tube.

bottom

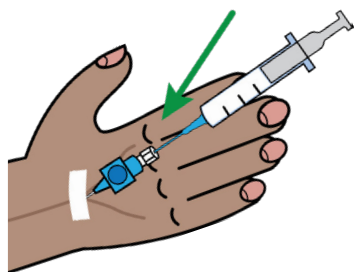


This bendy tube goes into your bottom.

**entonox
mouth piece**

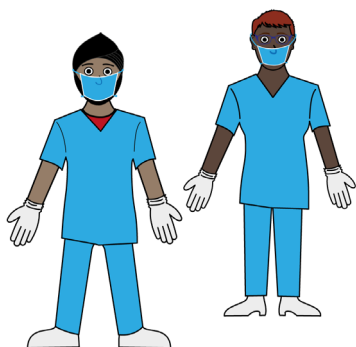


You might use gas and air to help you feel comfortable.



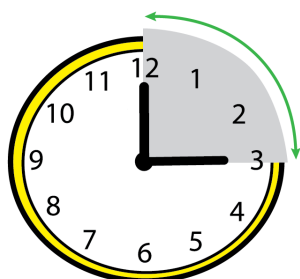
You might have medicine to help you relax.

endoscopist



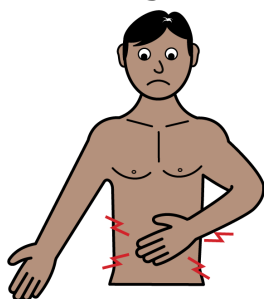
Your endoscopist will talk to you about this.

15 minutes

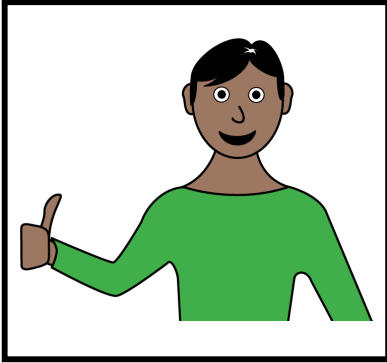


The test will take about 15 minutes.

tummy ache



The test might make you pass wind (trump).



That is ok and will help with tummy ache.

feeling better



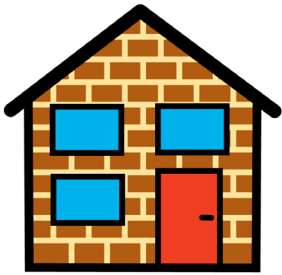
Most people are fine when they have this test.

recovery



Your endoscopist will talk to you about this test and explain the result.

home



You can then go home.



What did you think of your care?

Scan the QR code or visit bit.ly/nhsleedsfft

Your views matter



© The Leeds Teaching Hospitals NHS Trust • 1st edition Ver 1.0
Developed by: Shannon Berry • Sister, Abdominal Medicine and Surgery in
conjunction with the Learning disability and Autism team.
All images / Resources Copyright © LYPFT easyonthei
Produced by: Medical Illustration Services • MID code: M20210805_007/DG

LN005095

Publication date
02/2022
Review date
02/2024