

# What is a colonoscopy

Information for patients



## easy read



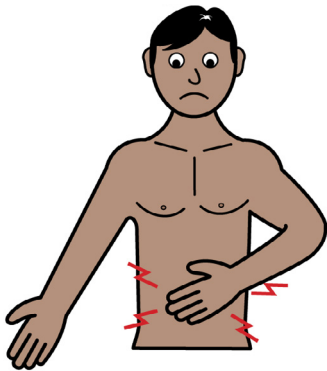
This booklet uses easy words and pictures.

You might want to ask someone to help you read it.



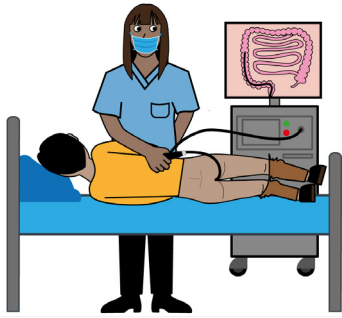
You might be going to the toilet more.

## tummy ache



You might be having tummy ache.

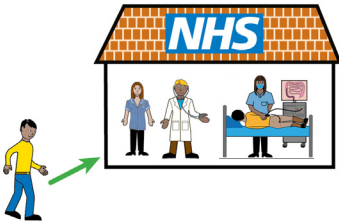
## colonoscopy



The doctor would like to look inside your bowel.

You can have a colonoscopy.

## hospital



You will come to hospital for the colonoscopy.

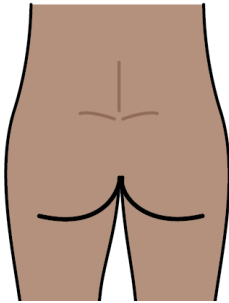
## endoscopist



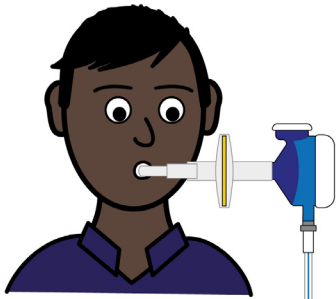
The person doing the colonoscopy is called an endoscopist.

They use a bendy tube with a camera on the end to look inside your bowel.

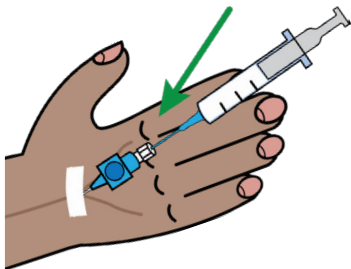
**bottom**



**entonox  
mouth piece**



**medicine**

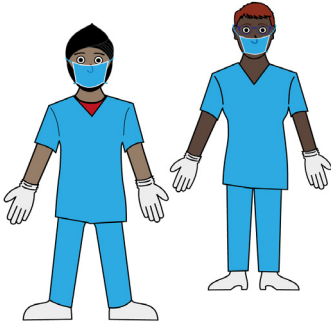


The tube goes into your bottom.

You might use gas and air to help you feel comfortable.

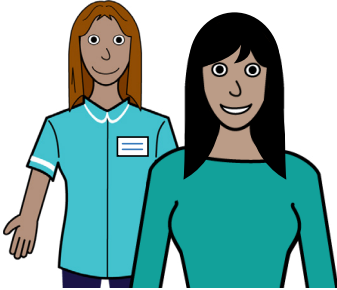
You might have medicine to help you relax.

## endoscopist



Your endoscopist will talk to you about this and support you to feel comfortable.

## chaperone

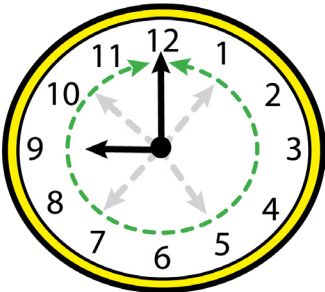


You will have a chaperone with you.

Scan here for easy read information on chaperones.

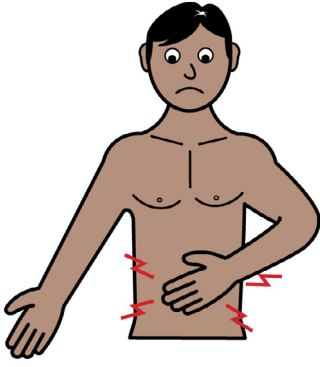


## 1 hour



The test will take about 1 hour.

## tummy ache



The test might make you pass wind (trump).



That is ok and will help with tummy ache.

## recovery



You will go to an area to recover after the test.

You will be offered something to eat and drink.

## endoscopist



Your endoscopist will talk to you about this test and explain the result.

## feeling better



Most people are fine when they have this test.

## hospital passport



If you have a Learning Disability or Autism diagnosis please send your health passport to the Learning Disability and Autism Team:

**leedsth-tr.lidautism@nhs.net**

## easy read leaflets



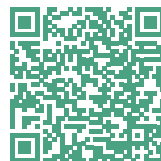
We have other easy reads to support you. Scan this QR code to see our range of easy read leaflets.



**What did you think of your care?**

Scan the QR code or visit [bit.ly/nhsleedsfft](https://bit.ly/nhsleedsfft)

***Your views matter***



© The Leeds Teaching Hospitals NHS Trust • 2<sup>nd</sup> edition Ver 1.0  
Developed by: Shannon Berry • Sister, Abdominal Medicine and Surgery  
in conjunction with the Learning disability and Autism team  
All images / Resources Copyright © LYPFT easyonthei  
Produced by: Medical Illustration Services • MID code: M20240930\_007/DG

**LN005094**

Publication date  
12 / 2024  
Review date  
12 / 2027