

Social Transitions And
Reintegration Support



NHS

The Leeds
Teaching Hospitals
NHS Trust

Social **T**ransitions **A**nd **R**eintegration **S**upport

Social Integration

after a Cancer Diagnosis

We have **NOW** started recruitment to our
S.T.A.R.S Study. ***WE NEED YOUR HELP!***

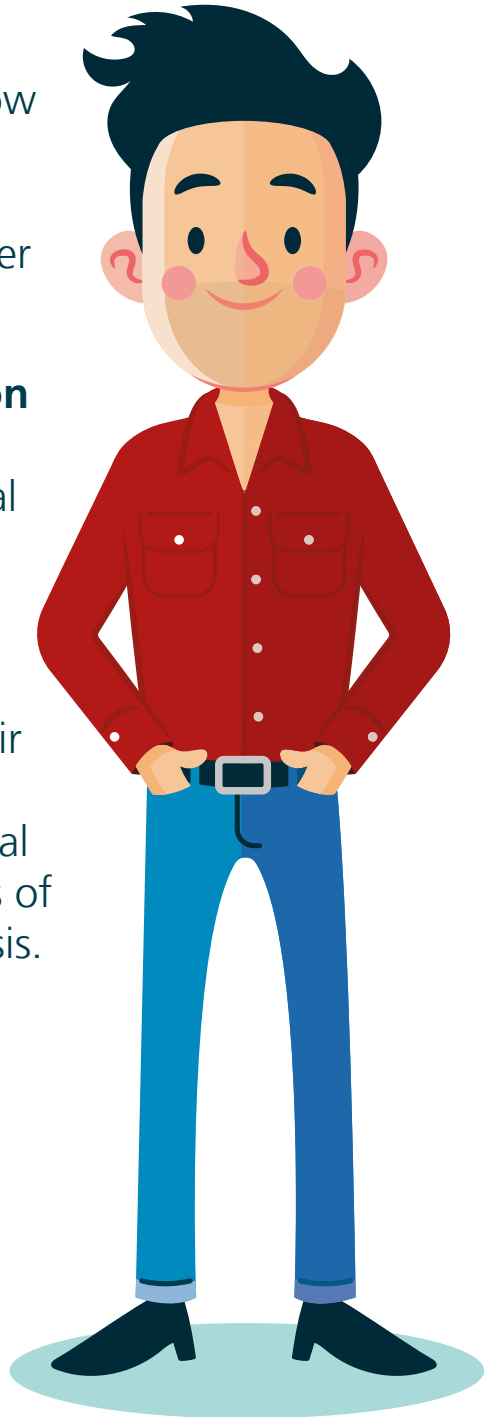


We want to understand how the **Social Integration** of teenagers and young adults (TYA) changes after a cancer diagnosis.

Through **Social Integration** we mean achieving a new sense of personal and social 'normality' following a cancer diagnosis.

This includes young people's feelings about their employment, education, social networks, and general satisfaction with all aspects of their life after their diagnosis.

If you meet any of the criteria on the next page, please consider participating as part of Cohort 1 OR Cohort 2.



COHORT 1:

You've been recently diagnosed with cancer (10 weeks to 6 months ago)

COHORT 2:

You've finished your cancer treatment 3 to 5 years ago

AND Are aged between **16 and 39**

You are under the care of **Leeds Teaching Hospitals Trust**

You are able to speak, read, and write in English

If your diagnosis was of any of the following:

- ✓ Bladder cancer
- ✓ Bowel cancer
- ✓ Brain cancer (or any cancer of the central nervous system)
- ✓ Breast cancer
- ✓ Cancer of an unknown primary
- ✓ Head and neck cancer
- ✓ Kidney cancer
- ✓ Leukaemia (any type)
- ✓ Liver cancer
- ✓ Lung cancer
- ✓ Lymphoma (both Hodgkin's and non-Hodgkin's)
- ✓ Melanoma (Skin cancer)
- ✓ Myeloma
- ✓ Oesophagus
- ✓ Gynaecological cancer
- ✓ Pancreatic cancer
- ✓ Sarcoma (any, including osteosarcoma)
- ✓ Stomach cancer
- ✓ Testicular cancer
- ✓ Thyroid cancer

If you fit the criteria above – get in touch! (See back page)

GET IN TOUCH

If you'd like more information or would like to participate, please contact the STARS Study Team using this code:



Or give them a call:

 0113 20 67580 - Leeds

 0741 55 57668 - London

Please feel free to share this with anyone you know who might be interested!

Follow us on Twitter / Instagram
@YoungCancerLife for updates, news and discussions.



What did you think of your care?

Scan the QR code or visit bit.ly/nhsleedsfft

Your views matter



© The Leeds Teaching Hospitals NHS Trust • 1st edition Ver 1.0
Developed by: Rizwana Uddin • Data Manager
Produced by: Medical Illustration Services • MID code: M20210311_005/DG

LN005016
Publication date
05/2021
Review date
05/2024