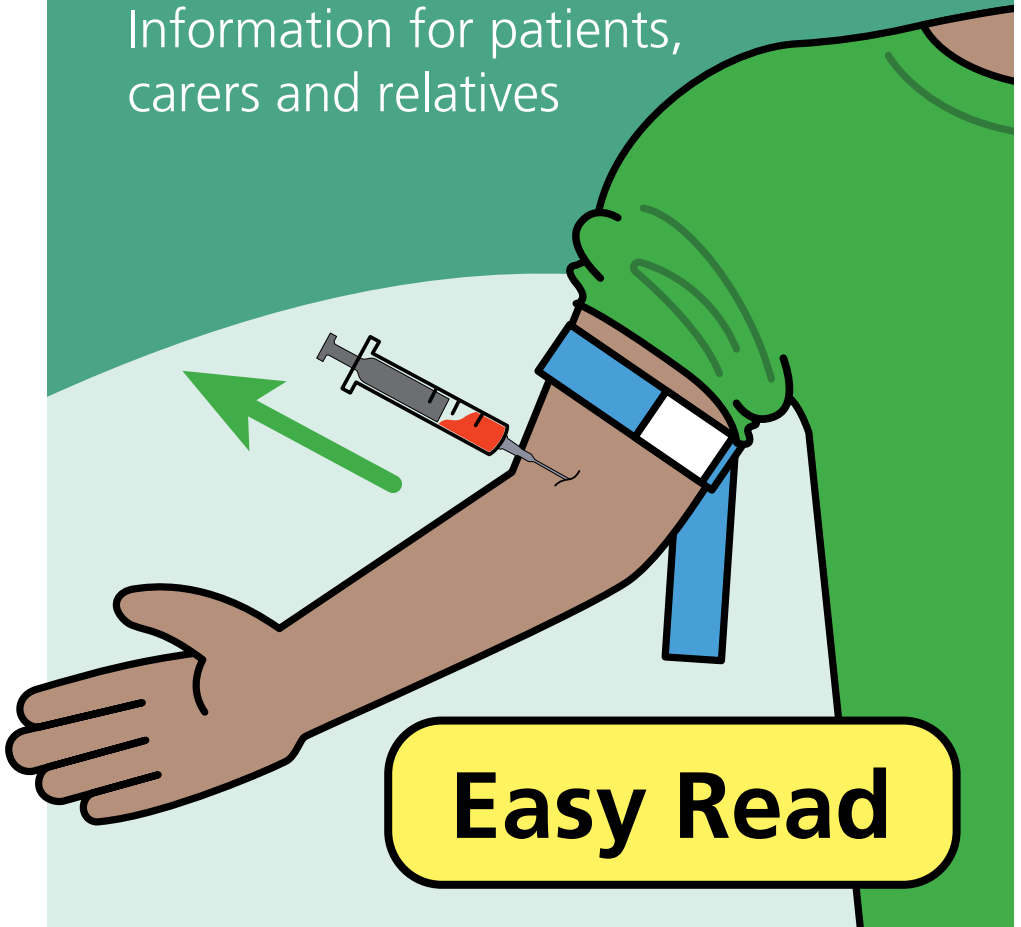


# Having a blood test at the hospital

Information for patients,  
carers and relatives



## easy read



This booklet uses easy words and pictures.

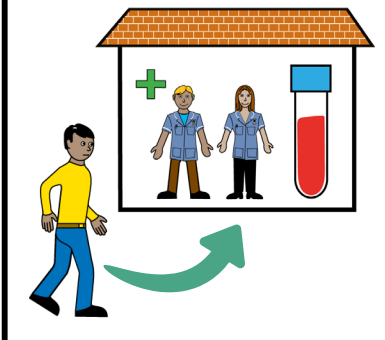
You might want to ask someone to help you read it.

## hospital



You need a blood test.

## appointment



You will go to the phlebotomy department.

## hospital staff



One of the hospital staff will help you.

All our staff will be wearing name badges.

## cream for skin



You can be offered some cream for your skin.

## reduce pain



It can numb the skin a little to reduce the pain of the blood test.

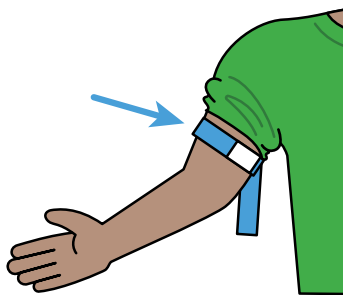
## waiting area



## distract yourself



## tourniquet



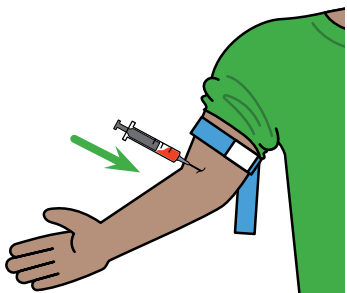
You will sit in the waiting room until it's your turn.

You can use books, iPads or toys to distract yourself during this procedure.

The nurse will then put a strap, called a tourniquet, around your arm.

This feels tight.

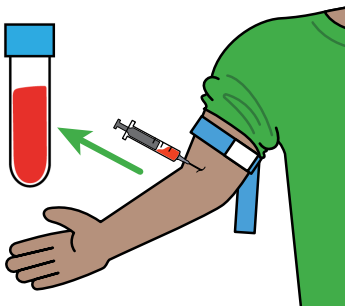
## insert needle



The nurse will insert the needle into your arm.

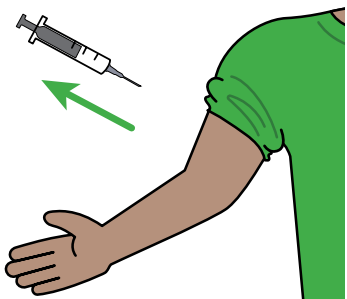
You will feel a scratch.

## blood sample



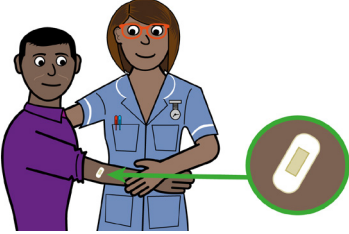
The nurse will take the blood sample from your arm.

## needle out



The nurse will take the needle out of your arm and take off the tourniquet.

## plaster on your arm



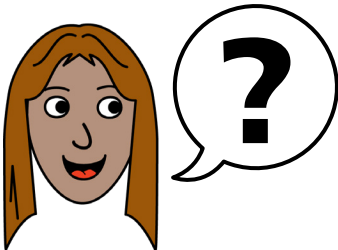
The nurse will put a small plaster where the needle went into your skin.

## test finished



Then the blood test has finished.

## ask



If you have any questions, you can ask the staff.

# hospital passport



If you have a Learning Disability or Autism diagnosis please complete a Health Passport and return it to the Learning Disability and Autism team on:

**leedsth-tr.lidautism  
@nhs.net**



© The Leeds Teaching Hospitals NHS Trust • 2<sup>nd</sup> edition Ver 1.0  
Developed by: Kathleen Smith • Quality Improvement Clinician for Learning  
Disability and Autism. All images / Resources Copyright © LYPFT easyonthei  
Produced by: Medical Illustration Services • MID code: M20231026\_014/DG

**LN004940**  
Publication date  
11 / 2023  
Review date  
11 / 2026