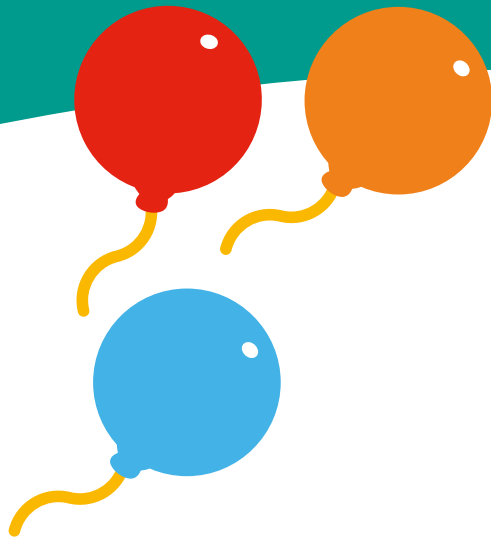


# Children's Hospices

Information for parents  
and carers



Leeds children's  
hospital

caring about children

Children's hospices provide 24 hour care and support to children and their families. They are a team of professionals made up of doctors, nurses, midwives, play specialists, care staff, complimentary therapists, counsellors, physiotherapists, music therapists and volunteers.

The teams are experienced in caring for babies, children, young people and their families who are affected by complex conditions. They can also offer support before your baby is born. They offer support from a Children's Hospice setting or their Hospice at Home service which can help you in your own home.

They offer a number of services tailored to meet the individual needs of you and your family.

*As well as nursing care they can provide:*

**Respite / Short breaks** Overnight stays as well as day care for children during term time and holidays. This can be specifically for the child or it can be stays as a family (and pets). All facilities are available for family groups.

**Emotional support** This is available to all family members including parents, grandparents and siblings. There are dedicated sibling days, events and sibling support workers.

**Play support** Support can be offered through play, music and creative therapies. Children's Hospices have play rooms, music rooms, multi-sensory rooms as well as large outdoor gardens and hydrotherapy or spa pools.

Homemade meals are provided by in-house chefs and they can accommodate any of your dietary requirements.

End of life care is also offered in all Children's Hospices or together in a home setting. Staff are experts in this area and their priority is comfort and symptom control. They offer memory making opportunities, emotional support and counselling to ensure your family feel well supported. Bereavement support is offered in many forms and will be tailored to your individual needs.

There is no charge to families for using any of the services provided by your local Children's Hospice.



**Martin House** – Wetherby.  
[www.martinhouse.org.uk](http://www.martinhouse.org.uk)



**Forget Me Not** – Huddersfield.  
[www.forgetmenotchild.co.uk](http://www.forgetmenotchild.co.uk)



**Blue Bell Wood** – Sheffield.  
[www.bluebellwood.org.uk](http://www.bluebellwood.org.uk)



**Andy's House** – Grimsby.  
[www.standrewshospice.com](http://www.standrewshospice.com)



## What did you think of your care?

Scan the QR code or visit [bit.ly/nhsleedsfft](https://bit.ly/nhsleedsfft)

*Your views matter*



© The Leeds Teaching Hospitals NHS Trust • 1st edition (Ver 1)  
Developed by: Marie Wray Fetal/Children's Cardiac Nurse Specialist  
Produced by: Medical Illustration Services • MID code: 20200902\_011/JG

LN004922  
Publication date  
11/2020  
Review date  
11/2023