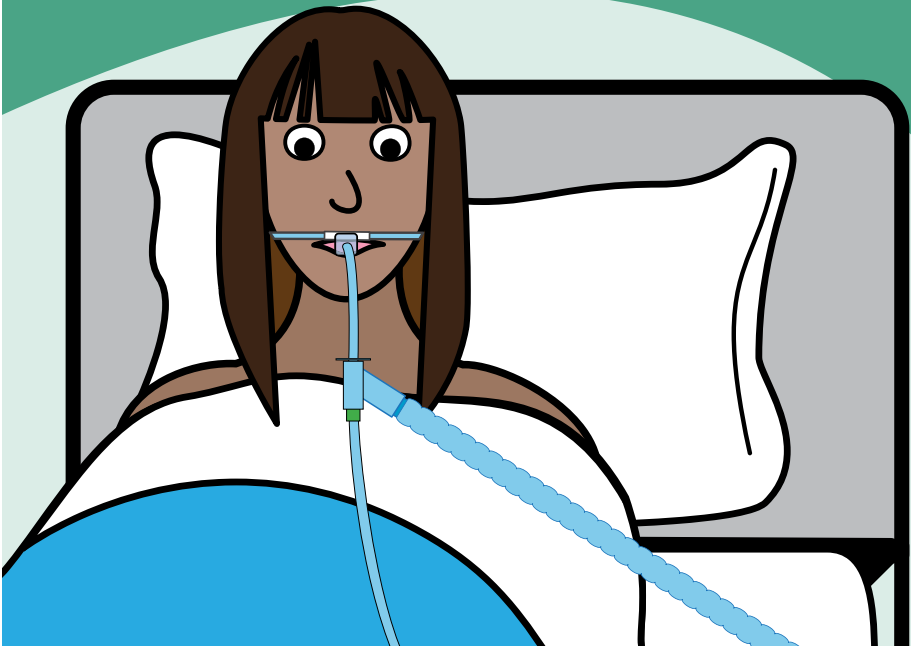


Waking up with a breathing tube in hospital

*(Sedation hold /
Endo-Tracheal Tube)*

Information for patients

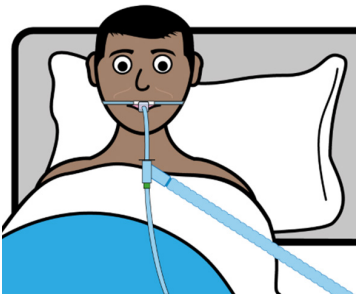
**Easy
Read**



easy read



endo tracheal tube



poorly



This booklet uses easy words and pictures.

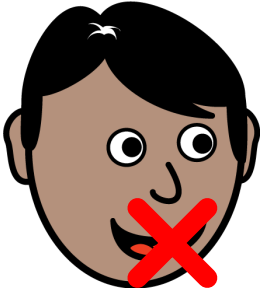
You might want to ask someone to help you read it.

There is a tube in your mouth to help you breathe.

This tube is called an endo-tracheal tube.

You have been very poorly.

can't talk



You will not be able to talk with the tube in. That is ok.

communicate



The staff on the ward will find ways to help you to communicate.

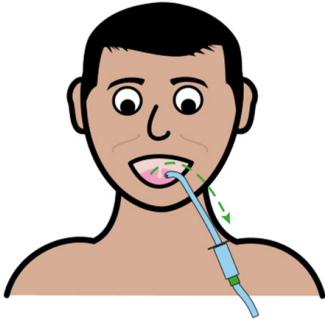
do not touch tube



Please do not touch the tube.

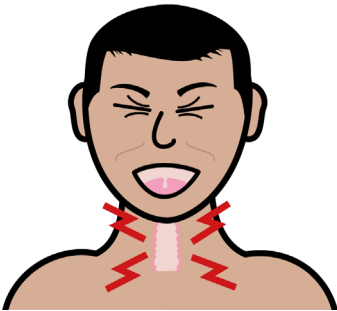
You need this tube.

remove tube



The staff will take the tube out when you do not need it any more.

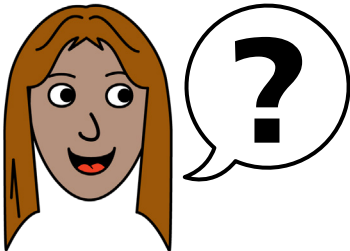
pain in throat



You might have a sore throat and a croaky voice.

This should get better.

ask

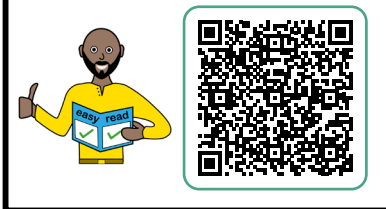


If you have any questions, you can ask the staff.

hospital passport



easy read leaflets



If you have a Learning Disability or Autism diagnosis please complete a Health Passport and return it to the Learning Disability and Autism team on:

leedsth-tr.lidautism@nhs.net

We have other easy reads to support you.

Scan this QR code to see our range of easy read leaflets.



© The Leeds Teaching Hospitals NHS Trust • 2nd edition Ver 1.0

Developed by: Alison Conyers • Lead Professional, Learning Disabilities and Autism. All images / Resources Copyright © LYPFT easyonthei

Produced by: Medical Illustration Services • MID code: M20231221_009/DG

LN004844

Publication date

01 / 2024

Review date

01 / 2027