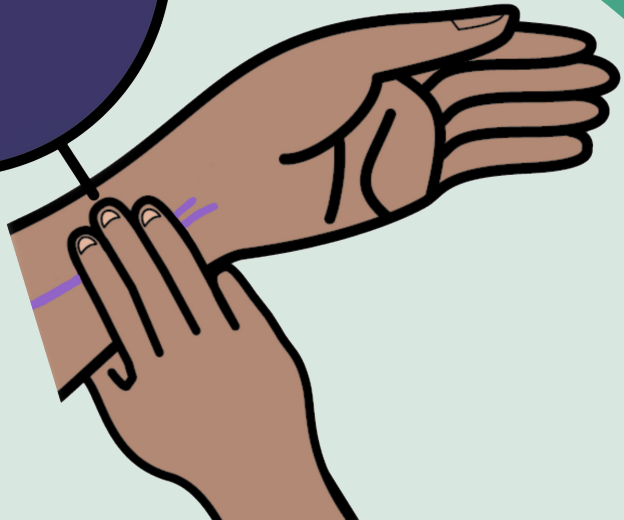


Having your pulse checked

Information for patients

Easy Read



easy read



This booklet uses easy words and pictures.

You might want to ask someone to help you read it.

hospital



Staff might want to check your pulse.

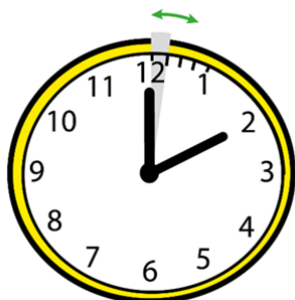
All our staff wear name badges.

healthy heart



Your pulse tells us if your heart is beating at a healthy speed.

2 minutes



It will take between one or two minutes and it doesn't hurt.

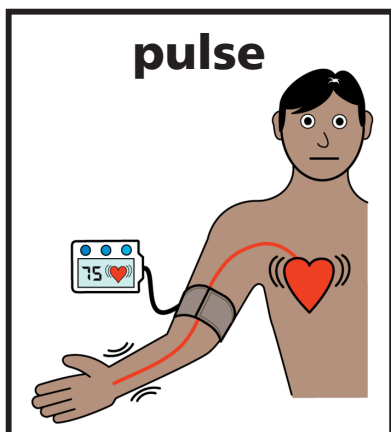
pulse



Your pulse can be checked by the nurse touching your wrist.

They can feel the blood moving in your body.

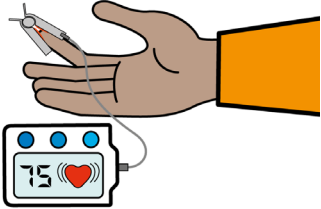
pulse



Or the nurse might check your pulse with your blood pressure.

There is another leaflet on this.

pulse oximeter



Or they may check your pulse when checking your oxygen levels.

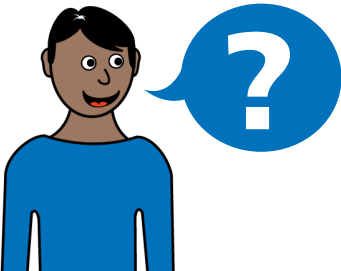
It doesn't hurt.

put in your notes



This will be recorded in your medical notes.

ask



You can ask staff what your pulse is, they will tell you.



If you have a Learning Disability or Autism diagnosis please complete a Health Passport and return it to the Learning Disability and Autism team on: leedsth-tr.l autism@nhs.net



© The Leeds Teaching Hospitals NHS Trust • 2nd edition Ver 1.0

Developed by: Alison Conyers • Lead Professional, Learning Disabilities and Autism. All images / Resources Copyright © LYPFT easyonthei

Produced by: Medical Illustration Services • MID code: 20240102_010/NR

LN004789

Publication date

01/2024

Review date

01/2027