

# Paediatric step by step procedure for a 2 piece stoma bag change

Information for parents and carers



---

leeds children's  
hospital

---

caring about children

Patient sticker

**Name of parents/carers**

.....  
.....  
.....

**Date booklet given**

...../...../.....

***\*This section must always be completed***

## What is a stoma?

The word “stoma” comes from the Greek word meaning “mouth”.

Formation of a stoma includes a surgical procedure to create an opening on the abdomen where the bowel is brought out onto the surface of the skin on the abdomen.

### *The two most common stomas are:*

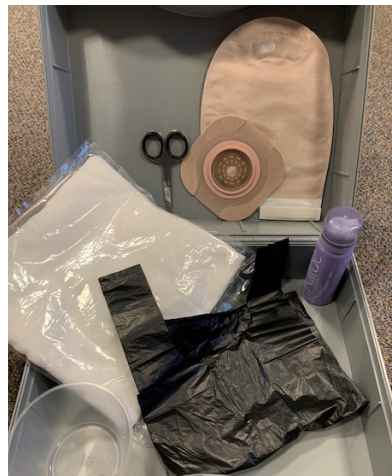
- **Colostomy**; part of the large bowel/colon are brought to the skin level.
- **Ileostomy**; part of the small bowel /ileum are brought to skin level.

Some children can have two openings brought to the skin level. The active (proximal) stoma will produce stool (poo). The non-active (distal) stoma goes down to where the anus should be. This is called a mucus fistula, it may or may not produce mucous.

## Step by step procedure to change a 2 piece stoma bag and baseplate

### *What you will need:*

- Warm tap water and bowl (no soap)
- Dry wipes for washing and drying
- Stoma scissors
- Stoma appliance baseplate and bag (2 piece bag)
- Disposable waste bag
- Adhesive remover spray



## Procedure

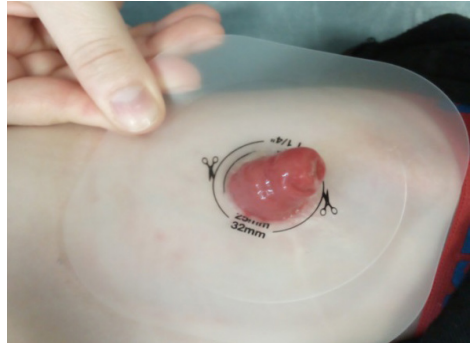
1. Wash your hands correctly using soap and water. Prepare your equipment. Fill bowl with water, get dry wipes out ready for use. Get baseplate and baseplate template with stoma scissors out for use. Get disposable waste bag ready for use.
2. If the patient's stoma bag is full, open the drainable end and empty the contents of the pouch into a disposable waste bag/bowl or stand over a toilet and drain into toilet basin.
3. If there is no drainable end, remove the stoma bag from the baseplate and put it in the disposable waste bag.
4. Begin to remove the stoma bag using the adhesive remover spray to lift the flange off the skin. Place this in the disposable waste bag.



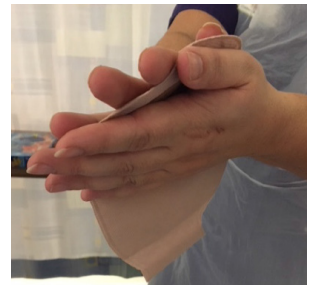
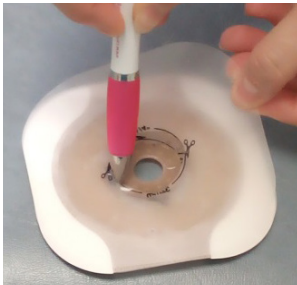
5. Adding warm tap water to the bowl, wet a dry wipe to clean the stoma. Once the stoma and surrounding skin is clean place a dry wipe over the top of stoma to keep it clean. This is a good point to assess the stoma, it should be pink, wet and active.



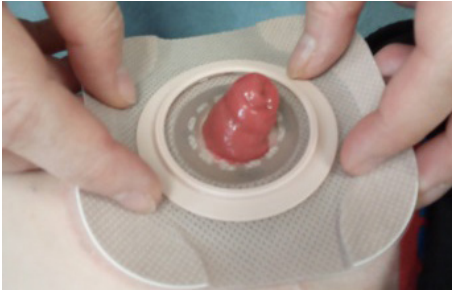
6. Check the size of the stoma using the baseplate from previous change. This helps to ensure you cut the new baseplate to fit snugly around the stoma and adhere to skin. There should be no skin seen around the hole of the template.



7. Place the template over the back of the new baseplate which will be sited and, using a pen draw circle. Cut this out using the curved scissors. Warm the baseplate between your hands to help adherence to abdomen. See below.



8. You are now ready to place the baseplate on the abdomen over the stoma. Start by patting surrounding skin dry. It is important that surrounding skin is dry before applying the new baseplate. Remove clear covering on the back of baseplate. Then place baseplate over stoma onto abdomen. Use your fingers to press the baseplate down around stoma. You can then remove the white strips on the edges of the baseplate. Note, some baseplates do not have these strips. Ensure you smooth the edges down to adhere to the abdomen, as shown below.



9. Place the bag on the baseplate.



10. Ensure the baseplate and bag are secure and if it is a drainable bag, the bottom of the bag is rolled up to prevent leakage as the bag fills with stool.



## Problems you may see with the stoma

- **Retraction/stenosis** This is where the stoma may be flat to abdomen. If it is pink and active this may not be a cause for concern, but please contact your nurse for advice.
- **Prolapse** A prolapse is where the stoma can extend in length. Usually the stoma will return to its normal size and remain pink. If it does not and the stoma becomes dark and discoloured contact your nurse for advice.
- **Bleeding** The bowel has an excellent blood supply. When the bowel is touched i.e. when cleaning the stoma end, a small amount of blood will be seen, this is normal. If blood is seen in the stool or inside the bag please contact your nurse for advice.
- **Sore skin** Check appliance, always cut flush to the stoma leaving all skin protected. The skin is protected by the baseplate of the stoma bag. If stool leaks underneath the baseplate, skin will become sore. Please ensure the stoma appliance is checked to ensure it is fitting correctly around the stoma. Please contact your nurse for advice on suitable products to help skin recover.



## Teaching plan

Skill	Parent / Carer 1	Parent / Carer 2	Key trainer
Parents / Carers have observed changing the stoma bag.			
Parents / Carers can correctly identify equipment necessary to change stoma bag.			
Parents / Carers have removed appliance and cleaned the skin.			
Parents / Carers have cut and applied a new stoma bag with supervision.			
Parents / Carers have performed total stoma care without nursing supervision.			
Parents / Carers have been warned about prolapse, inversion & bleeding.			

## Re-ordering supplies

Your Colorectal nurse will order your first delivery of stoma supplies. You will receive stoma bags, dry wipes, wet wipes, waste bags and any accessory products as necessary. **It is your responsibility to make sure all future orders are placed so you receive the order before you run out of supplies.**

# Discharge

I am using a two piece baseplate and bag

.....  
Please supply ..... baseplate and ..... bags on discharge

Please supply one adhesive remover spray

Please supply a pack of dry wipes

Please supply a pack of disposable bags for waste

Please ensure stoma scissors are in pack on discharge

Additional equipment given

.....  
Stoma box checked to ensure stoma scissors, dry wipes, waste bags, and one adhesive remover spray are in box ready for discharge.

My Children's Community nurse is: .....

Contact Number: .....

Nurses signature ..... Date ...../...../.....

***Inform the Children's Colorectal Nurse of discharge:***

***Tel: 0113 392 6757***





## What did you think of your care?

Scan the QR code or visit [bit.ly/nhsleedsfft](https://bit.ly/nhsleedsfft)

*Your views matter*



© The Leeds Teaching Hospitals NHS Trust • 1st edition (Ver 1)  
Developed by: Liz Heath • Children's Colorectal Nurse Specialist  
Produced by: Medical Illustration Services • MID code: 20250310\_006/NR

LN004749  
Publication date  
03/2025  
Review date  
03/2028