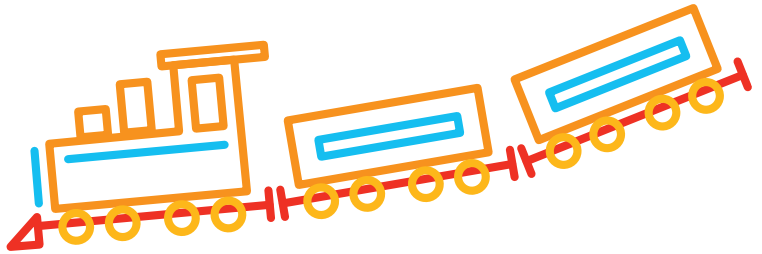


Regional Cleft Lip and Palate Service  
Specialist Speech and Language Therapy

# Information about your child's care

Information for parents and carers



Leeds children's  
hospital

caring about children

Many children born with a cleft palate will develop normal speech, but some children are at a higher risk of developing speech and language difficulties.

As parents, you are very important in encouraging your baby's speech and language development.

This booklet explains how we can work together with you to help your child to develop the best speech possible.



## How is the Cleft Specialist Speech and Language Therapist (SLT) involved with the family of a child born with a cleft palate?

*We will be meeting with you and your child regularly to:*

- monitor your child's speech and language development from an early age;
- provide advice and support about how to encourage your child's early communication skills.

This will help us to find out if any specific help is needed.

## *These appointments will be at the following stages:*

### **During the first year**

- We will see you and your child when you come for your appointments with the Cleft Team.
- We will also see you with your child for a babble play session before or after their palate operation.
- At these appointments, you will have an opportunity to talk about any concerns that you may have and we will provide ideas and activities for helping your child learn to talk.

### **During the second year**

- We will see you with your child at around 18 months of age to assess your child's early speech and language development through play activities.
- We will listen to the sounds and words your child is saying.
- If there are any concerns about your child's speech development, we will continue to monitor this closely and provide support as necessary.

### **From three years**

- We will see you with your child at three years of age.
- At this appointment, we will carry out a detailed assessment of your child's speech and also review their language development.
- If there are any on-going speech and language needs, we will continue to provide support as necessary.
- Following this appointment, your child will also be seen for a check-up with the Cleft Team, where information about your child's speech and language will be shared.

The local SLT service may also become involved in your child's care.

## From five years

- Your child will be seen for a routine check-up with the Cleft Team at five years of age, and this will include an assessment of their speech.
- We will continue to monitor your child's speech when they come for routine appointments with the Cleft Team at 10 and 15 years of age.
- If there are any concerns about your child's speech at any time, we will continue to monitor this closely and provide therapy and support as necessary.

The local SLT service may also continue to be involved in your child's care.

You can contact us at any time if you have any questions or concerns about your child's speech or language development:

## Specialist Speech and Language Therapy Service

### *Regional Cleft Lip and Palate Service*

Leeds General Infirmary, Leeds LS1 3EX

Tel: **0113 392 3786**

Email: **leedsth-tr.cleftslt@nhs.net**

*Additional information about Cleft Lip and Palate is available from:*

### **Cleft Lip and Palate Association (CLAPA)**

332 Goswell Rd, The Angel, London EC1V 7LQ

Phone **020 7833 4883**      Email: **info@clapa.com**

Website: **www.clapa.com**