

Welcome to Bexley Wing Hotel

Information for patients



Leeds Cancer
Centre

Welcome to the Bexley Hotel

Our facility has 20 rooms, offering both twin and single accommodation, family and disabled rooms. You can find us on Level 8 of the Bexley Wing.

For further enquiries or to book a room, please contact the hotel co-ordinator on:



Tel: 0113 206 7687

Facilities

Each room has the following;

- En-suite facilities
- Tea and coffee
- Mini-fridge
- TV with Free-view
- Telephone (for internal calls only)
- Towels
- Hair dryer (on request)

All rooms are serviced daily.

TV, mini-fridge and personal safe



We are a smoke-free trust and as such there is a strict no-smoking policy in the hospital buildings. Smoking outside should be in designated areas, please ask at reception.



Check in any time after 2.00pm.

Check out any time before 10.00am.

Guests are requested to leave their key card in the drop box next to the hotel reception.

Guests are requested to consider other guests and keep noise to a minimum at all times of the day and night.

Lost property

Any lost property will be held within the hotel for seven days, after which items will be handed to Security

Tel. 0113 206 5152

In an emergency

Please note that the hotel does not provide medical or nursing cover. Should you feel unwell please contact your GP for advice. If you need an ambulance please ring **9999** from your room telephone and state your location as Bexley Hotel, Level 8, Bexley Wing, St James's Hospital and your room number.

If you are having your treatment in the Ambulatory Care Unit (ACU) please refer to page six of the leaflet *Having your treatment in the Ambulatory Care Unit (ACU)*, for instructions if you feel unwell.

Maintenance

For all maintenance issues such as heating, water or key-card loss please contact the Hotel reception during office hours (8am - 4pm).

Out of hours (4pm - 8am and weekends) please telephone Equans (who maintain the building) on extension 68482.



Out of hours keys can be collected from J95.

Charges

| | |
|---|-------------------------------|
| Patients | no charge |
| Relatives sharing a room with patients | no charge |
| Relatives and other guests | £35 per room per night |

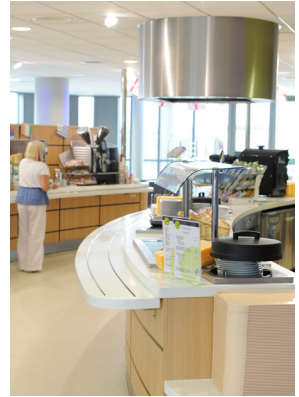
We accept most forms of payment including visa, debit card, cash or cheque. Should you need to make a payment at the weekend you may leave a cheque at reception payable to Bexley Wing Hotel, alternatively the hotel co-ordinator can contact you directly within a few days of your stay.

If there are rooms available we will try to accommodate relatives of patients who are being cared for at the end of life. There is no charge for the room at this time.

Catering facilities

A mini-fridge is available for the use of storing such items as milk etc. Guests are asked to empty this at the end of their stay.

There are no facilities for heating food within the hotel rooms, but there is catering available within the hospital. The Bexley Wing dining room is open during the week but not evenings and weekends. Other facilities are available in Gledhow Wing. Please refer to opening times outside the restaurants.



A comprehensive list of hospital catering outlets and local facilities is available at the hotel reception.

Travel

Car Parking

Car parking is available in the multi-storey car park opposite Bexley wing. This operates on a pay-on-exit system. The hotel is unable to subsidise any parking costs. Please speak to the ward or department caring for you or your relative to discuss if you qualify for help with parking costs. Help and advice is also available from Leeds Cancer Support (see overleaf).

Taxi

A direct line to Amber Cars is available at Bexley Wing main reception.

Bus

There are a number of buses which connect the hospital with the city centre, many offering a frequent service. Most of the buses that stop opposite the Beckett Street entrance on Level -2 will take you into Leeds City Centre.

Leeds Cancer Support

Leeds Cancer Support is here to help you and your family. We aim to offer high quality information, advice and support, to you, your families and friends.



We have a large selection of information leaflets, Macmillan Cancer Support booklets and fact-sheets. We also have visual and audio aids and assisted internet access for patients and visitors. Please come and browse or just drop in for a chat.

The two information lounges are situated on:

Level -2 Radiotherapy Department

Tel: 0113 206 7603 open 8.00am - 6.00pm

Level 1 Westmoreland Outpatients Unit

Tel: 0113 206 8816 open 10.00am 4.00pm

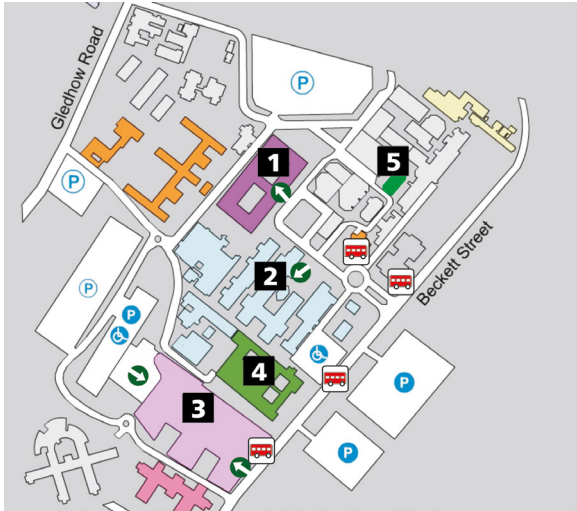
The Sir Robert Ogden Macmillan Centre

The Centre is on the St James's Hospital site and offers a variety of support services including counselling, support groups and complementary therapies. These therapies include Reiki, relaxation and visualisation, hand and foot massage and many others. You can just drop in for a coffee and a chat anytime. Open from 10am - 4pm Monday to Friday. Telephone: **0113 206 6499**.

All the Information Care and Support Services mentioned above can be contacted by email on:

leedsth-tr.Cancersupport@nhs.net

A map of St James's University Hospital site



St James's University Hospital

- 1** Gledhow Wing
- 2** Lincoln Wing
- 3** Bexley Wing
- 4** Chancellors Wing
- 5** Robert Ogden Centre

-  Entrances
-  Visitor parking
-  Disabled parking
-  Staff parking
-  Bus stops



What did you think of your care?

Scan the QR code or visit bit.ly/nhsleedsfft

Your views matter



The printing of this leaflet has been funded thanks to donations and gifts in Wills to Leeds Hospitals Charity
leedshospitalscharity.org.uk



© The Leeds Teaching Hospitals NHS Trust • 4th edition (Ver 1)
Developed by: Sue Chadwick, Matron for Surgical Oncology
Produced by: Medical Illustration Services • MID code: 20220310_001/BP

LN000007
Publication date
11/2023
Review date
11/2026