

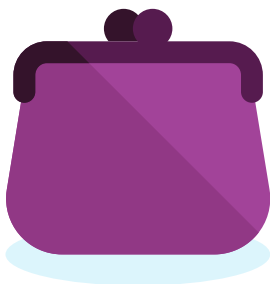
Patient Valuables

Information for patients, carers,
families and friends



This leaflet explains how we work with you to take care of your valuables whilst you are an inpatient and which items we suggest you do / do not bring with you into hospital.

- We strongly advise you not to bring the following into hospital with you - keys, electronic devices, bank cards or jewellery.
- You will only need a small amount of money for refreshments and newspapers. We suggest you bring no more than £10 into hospital which can then be added to if needed by your visitors. (A maximum of £50 can be stored in the ward safe if you are unlikely to have visitors during your stay. Please speak to the ward staff when you are admitted if this is required).
- The Trust accepts no liability for any loss, damage or theft of any property belonging to a patient, except where the property has been deposited with the Trust for safekeeping. You will be asked to sign a disclaimer on admission which describes any valuables you have with you and who will be responsible for them during your stay. It is your responsibility before leaving the hospital to ensure that all property deposited for safekeeping with the Trust is returned in the condition you deposited it and to notify staff if this is not the case as soon as possible after it has been returned to you.



- Please only bring in items which you really need as space is very limited.
- Items deposited with the Trust for safekeeping are kept off the ward areas in our safes. They can only be returned to the patient they belong to, except in exceptional circumstances. They will need to be signed for on return.
- A list of items we suggest you bring with you when admitted is available on the Trust website in the Patients Information section:



www.leadsth.nhs.uk/patients-visitors/patient-and-visitor-information/preparing-to-come-to-hospital/#inpatient

- Please talk to a member of staff at your outpatient's appointment before admission if you have any questions about which belongings are appropriate to bring with you.
- Please mark personal property with your name, where possible, so that it can be easily identified.
- If you are a carer of a patient who has difficulty making decisions, please keep property being left with those you are responsible for to a minimum. For further information please see the information on the carers page of our Trust website:



www.leadsth.nhs.uk/patients-visitors/patient-and-visitor-information/patient-experience/involving-people/information-for-carers/

Use of electronic devices

Please be considerate of fellow patients and visitors when using an electronic device such as a phone, tablet or laptop inside the hospital buildings.

Please silence all notifications and sounds where possible and use headphones when listening to music or streaming content so as to not disturb others.

Unauthorised photography, filming or recording is not permitted on hospital premises. **DO NOT** take any pictures, videos or recordings of staff or other people unless you have their personal consent to do so.

