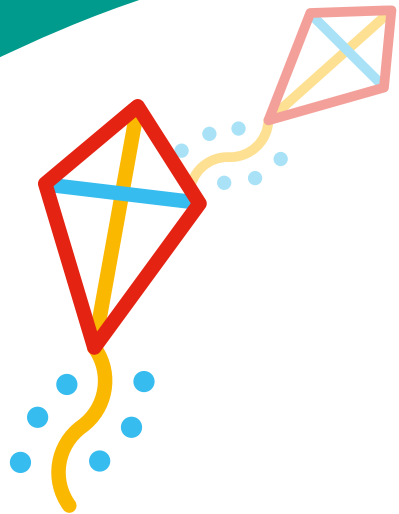


Assembling and cleaning the Pari PEP

Information for
patients and
parents

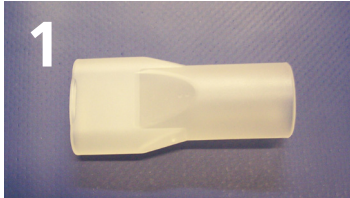


leeds children's
hospital

caring about children

This leaflet explains how to assemble your Pari PEP and how to look after it.

Assembling the Pari PEP



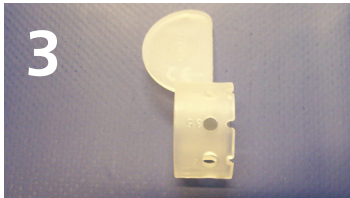
1

Pari PEP mouthpiece



2

Body Section



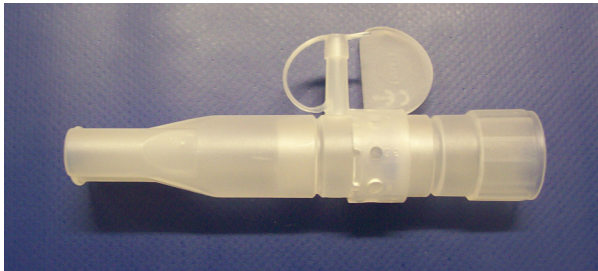
3

Variable hole section



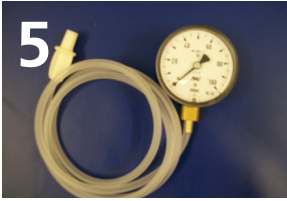
4

End valve section



Completed Pari PEP

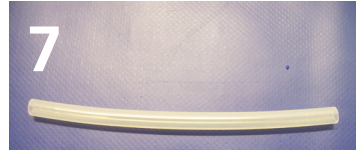
Attaching a pressure gauge



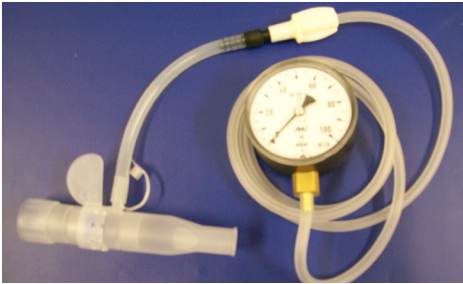
Pressure gauge



Connector



Extension tube



Pari PEP with pressure gauge

Cleaning

Your Pari PEP should be thoroughly cleaned after every time you use it.

1. Clean parts 1-6 in a clean bowl with warm tap water and washing up liquid. Rinse thoroughly with warm running tap water.
2. Dry all the parts with kitchen roll. Leave to become perfectly dry in a clean and warm place.
3. Keep the Pari PEP parts somewhere clean and dry such as a lunchbox. Put the pari PEP back together just before you use it.

Once a week your Pari PEP should be sterilised

Wash your Pari PEP as usual (as in step 1). Then put pieces 1-4 into a pan of water and boil for 10 minutes. **Do not boil parts 5 and 6**

Carefully remove the Pari PEP from the water and dry as above.

Please bring your Pari PEP to clinic each time that you attend so we can check if the settings or equipment needs to be changed.

If you have any questions please contact:

Children's Physiotherapy Team Tel: **0113 392 6361**